

 **Kawasaki**



Catálogo de Partes

PREFACIO

Es nuestro placer presentarles a ustedes el Catálogo de Partes.

Este Catálogo ha sido especialmente diseñado para ayudarle en la selección de las partes correctas con el fin de mantener el vehículo en las mejores condiciones.

Los repuestos originales están sujetos a un exigente estándar de control de calidad, por lo tanto es necesario que usted sólo use repuestos originales.

En nuestro constante esfuerzo para mejorar la eficiencia y desempeño de su vehículo, las especificaciones, diagramas y número de partes pueden cambiar sin previo aviso. Consecuentemente las descripciones de los repuestos en este Catálogo pueden no ser las finales y definitivas.

Las alteraciones y modificaciones que ocurren en la impresión de este Catálogo, serán informadas a nuestra red, a través de circulares de Servicio. Es requisito que usted actualice su Catálogo y haga las correcciones necesarias, una vez reciba dichas circulares. Lo anterior le asegurará un rápido y adecuado despacho de sus partes, pues las órdenes están siendo diligenciadas con las referencias más actualizadas.

En caso de necesitar asistencia técnica, comunicarse con el Distribuidor Autorizado o llamar al Departamento de Servicios Auteco-Kawasaki.

Kawasaki

Let the good times roll.

AH115-A1
For Malaysia Market

Motorcycle

Parts Catalog

'93 AH115-A1 (ML)

CONTENTS

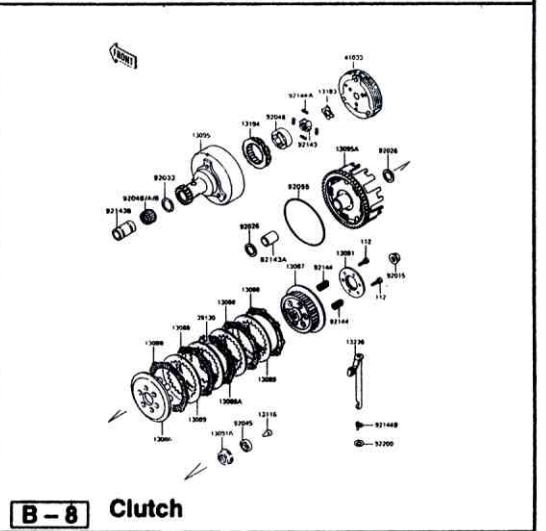
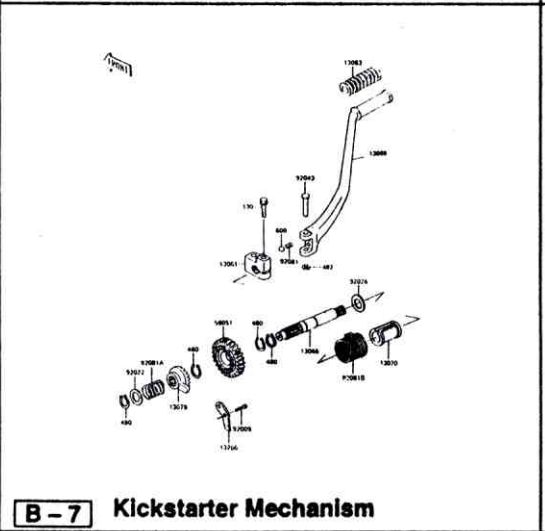
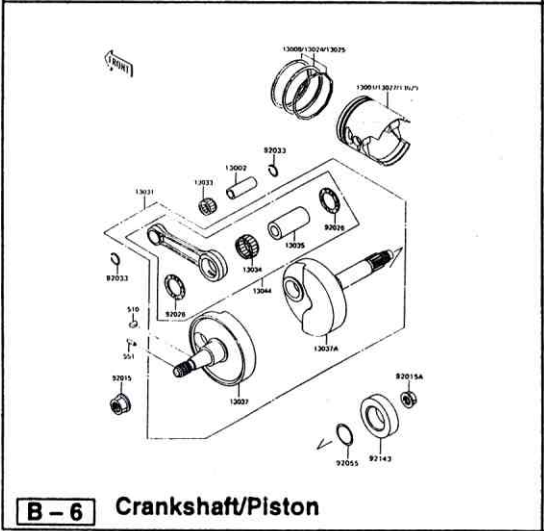
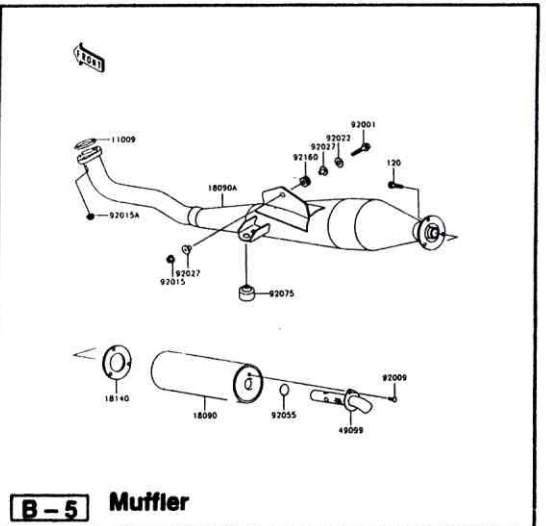
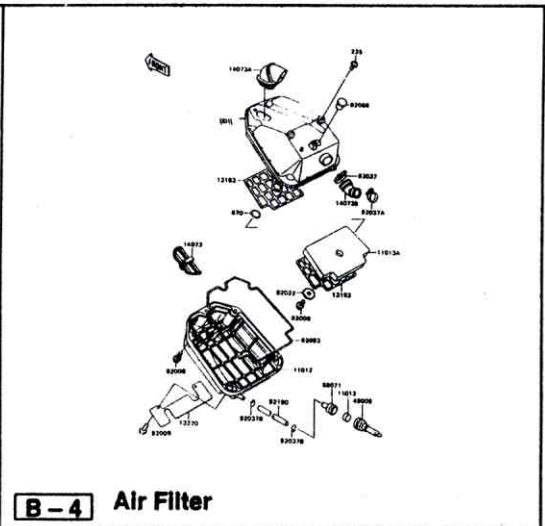
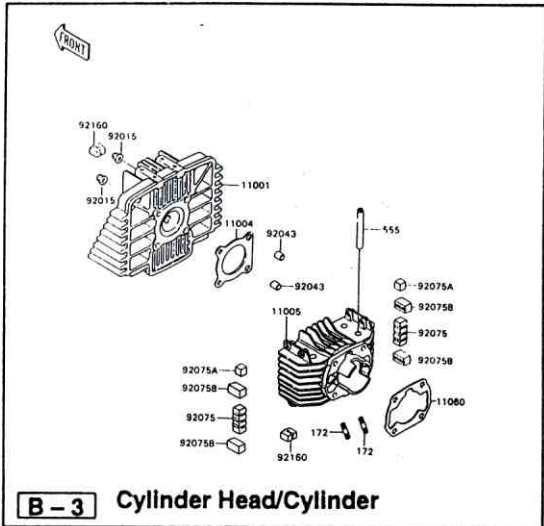
ITEM	DESCRIPTION	PAGE	ITEM	DESCRIPTION	PAGE
1	PICTORIAL INDEX - GRIP NO. B-1	1	31	FENDER	31
2	PICTORIAL INDEX - GRIP NO. B-2	2	32	STAND	32
3	PICTORIAL INDEX - GRIP NO. C-1	3	33	TIRE	33
4	PICTORIAL INDEX - GRIP NO. C-2	4	34	FRONT HUB	34
5	PICTORIAL INDEX - GRIP NO. D-1	5	35	REAR HUB	35
6	PICTORIAL INDEX - GRIP NO. D-2	6	36	BRAKE PEDAL	36
7	PICTORIAL INDEX - GRIP NO. E-1	7	37	FRONT MASTER CYLINDER	37
8	PICTORIAL INDEX - GRIP NO. E-2	8	38	FRONT CALIPER	38
9	PICTORIAL INDEX - GRIP NO. F-1	9	39	HANDLE BAR(1/2)	39
10	PICTORIAL INDEX - GRIP NO. F-2	10	40	HANDLE BAR (2/2)	40
11	CYLINDER HEAD/CYLINDER	11	41	FRONT FORK	41
12	AIR FILTER	12	42	FUEL TANK	42
13	MUFFLER	13	43	OIL TANK	43
14	CRANKSHAFT/PISTON	14	44	SEAT	44
15	KICKSTARTER MECHANISM	15	45	METER	45
16	CLUTCH	16	46	CABLE	46
17	TRANSMISSION	17	47	SIDE COVER/CHAIN CASE	47
18	CHANGE DRUM/SHIFT FORK	18	48	LEG SHIELD	48
19	GEAR CHANGE MECHANISM	19	49	HEAD LAMP	49
20	CRANKCASE	20	50	TAIL LAMP	50
21	ENGINE COVER	21	51	TURN SIGNAL	51
22	CARBURETOR (1/2)	22	52	ELECTRICAL EQUIPMENT	52
23	CARBURETOR (2/2)	23	53	IGNITION SWITCH	53
24	OIL PUMP	24	54	TOOL	54
25	GENERATOR	25	55	LABEL	55
26	IGNITION COIL	26	56	EMBLEM GROUP	56
27	FRAME	27	57	NUMERIC PARTS INDEX L - 14	57
28	FRAME FITTING	28	58	NUMERIC PARTS INDEX L - 15	58
29	SWING ARM/SHOCK ABSORBER	29	59	NUMERIC PARTS INDEX L - 16	59
30	STEP	30	60	NUMERIC PARTS INDEX L - 17	60

This catalog covers:
'93 AH115-A1 Engine

GRID NO.

B - 1

This grid covers:
Pictorial Index

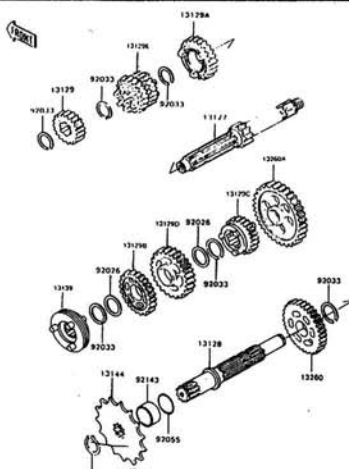


This catalog covers:
'93 AH115-A1 Engine

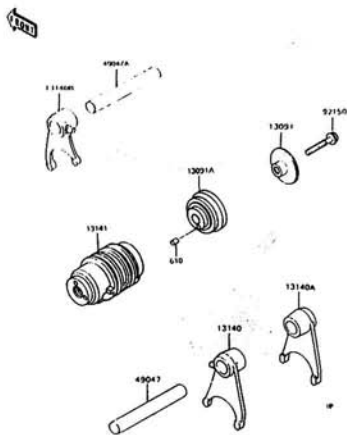
GRID NO.

B-2

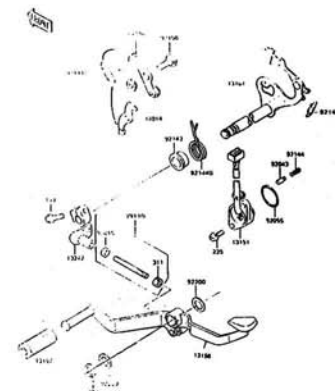
This grid covers:
Pictorial Index



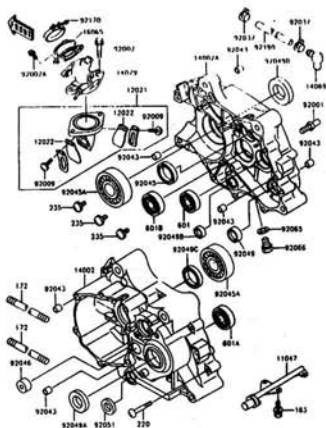
B-9 Transmission



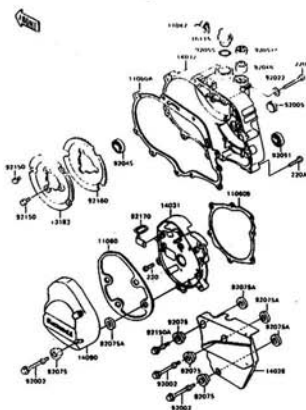
B-10 Change Drum/Shift Fork



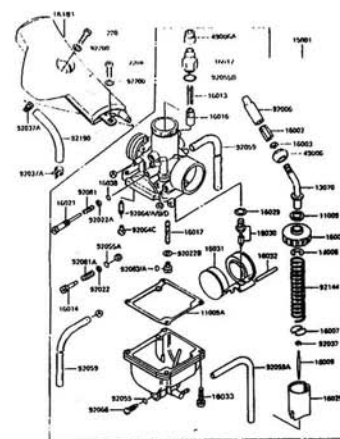
B-11 Gear Change Mechanism



B-12 Crankcase



B-13 Engine Cover



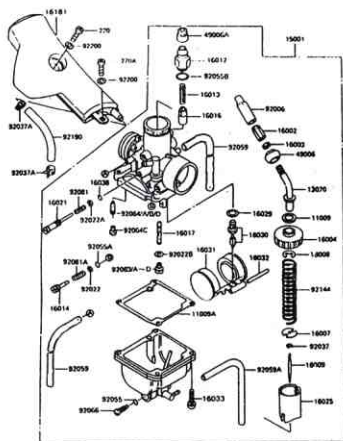
B-14 Carburetor

This catalog covers:
'93 AH115-A1 Engine

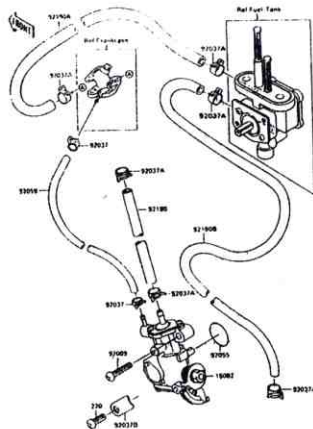
GRID NO.

C-1

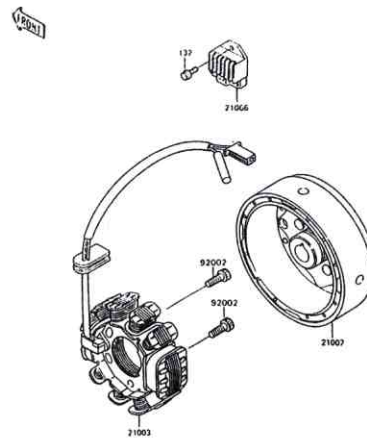
This grid covers:
Pictorial Index



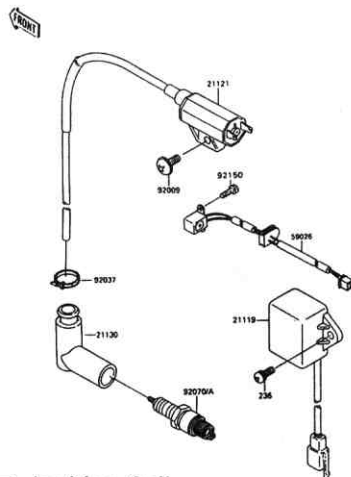
C-3 Carburetor



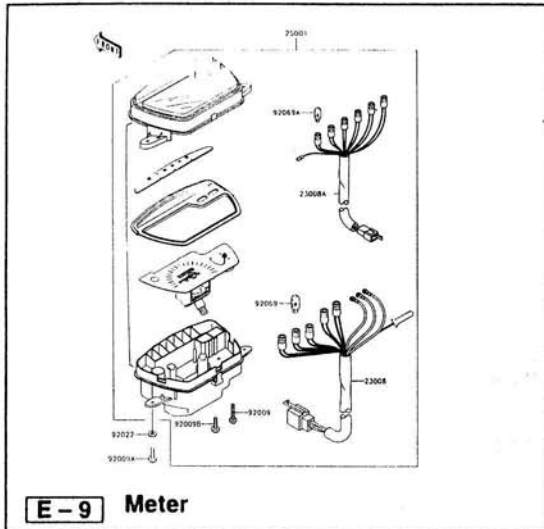
C-4 Oil Pump



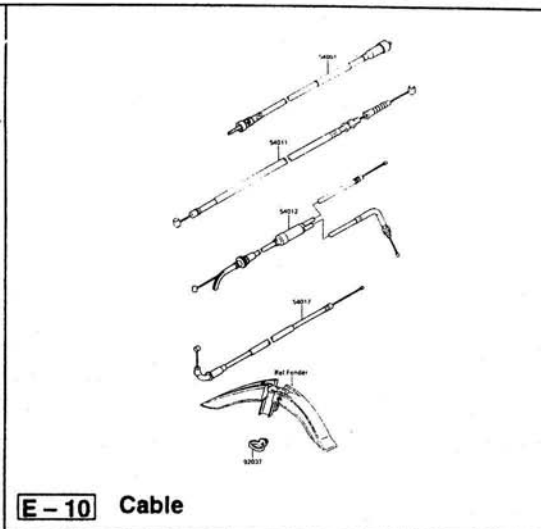
C-5 Generator



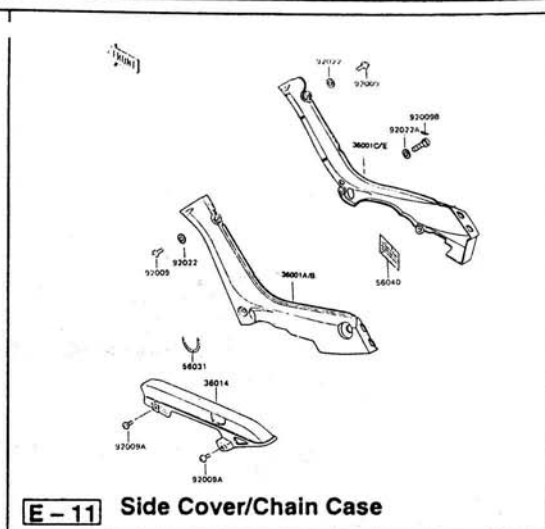
C-6 Ignition Coil



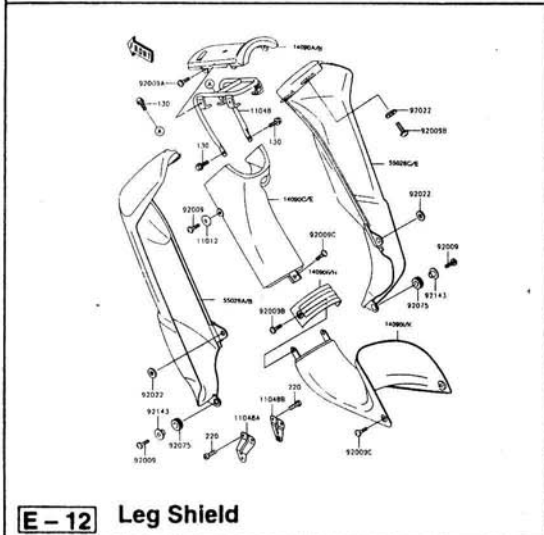
E - 9 Meter



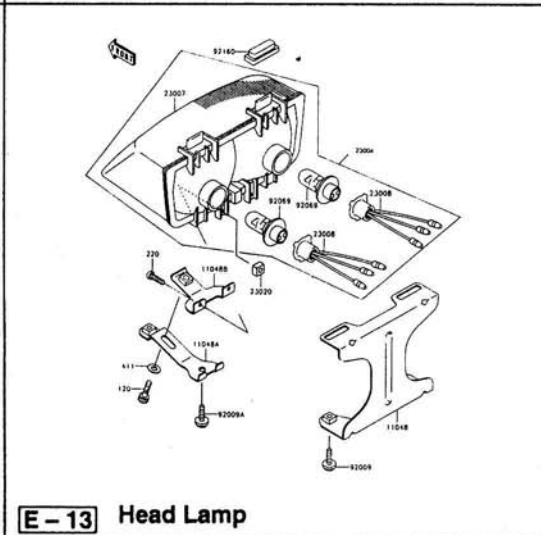
E - 10 Cable



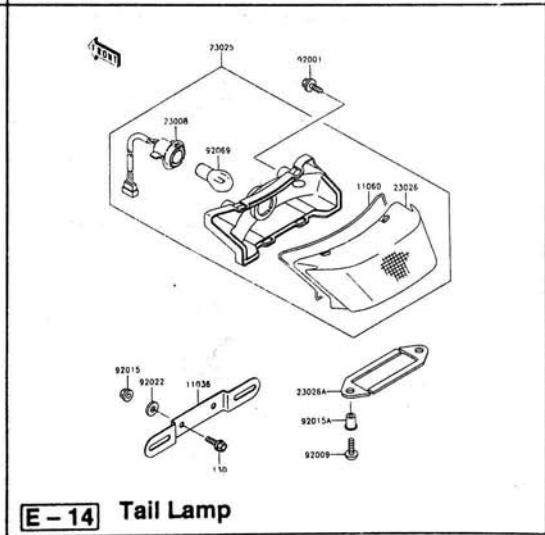
E - 11 Side Cover/Chain Case



E - 12 Leg Shield



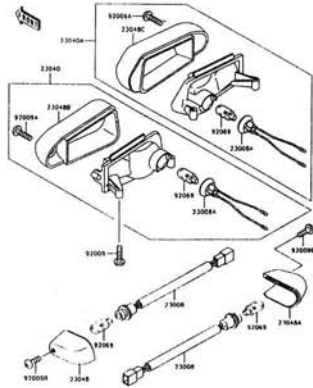
E - 13 Head Lamp



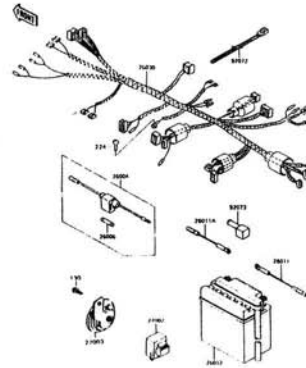
E - 14 Tail Lamp

This catalog covers:
 '93 AH115-A1 Chassis

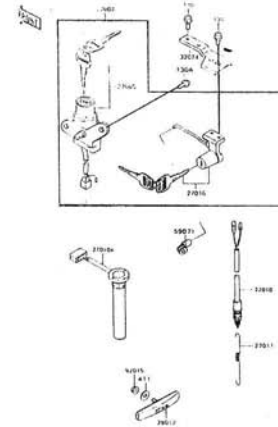
GRID NO.
F-1 This grid covers:
 Pictorial Index



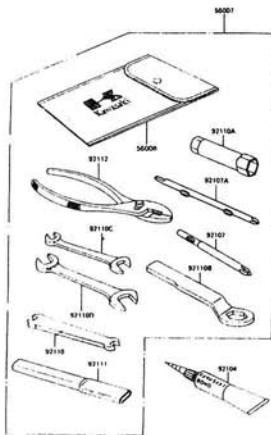
F-3 Turn Signal



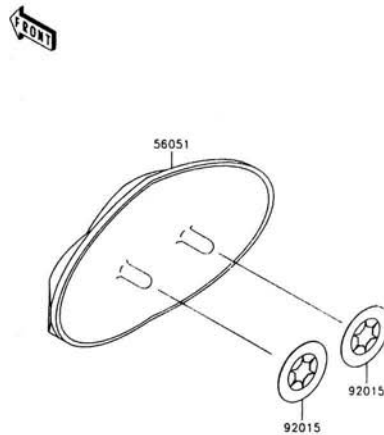
F-4 Electrical Equipment



F-5 Ignition Switch



F-6 Tool



F-7 Label



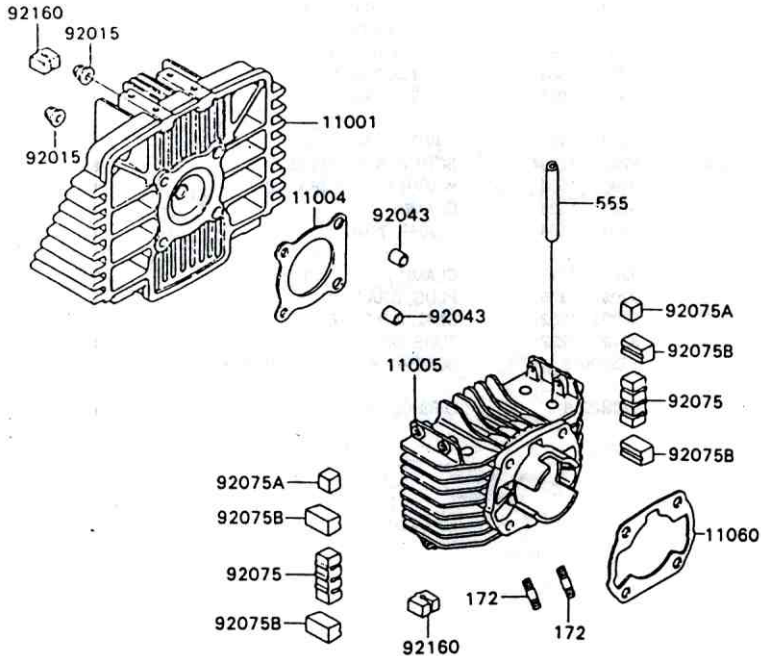
F-8 Emblem Group

This catalog covers:
 '93 AH115-A1 Engine

GRID NO.

B - 3

This grid covers:
 Cylinder Head/Cylinder



Ref. No.	Part No.	Description	Spec Code	Quantity-AH115	
				'93	A1
11001	11001 - 1393	HEAD - CYLINDER		1	
11004	11004 - 1250	GASKET - HEAD		1	
11005	11005 - 1716	CYLINDER - ENGINE		1	
11060	11060 - 1332	GASKET, CYLINDER BASE		1	
555	49035 - 1059	PIN-SPRING		4	
92015	92015 - 1151	NUT, CAP, 8 MM		4	
92043	92043 - 1264	PIN, 8.2 X 10 X 14		2	
92075	92075 - 1268	DAMPER, CYLINDER		2	
92075A	92075 - 1368	DAMPER, CYLINDER HEAD		2	
92075B	92075 - 1673	DAMPER		4	
92160	92160 - 1031	DAMPER		12	
172	172G0822	BOLT-STUD, 8 X 22		2	

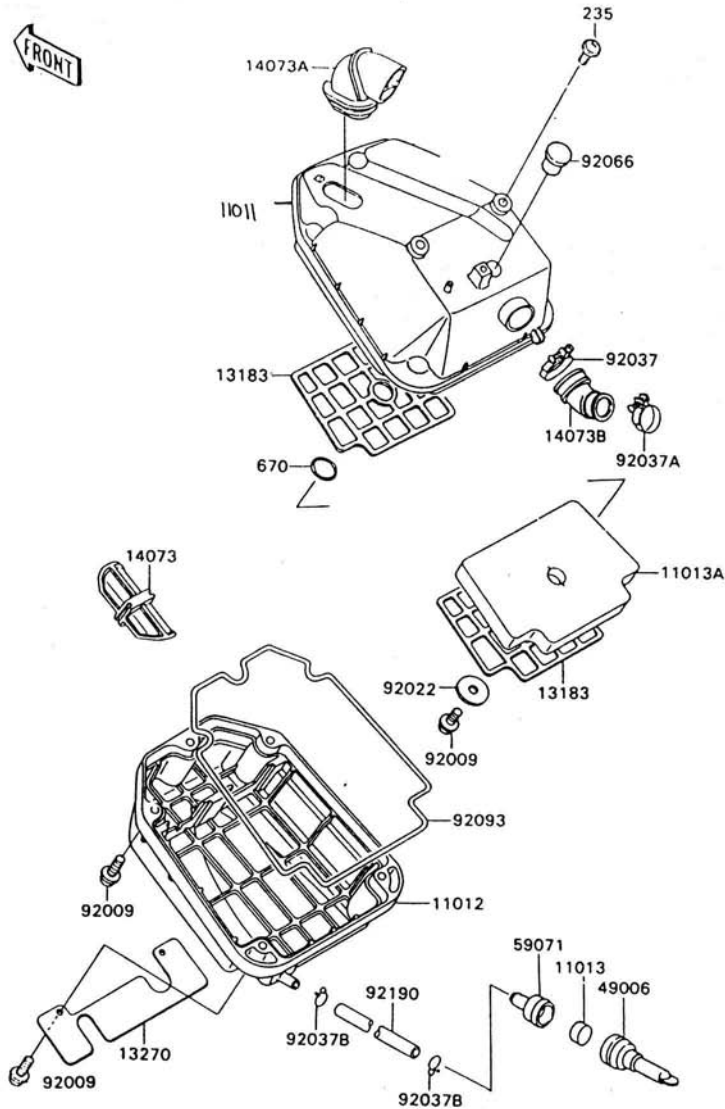
This catalog covers:
 '93 AH115-A1 Engine

GRID NO.

B - 4

This grid covers:
 Air Filter

FRONT



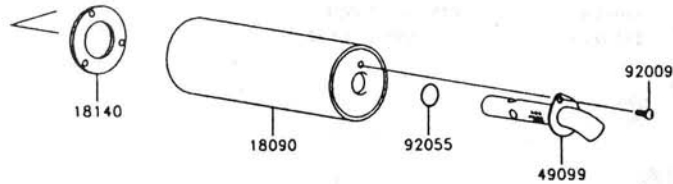
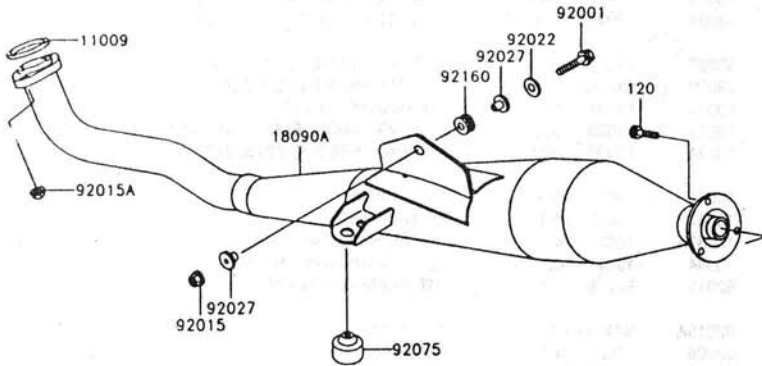
Ref. No.	Part No.	Description	Spec Code	Quantity- AH115	
				'93	A1
11011	11011 - 1404	CASE AIR FILTER		1	
11012	11012 - 1841	CAP, AIR FILTER		1	
11013	11013 - 1159	ELEMENT - AIR FILTER		1	
11013A	11013 - 1213	ELEMENT - AIR FILTER		1	
13183	13183 - 1979	PLATE, ELEMENT		2	
13270	13270 - 1122	PLATE, AIR FILTER		1	
14073	14073 - 1493	DUCT, INSIDE		2	
14073A	14073 - 1495	DUCT, AIR INTAKE		1	
14073B	14073 - 1564	DUCT, AIR FILTER		1	
49006	49006 - 1223	BOOT, DRAIN		1	
59071	59071 - 1127	JOINT, DRAIN		1	
92009	92009 - 1256	SCREW, 6 X 22, BLACK		6	
92022	92022 - 1659	WASHER, 6.2 X 38 X 1.2		1	
92037	92037 - 1326	CLAMP		1	
92037A	92037 - 1568	CLAMP, 39MM		1	
92037B	92037 - 1712	CLAMP		2	
92066	92066 - 1376	PLUG, DRAIN		1	
92093	92093 - 1352	SEAL, AIR FILTER		1	
92190	92190 - 1222	TUBE, DRAIN		1	
235	235C0612	SCREW - PAN - WP - CROS, 6 X 12		2	
670	670B2016	O RING, 16MM		1	

This catalog covers:
 '93 AH115-A1 Engine

GRID NO.

B - 5

This grid covers:
 Muffler



Ref. No.	Part No.	Description	Spec Code	Quantity-AH115	
				'93	A1
11009	11009 - 1992	GASKET, EXHAUST PIPE			1
18090	18090 - 1248	BODY - COMP - MUFFLER			1
18090A	18090 - 1297	BODY - COMP - MUFFLER			1
18140	18140 - 1051	GASKET - MUFFLER			1
49099	49099 - 1486	BAFFLE - PIPE MUFFLER			1
92001	92001 - 1910	BOLT, FLANGED, 8 X 35			1
92009	92009 - 1403	SCREW			1
92015	92015 - 1143	NUT, 8 MM			1
92015A	92015 - 1183	NUT, FLANGED, 8 MM, BLACK			2
92022	92022 - 1317	WASHER, 8.5 X 20 X 1.6, BLACK			1
92027	92027 - 1653	COLLAR, FLANGED, 8.8 X 10.6			2
92055	92055 - 1325	RING - O, 18.8 X 2.4			1
92075	92075 - 015	DAMPER			1
92160	92160 - 1116	DAMPER			1
120	120S0616	BOLT - SOCKET, 6 X 16, BLACK			3

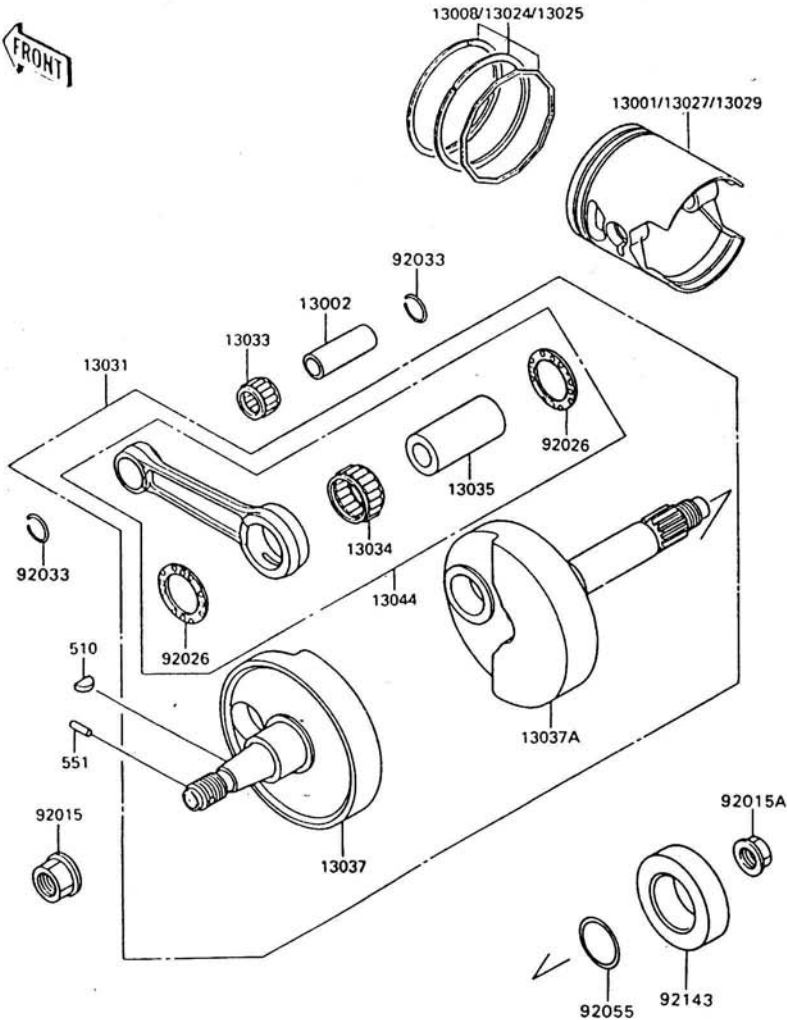
This catalog covers:
 '93 AH115-A1 Engine

GRID NO.

B - 6

This grid covers:
 Crankshaft/Piston

FRONT



Ref. No.	Part No.	Description	Spec Code	Quantity - AH115		
				'93	A1	
13001	13001 - 1418	PISTON - ENGINE, STD		1		
13002	13002 - 1018	PIN - PISTON		1		
13008	13008 - 1150	RING - SET - PISTON, STD		1		
13024	13024 - 1094	RING - SET - PISTON LL. O/S 1.00		1		
13025	13025 - 1118	RING - SET - PISTON L. O/S 0.50		1		
13027	13027 - 1172	PISTON - ENGINE LL. O/S 1.00		1		
13029	13029 - 1219	PISTON - ENGINE L. O/S 0.50		1		
13031	13031 - 1358	CRANKSHAFT - COMP		1		
13033	13033 - 1053	BEARING - SMALL END, 14R1818AP - 1		1		
13034	13034 - 1023	BEARING - NEEDLE, 22VS2814E		1		
13035	13035 - 1068	PIN - CRANK		1		
13037	13037 - 1466	CRANKSHAFT, LH		1		
13037A	13037 - 1472	CRANKSHAFT, RH		1		
13044	13044 - 5085	SET - CONNECTING ROD		1		
92015	92015 - 1712	NUT, FLANGED, 14 MM		1		
92015A	92015 - 1908	NUT, M 14		1		
92026	92026 - 1430	SPACER		2		
92033	92033 - 1050	RING - SNAP		2		
92055	92055 - 022	RING - O, 17.5 X 1.5		1		
92143	92143 - 1665	COLLAR		1		
510	510A3200	KEY - WOODRUFF		1		
551	551A0312	PIN-DOWEL, 3 X 12		1		

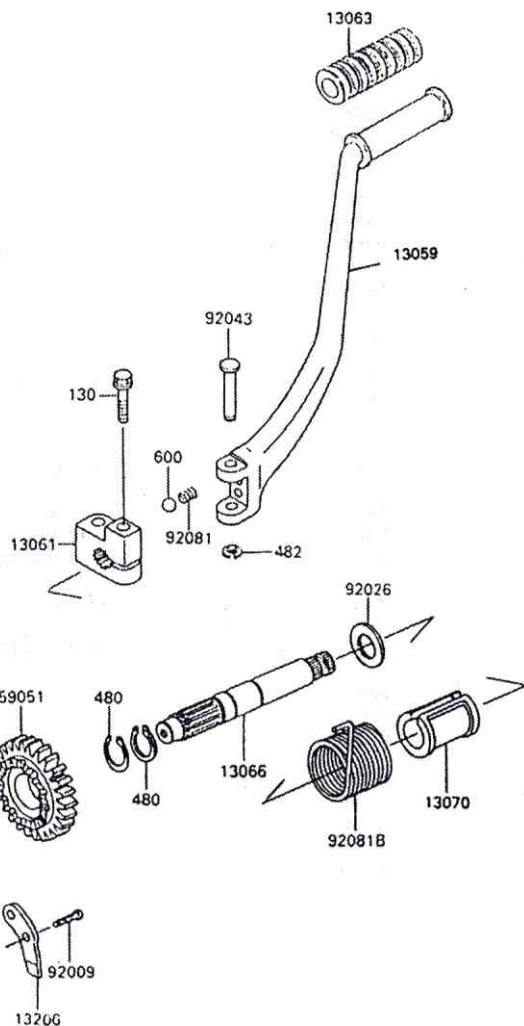
This catalog covers:
'93 AH115-A1 Engine

GRID NO.

B - 7

This grid covers:
Kickstarter Mechanism

FRONT



Ref. No.	Part No.	Description	Spec Code	Quantity-AH115	
				'93	A1
13059	13059 - 1151	LEVER KICK		1	
13061	13061 - 1422	BOSS, KICK PEDAL		1	
13063	13063 - 002	DAMPER, PEDAL		1	
13066	13066 - 1070	SHAFT - KICK		1	
13070	13070 - 1035	GUIDE, KICK SHAFT		1	
13078	13078 - 1057	RATCHET		1	
13206	13206 - 1058	GUIDE - KICK		1	
59051	59051 - 1267	GEAR - SPUR, KICK		1	
92009	92009 - 1104	SCREW, TAPPING		2	
92022	92022 - 315	WASHER, 16.8 X 22 X 0.5		1	
92026	92026 - 1411	SPACER, 16 X 30 X 1.0		1	
92043	92043 - 1109	PIN, 6 X 35.3		1	
92081	92081 - 020	SPRING, KICK PEDAL		2	
92081A	92081 - 122	SPRING, RATCHET		1	
92081B	92081 - 1276	SPRING, KICK STARTER		1	
130	130P0630	BOLT - FLANGED, 6 X 30		1	
480	480J1600	CIRCLIP - TYPE - C, 16 MM		4	
482	482L5000	CIRCLIP - TYPE - E, 5 MM		1	
600	600A0800	BALL - STEEL, 1/4"		2	

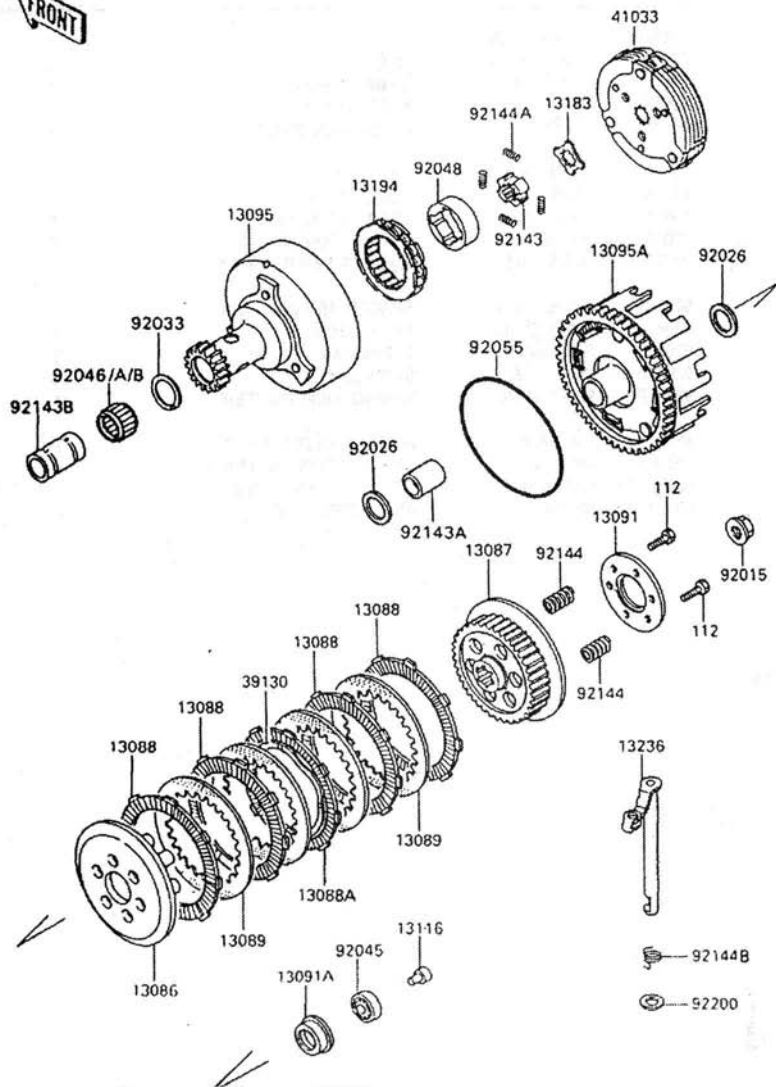
This catalog covers:
 '93 AH115-A1 Engine

GRID NO.

B - 8

This grid covers:
 Clutch

FRONT



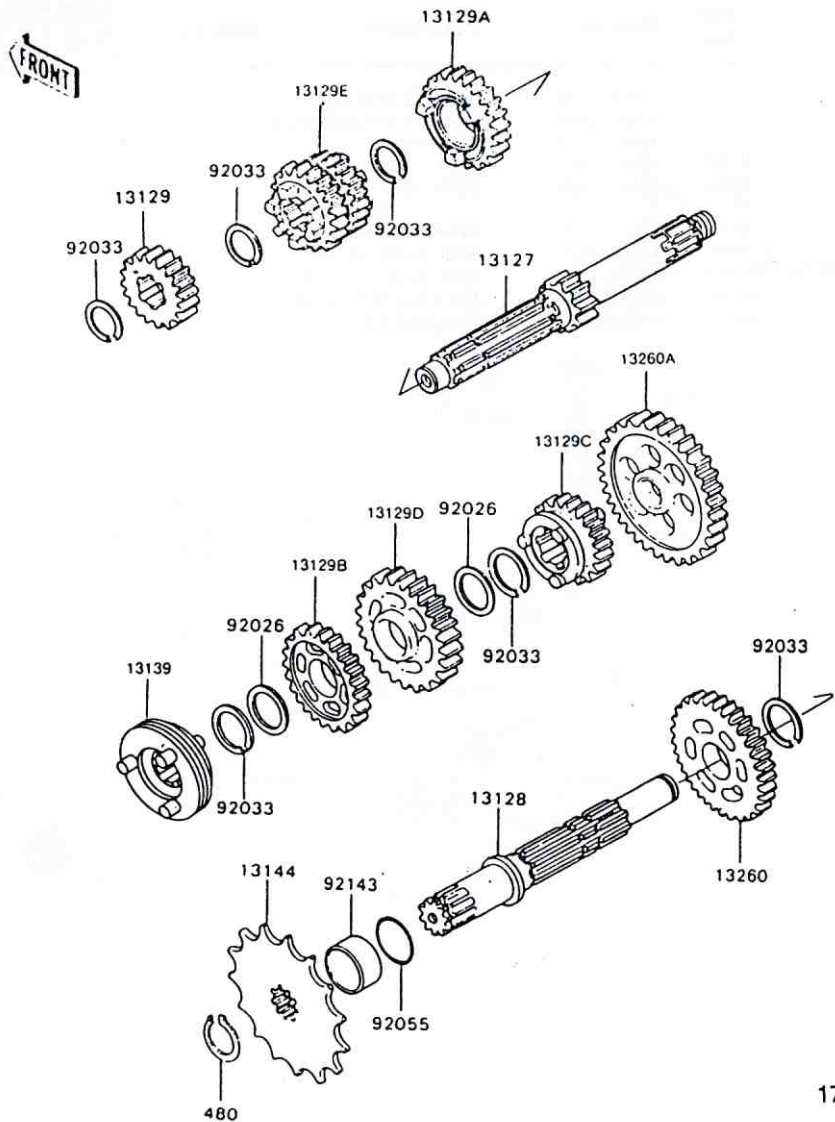
Ref. No.	Part No.	Description	Spec Code	Quantity- AH115	
				'93	A1
13086	13086 - 1065	WHEEL - CLUTCH		1	
13081	13081 - 1453	HUB - ASSY			
13087	13087 - 1151	HUB - CLUTCH		1	
13088	13088 - 1093	PLATE - FRICTION		4	
13088A	13088 - 1096	PLATE - FRICTION		1	
13089	13089 - 1009	PLATE - CLUTCH, STEEL		4	
13091	13091 - 1782	HOLDER, CLUTCH		1	
13091A	13091 - 1787	HOLDER		1	
13095	13095 - 1282	HOUSING - COMP - CLUTCH		1	
13095A	13095 - 1283	HOUSING - COMP - CLUTCH		1	
13116	13116 - 1136	ROD - PUSH		1	
13183	13183 - 1480	PLATE		1	
13194	13194 - 1092	CLUTCH - ONEWAY		1	
13236	13236 - 1249	LEVER - COMP, CLUTCH RELEASE		1	
39130	39130 - 1070	SPRING LEAF, CLUTCH		1	
41033	41033 - 1980	HUB - ASSY, CLUTCH		1	
92015	92015 - 1908	NUT, M14		1	
92026	92026 - 1415	SPACER, 17.3 X 30 X 2.0		1	
92033	92033 - 1240	RING SNAP		1	
92045	92045 - 1123	BEARING - BALL, #628		1	
92046	92046 - 1223	BEARING - NEEDLE, BLUE		1	
92046A	92046 - 1224 (OPTION)	BEARING - NEEDLE, RED		1	
92046B	92046 - 1225 (OPTION)	BEARING - NEEDLE, WHITE		1	
92048	92048 - 1074	RACE		1	
92055	92055 - 1525	RING - O, 81.6 X 3.5		1	
92143	92143 - 1661	COLLAR		1	
92143A	92143 - 1663	COLLAR		1	
92143B	92143 - 1666	COLLAR		1	
92144	92144 - 1482	SPRING		6	
92144A	92144 - 1556	SPRING		4	
92144B	92144 - 1705	SPRING		1	
92200	92200 - 1186	WASHER, 13 X 24 X 0.6		1	
112	112G0520	BOLT - UPSET		6	

This catalog covers:
'93 AH115-A1 Engine

GRID NO.

B - 9

This grid covers:
Transmission



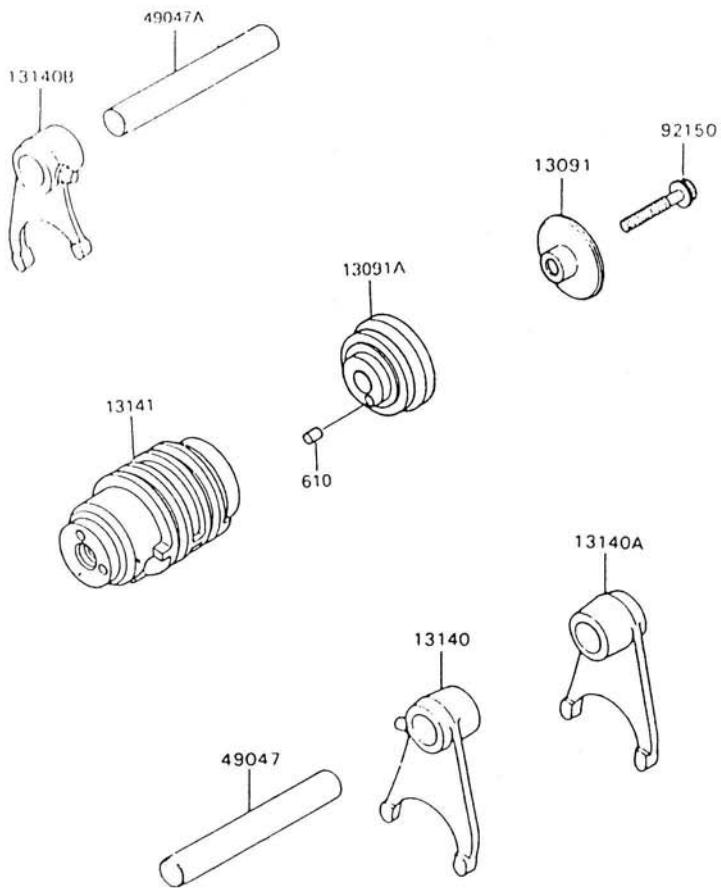
Ref. No.	Part No.	Description	Spec Code	Quantity-AH115		
				'93		
13127	13127 - 1231	SHAFT - TRANSMISSION INPUT, 13T				1
13128	13128 - 1191	SHAFT - TRANSMISSION OUTPUT				1
13129	13129 - 1244	GEAR, INPUT 2ND, 18T				1
13129A	13129 - 1246	GEAR, INPUT 5TH, 27T				1
13129B	13129 - 1251	GEAR, OUTPUT 4TH, 31T				1
13129C	13129 - 1252	GEAR, OUTPUT 5TH, 29T				1
13129D	13129 - 1338	GEAR, OUTPUT 3RD, 34T				1
13129E	13129 - 1958	GEAR, INPUT 3RD & 4TH, 25T & 22T				1
13139	13139 - 1066	SHIFTER				1
13144	13144 - 1186	SPROCKET- OUTPUT, 14T				1
13260	13260 - 1309	GEAR - OUTPUT 2ND, 38T				1
13260A	13260 - 1322	GEAR - OUTPUT LOW, 44T				1
92026	92026 - 1037	SPACER, 17.2 X 23 X 0.5				2
92033	92033 - 1060	RING - SNAP, 17MM				6
92055	92055 - 1235	RING - O, 16.8 MM				1
92143	92143 - 1193	COLLAR				1
480	480J1700	CIRCLIP - TYPE - C, 17 MM				1

This catalog covers:
 '93 AH115-A1 Engine

GRID NO.

B - 10

This grid covers:
 Change Drum/Shift Fork

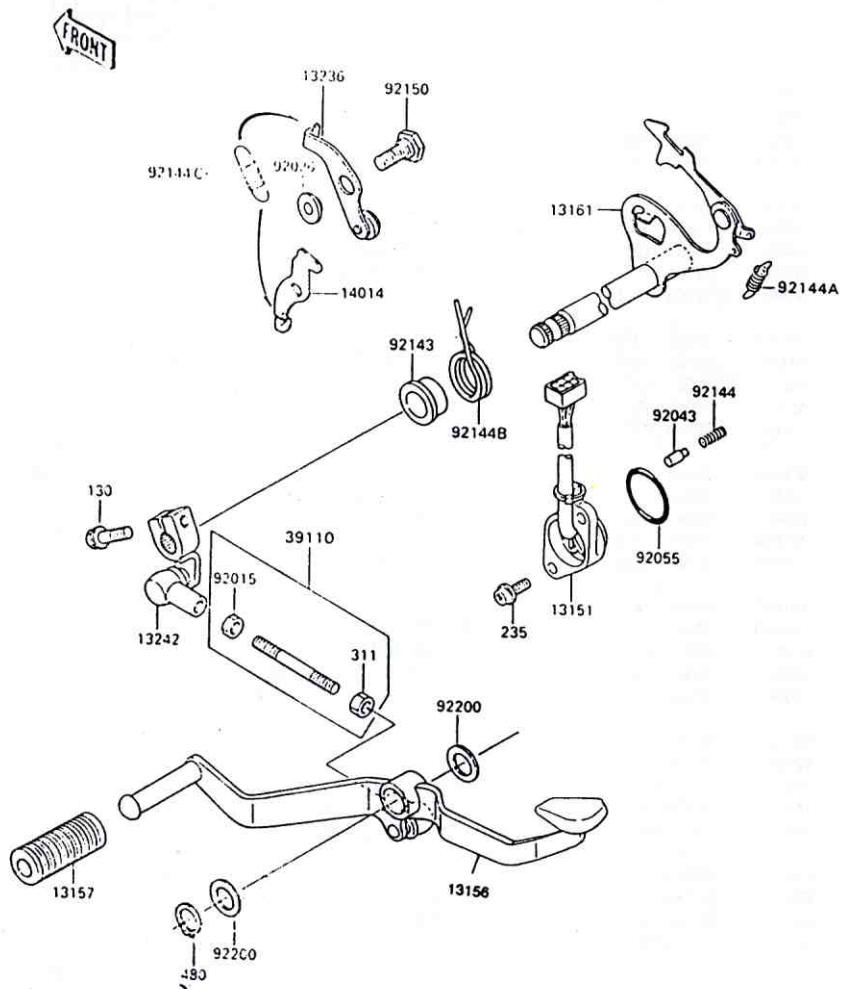


Ref. No.	Part No.	Description	Spec Code	Quantity- AH115		
				'93		
				A1		
13091	13091 - 1710	HOLDER, CHANGE		1		
13091A	13091 - 1803	HOLDER, CHANGE DRUM		1		
13140	13140 - 1109	FORK - SHIFT		1		
13140A	13140 - 1110	FORK - SHIFT		1		
13140B	13140 - 1193	FORK - SHIFT		1		
13141	13141 - 1179	DRUM - CHANGE		1		
49047	49047 - 1009	ROD - SHIFT, 10 X 90		1		
49047A	49047 - 1058	ROD - SHIFT		1		
92150	92150 - 1433	BOLT, SOCKET, 6 X 30		1		
610	610A0406	ROLLER, 4 X 6		1		

This catalog covers:
 '93 AH115-A1 Engine

GRID NO.
B - 11

This grid covers:
 Gear Change Mechanism



Ref. No.	Part No.	Description	Spec Code	Quantity-AH115	
				'93	A1
13151	13151 - 1076	SWITCH - COMP, NEUTRAL		1	
13156	13156 - 1349	LEVER CHANGE		1	
13157	13157 - 004	DAMPER, CHANGE PEDAL		1	
13161	13161 - 1195	LEVER - COMP - CHANGE SHAFT		1	
13236	13236 - 1241	LEVER - COMP, NEUTRAL POSITION		1	
13242	13242 - 1309	LEVER - ASSY - CHANGE, LINK		1	
14014	14014 - 1115	PLATE - POSITION		1	
39110	39110 - 1107	ROD - ASSY - TIE		1	
92015	92015 - 1125	NUT		1	
92026	92026 - 1217	SPACER		1	
92043	92043 - 1385	PIN		1	
92055	92055 - 091	RING - O		1	
92143	92143 - 1298	COLLAR		1	
92144	92144 - 1245	SPRING		1	
92144A	92144 - 1339	SPRING		1	
92144B	92144 - 1371	SPRING		1	
92144C	92144 - 1590	SPRING		1	
92015	92015 - 1626	BOLT, 6 X 14		1	
92200	92200 - 1114	WASHER, 18.3 X 28 X1.0		2	
130	130S0620	BOLT - FLANGED, 6 X 20, BLACK		1	
235	235B0514	SCREW - PAN - WP - CROS		2	
311	311G0600	NUT -HEX, 6 MM		1	
480	480J1800	CIRCLIP - TYPE - C, 18 MM		1	

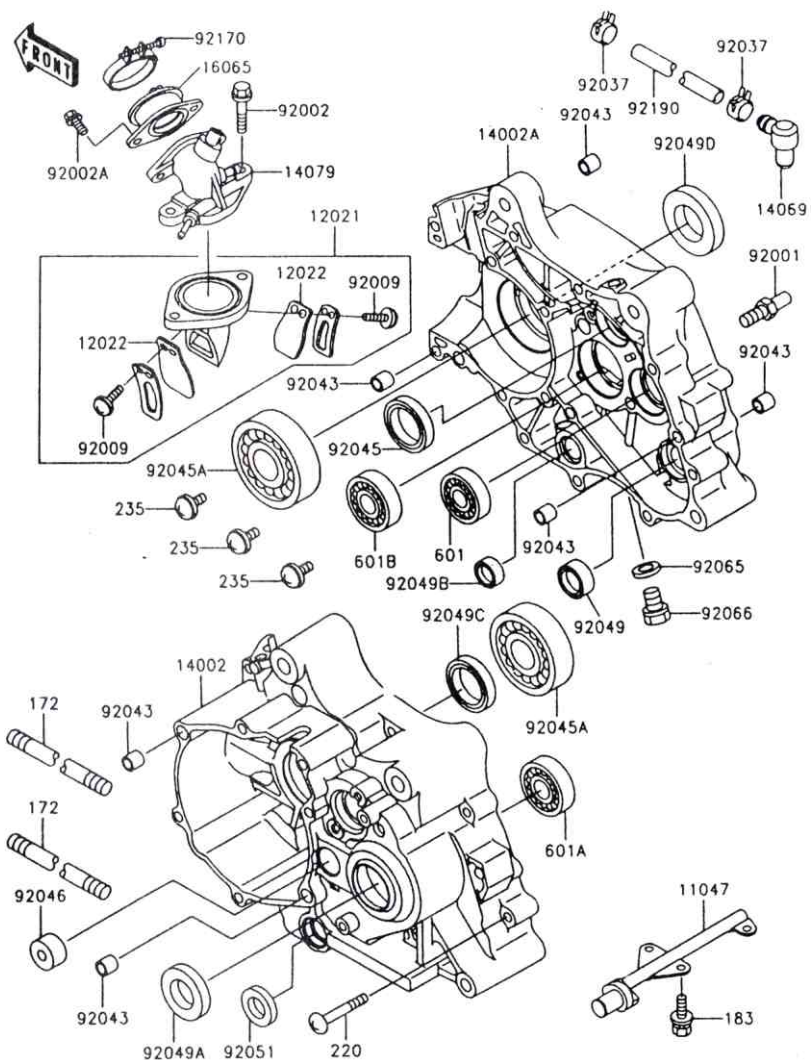
This catalog covers:
 '93 AH115-A1 Engine

GRID NO.

B - 12

This grid covers:

Crankcase



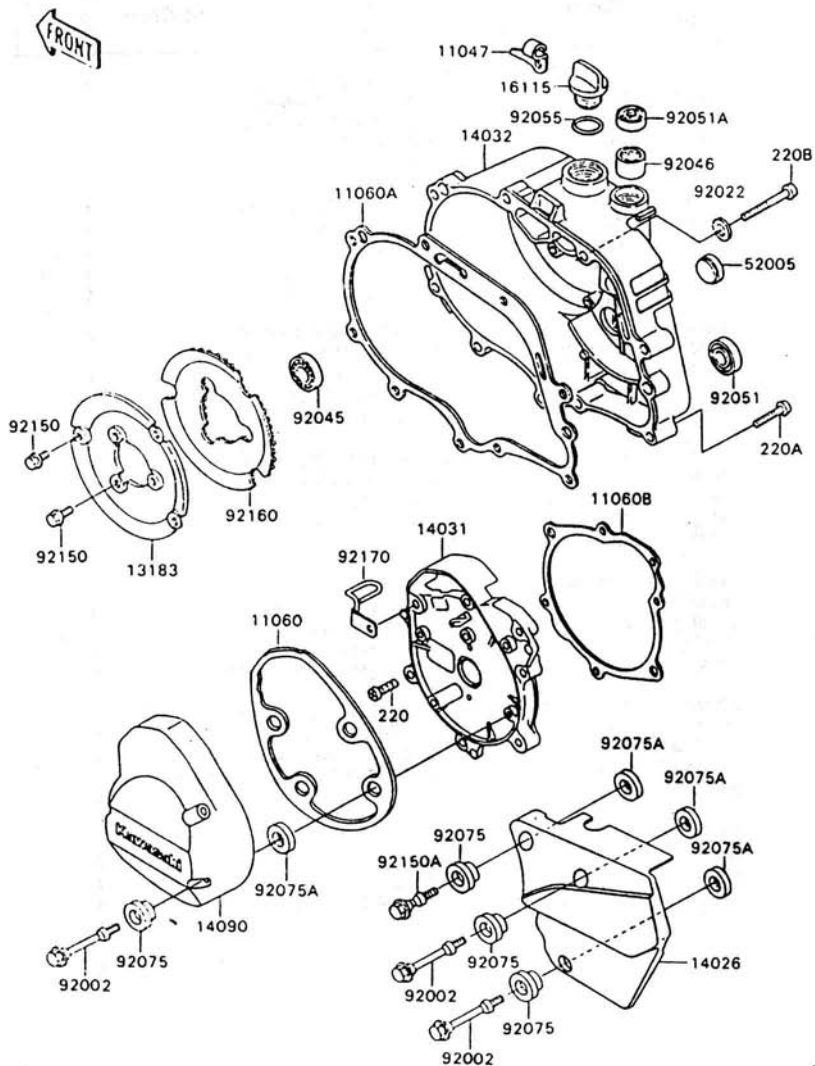
Ref. No.	Part No.	Description	Spec Code	Quantity - AH115	
				'93	A1
11047	11047 - 1764	BRACKET		1	
12021	12021 - 1096	VALVE - ASSY - REED		1	
12022	12022 - 1070	VALVE - REED		2	
14002	14002 - 1626	CRANKCASE, LH		1	
14002A	14002 - 1627	CRANKCASE, RH		1	
14069	14069 - 003	BREATHER		1	
14079	14079 - 1095	HOLDER - ASSY, CARBURETOR		1	
16065	16065 - 1250	HOLDER - CARBURETOR		1	
92001	92001 - 1455	BOLT, RETURN SPRING		1	
92002	92002 - 1105	BOLT, 6 X 28		2	
92002A	92002 - 1570	BOLT, 6 X 16		2	
92009	92009 - 1014	SCREW, REED VALVE		4	
92037	92037 - 1601	CLAMP		2	
92043	92043 - 1263	PIN, 6.2 X 8 X 14		6	
92045	92045 - 1171	BEARING - BALL, 6804		1	
92045A	92045 - 1293	BEARING - BALL		2	
92046	92046 - 1034	BEARING - NEEDLE, BK 1312 NTN		1	
92049	92049 - 002	SEAL - OIL, SB16244		1	
92049A	92049 - 1048	SEAL - OIL, SC22325		1	
92049B	92049 - 1398	SEAL - OIL, VB13193		1	
92049C	92049 - 1410	SEAL - OIL		1	
92049D	92049 - 1417	SEAL - OIL, TCJ32446		1	
92051	92051 - 005	SEAL - OIL, TB13225.5		1	
92065	92065 - 058	GASKET, 10.5 X 16 X 1, DRAIN PLUG		1	
92066	92066 - 1370	PLUG		1	
92170	92170 - 1215	CLAMP		1	
92190	92190 - 1223	TUBE, 6 X 9 X 410		1	
172	172G08120	BOLT - STUD, 8 X 120		4	
183	183B0818	BOLT - UPSET - WS - SMALL		3	
220	220B0635	SCREW - PAN - CROSS, 6 X 35		13	
235	235B0510	SCREW - PAN - WP - CROS		3	
601	601A6201	BEARING - BALL		1	
601A	601A6203	BEARING - BALL, #6203		1	
601B	601A6203U	BEARING - BALL, #6203U		1	

This catalog covers:
 '93 AH115-A1 Engine

GRID NO.

B - 13

This grid covers:
 Engine Cover



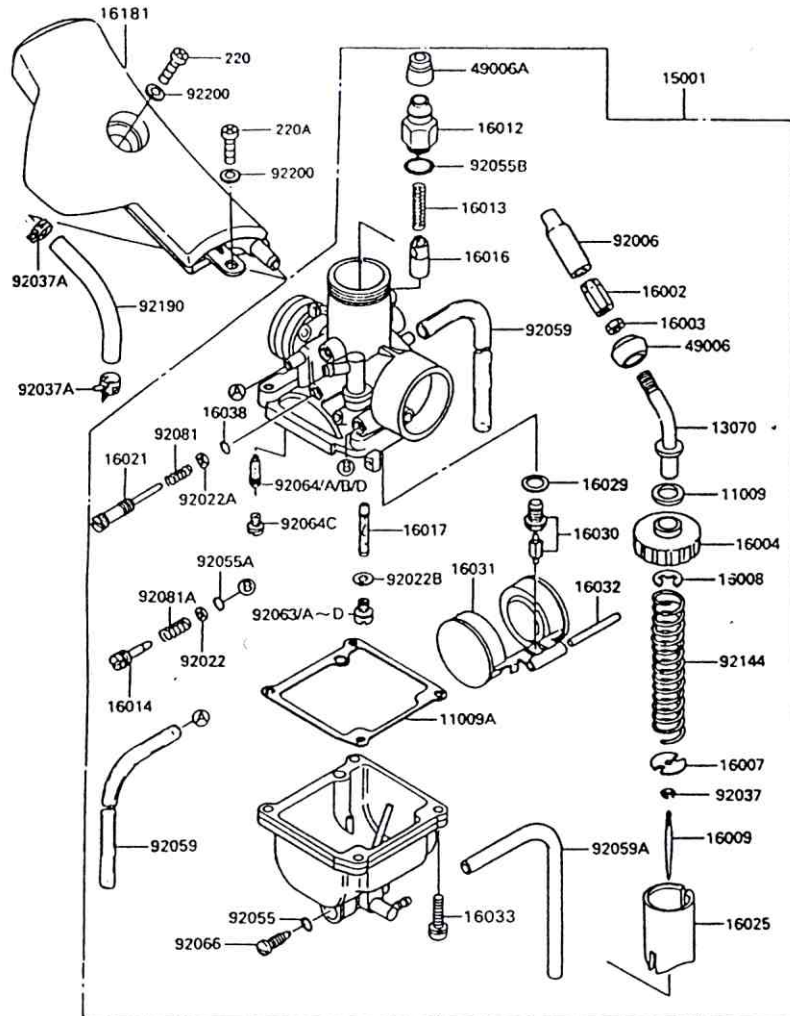
Ref. No.	Part No.	Description	Spec Code	Quantity-AH115	
				'93	A1
11047	11047 - 1988	BRACKET, CLUTCH CABLE		1	
11060	11060 - 1334	GASKET, PUMP COVER		1	
11060A	11060 - 1344	GASKET, CLUTCH COVER		1	
11060B	11060 - 1345	GASKET, GENERATOR COVER		1	
13183	13183 - 1728	PLATE		1	
14026	14026 - 1187	COVER - CHAIN		1	
14031	14031 - 1281	COVER - GENERATOR		1	
14032	14032 - 1341	COVER - CLUTCH		1	
14090	14090 - 1306	COVER PUMP		1	
16115	16115 - 1053	CAP - OIL FILLER		1	
52005	52005 - 1005	GAUGE, OIL LEVEL		1	
92002	92002 - 1815	BOLT		6	
92022	92022 - 304	WASHER, 6.2 X 11 X 1		1	
92045	92045 - 1294	BEARING - BALL, 6001RUSH2		1	
92046	92046 - 1148	BEARING - NEEDLE, HK 1312		1	
92051	92051 - 003	SEAL - OIL, TB16267		1	
92051A	92051 - 005	SEAL - OIL, TB13225.5		1	
92055	92055 - 012	RING - O		1	
92075	92075 - 1855	DAMPER		7	
92075A	92075 - 1856	DAMPER		7	
92150	92150 - 1406	BOLT, 5 X 8		6	
92150A	92150 - 1665	BOLT		1	
92160	92160 - 1312	DAMPER		1	
92170	92170 - 1361	CLAMP		1	
220	220B0625	SCREW - PAN - CROS, 6 X 25		5	
220A	220B0635	SCREW - PAN - CROS, 6 X 35		10	
220B	220B0660	SCREW - PAN - CROS, 6 X 60		1	

This catalog covers:
 '93 AH115-A1 Engine

GRID NO.

B - 14

This grid covers:
 Carburetor (1/2)



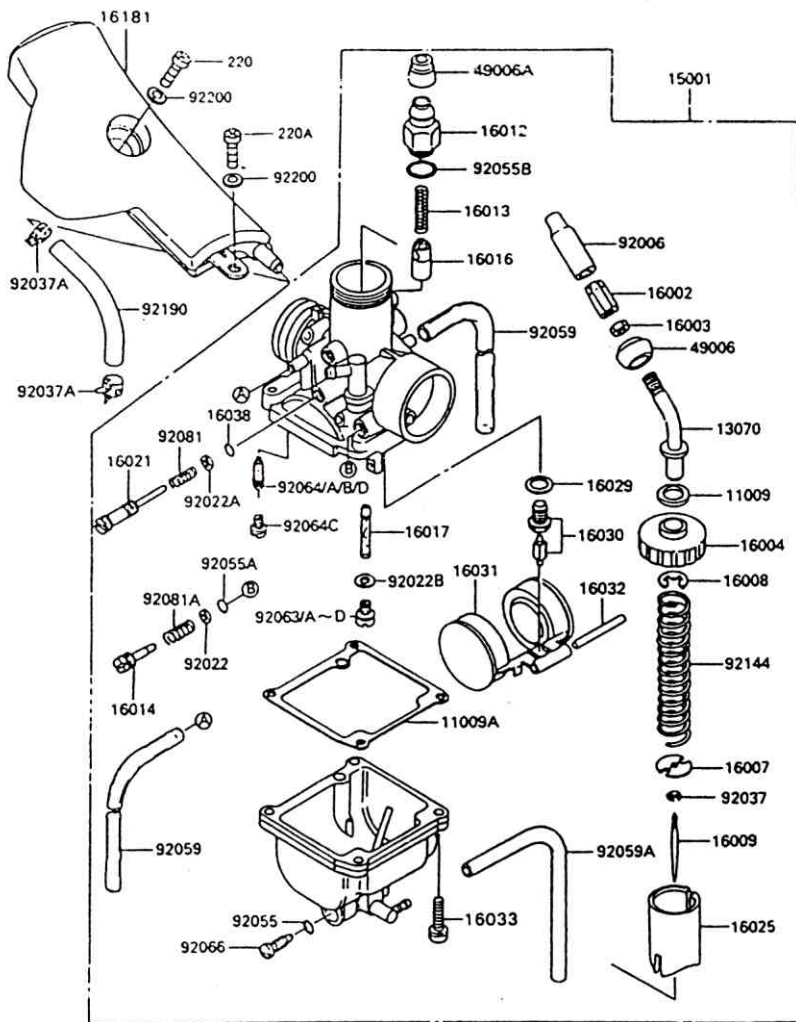
Ref. No.	Part No.	Description	Spec Code	Quantity- AH115		
				'93	A1	
11009	11009 - 1074	GASKET, CABLE GUIDE		1		
11009A	11009 - 1250	GASKET, FLOAT CHAMBER		1		
13070	13070 - 1068	GUIDE, THROTTLE CABLE		1		
15001	15001 - 1888	CARBURETOR - ASSY		1		
16002	16002 - 004	ADJUSTER - CABLE		1		
16003	16003 - 004	NUT, CABLE ADJUST LOCK		1		
16004	16004 - 1062	CAP - CHAMBER, MIXING		1		
16007	16007 - 1044	SEAT - SPRING		1		
16008	16008 - 011	CLAMP, CABLE GUIDE		1		
16009	16009 - 1641	NEEDLE - JET, 3DV01		1		
16012	16012 - 1058	CAP - STARTER PLUNGER		1		
16013	16013 - 005	SPRING, STARTER PLUNGER		1		
16014	16014 - 1060	SCREW - PILOT AIR		1		
16016	16016 - 002	PLUNGER, STARTER		1		
16017	16017 - 1357	JET - NEEDLE, E - 2		1		
16021	16021 - 1126	SCREW - THROTTLE STOP		1		
16025	16025 - 1192	VALVE - THROTTLE, CA 2.0		1		
16029	16029 - 002	GASKET, FLOAT VALVE SEAT		1		
16030	16030 - 1065	VALVE - FLOAT, #1.5		1		
16031	16031 - 1068	FLOAT		1		
16032	16032 - 003	PIN, FLOAT		1		
16033	16033 - 009	SCREW, FLOAT CHAMBER		4		
16038	16038 - 022	GASKET, "O" RING		1		
16181	16181 - 1066	TANK - RESONATOR		1		
49006	49006 - 1083	BOOT, MIXING CHAMBER CAP		1		
49006A	49006 - 1203	BOOT, STARTER PLUNGER		1		
92006	92006 - 1084	STUD, CABLE ADJUSTER		1		
92022	92022 - 1187	WASHER, ADJUST SCREW		1		
92022A	92022 - 1698	WASHER, THROTTLE STOP SCREW		1		
92022B	92022 - 1938	WASHER		1		
92037	92037 - 1272	CLAMP		1		
92037A	92037 - 1678	CLAMP		2		
92055	92055 - 044	RING - O		1		
92055A	92055 - 1078	RING - O, ADJUST SCREW		1		
92055B	92055 - 1417	RING - O, PLUNGER		1		
92059	92059 - 1395	TUBE, 3 X 5 X 160		2		
92059A	92059 - 1429	TUBE, 3 X 5 X 250		1		

This catalog covers:
'93 AH115-A1 Engine

GRID NO.

C - 3

This grid covers:
Carburetor (2/2)



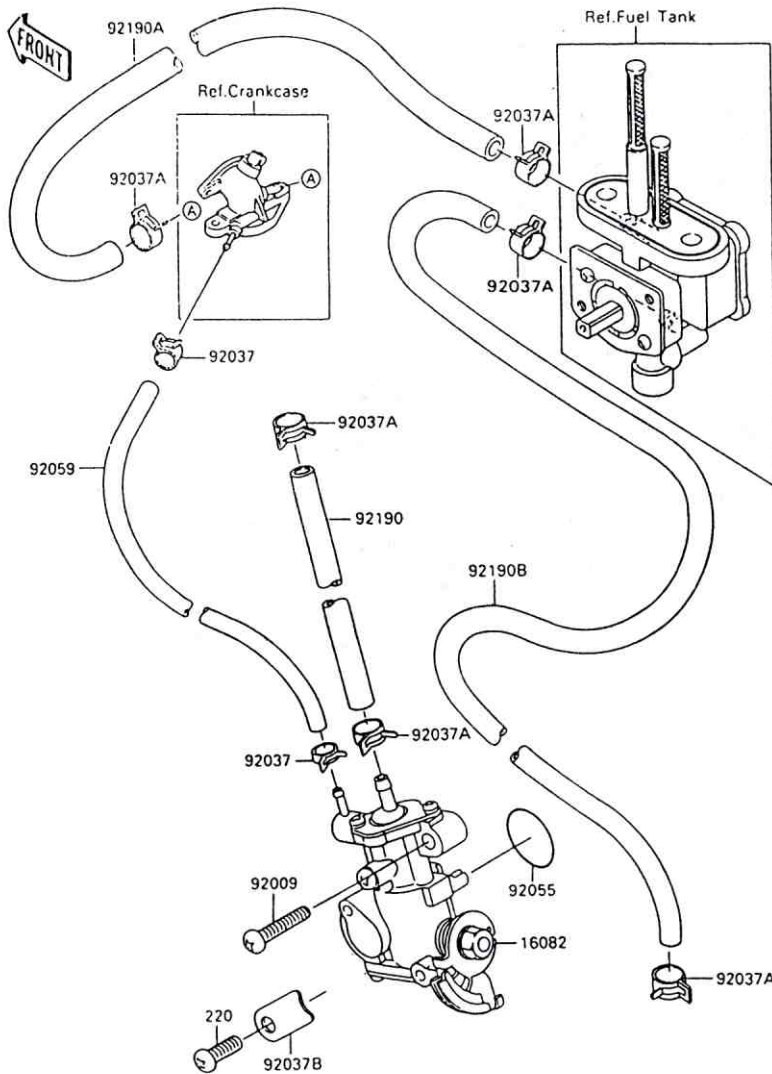
Ref. No.	Part No.	Description	Spec Code	Quantity-AH115	
				'93	A1
92063	92063 - 1035 (RACING USE ONLY)	JET - MAIN, #97.5R		1	
92063A	92063 - 068	JET - MAIN, #92.5R		1	
92063B	93063 - 1031 (RACING USE ONLY)	JET - MAIN, #95R		1	
92063C	92063 - 094 (RACING USE ONLY)	JET - MAIN, #87.5R		1	
92063D	92063 - 1029 (RACING USE ONLY)	JET - MAIN, #90R		1	
92064	92064 - 1018 (RACING USE ONLY)	JET-PILOT, #15		1	
92064A	92064 - 020 (RACING USE ONLY)	JET - PILOT, #17.5		1	
92064B	92064 - 021	JET - PILOT, #20		1	
92064C	92064 - 032 (RACING USE ONLY)	JET - PILOT, #25		1	
92064D	92064 - 040 (RACING USE ONLY)	JET - PILOT, #22.5		1	
92066	92066 - 1064	PLUG, DRAIN		1	
92081	92081 - 1153	SPRING, STOP SCREW		2	
92144	92144 - 1271	SPRING, THROTTLE VALVE		1	
92190	92190 - 1392	TUBE		1	
92200	92200 - 1172	WASHER		2	
220	220C0614	SCREW - PAN - CROS, 6 X 14, BLACK		1	
220A	220C0616	SCREW - PAN - CROS, 6 X 16, BLACK		1	

This catalog covers:
 '93 AH115-A1 Engine

GRID NO.

C - 4

This grid covers:
 Oil Pump



Ref. No.	Part No.	Description	Spec Code	Quantity- AH115			
				'93			
16082	16082 - 1133	PUMP - ASSY - OIL					1
92009	92009 - 1522	SCREW, 5 X 20					1
92037	92037 - 1260	CLAMP, TUBE					2
92037A	92037 - 1601	CLAMP					6
92037B	92037 - 187	CLAMP					1
92055	92055 - 055	RING - O, 19.5 X 1.5					1
92059	92059 - 1904	TUBE, 3 X 6 X 140					1
92190	92190 - 1224	TUBE, 4.5 X 9.5 X 750					1
92190A	92190 - 1225	TUBE, 4.5 X 9.5 X 385					1
92190B	92190 - 1393	TUBE, 5 X 9 X 390					1
220	220B0612	SCREW - PAN - CROS, 6 X 12					1

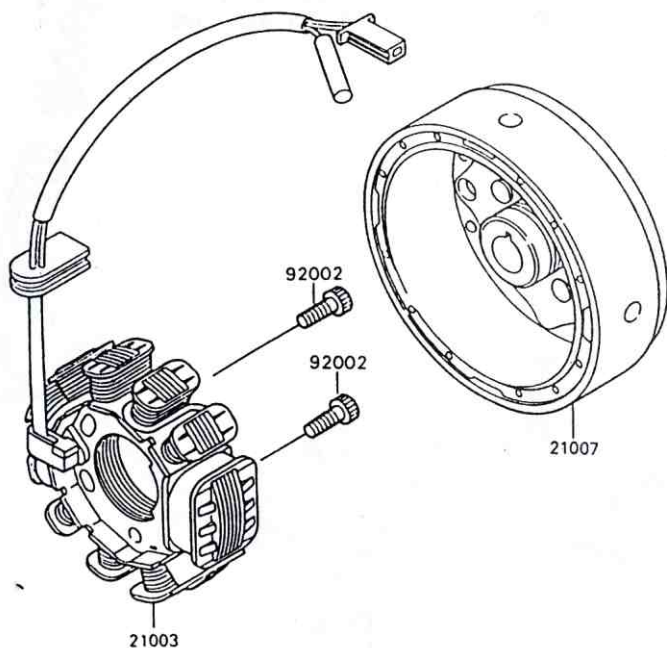
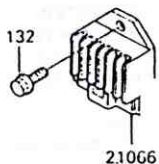
This catalog covers:
 '93 AH115-A1 Engine

GRID NO.

C - 5

This grid covers:
 Generator

FRONT



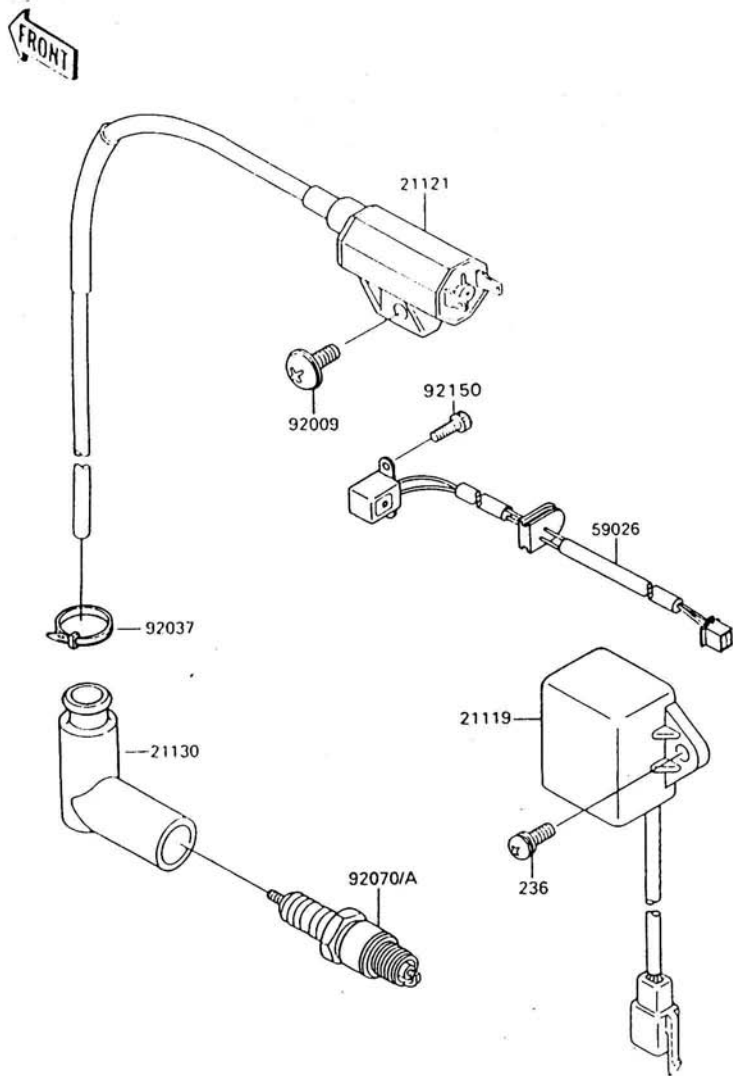
Ref. No.	Part No.	Description	Spec Code	Quantity-AH115			
				'93			
21003	21003 - 1250	STATOR					1
21007	21007 - 1253	ROTOR, MAGNETO					1
21066	21066 - 1086	REGULATOR - VOLTAGE					1
92002	92002 - 1778	BOLT, SOCKET, 6 X 16					2
132	132G0614	BOLT - FLANGED - SMALL					1

This catalog covers:
 '93 AH115-A1 Engine

GRID NO.

C - 6

This grid covers:
 Ignition Coil



Ref. No.	Part No.	Description	Spec Code	Quantity - AH115		
				'93	A1	
21119	21119 - 1360	IGNITER		1		
21121	21121 - 1229	COIL - IGNITION		1		
21130	21130 - 1062	CAP - SPARK PLUG		1		
59026	59026 - 1123	COIL - PULSING		1		
92009	92009 - 1694	SCREW, 6 X 16		1		
92037	92037 - 1173	CLAMP		1		
92070	92070 - 1202	PLUG - SPARK, BP7HS(NGK)		1		
92070A	92070 - 1203 (OPTION)	PLUG - SPARK, W22FP-U (NO)		1		
92150	92150 - 1180	BOLT, SOCKET, 5 X 14		2		
236	236D0616	SCREW - PAN - WSP - CROS		1		

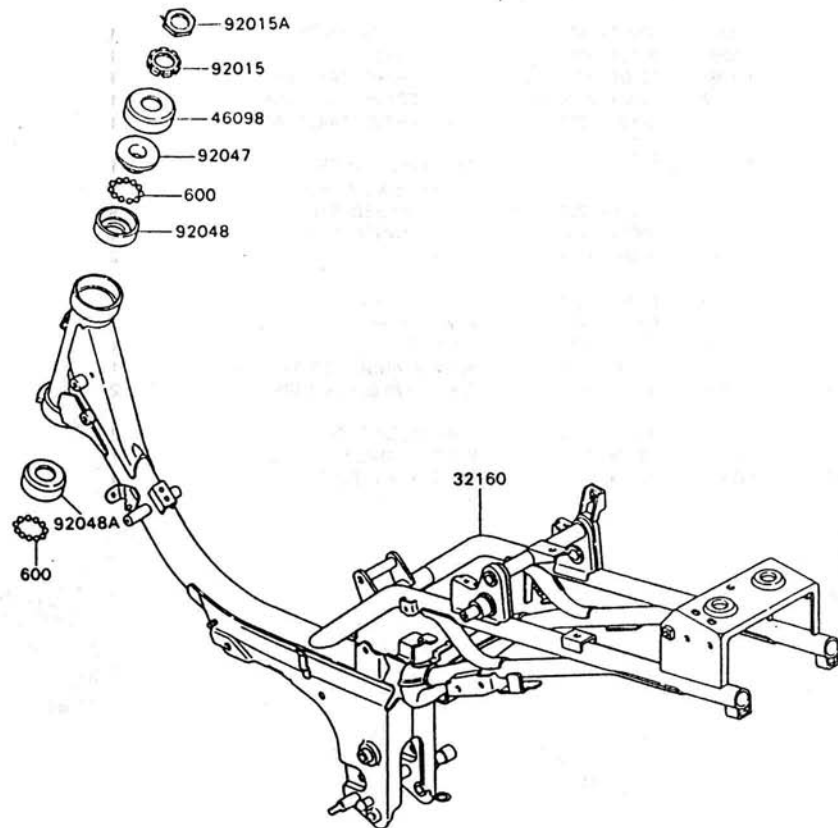
This catalog covers:
 '93 AH115-A1 Chassis

GRID NO.

D - 3

This grid covers:
 Frame

FRONT



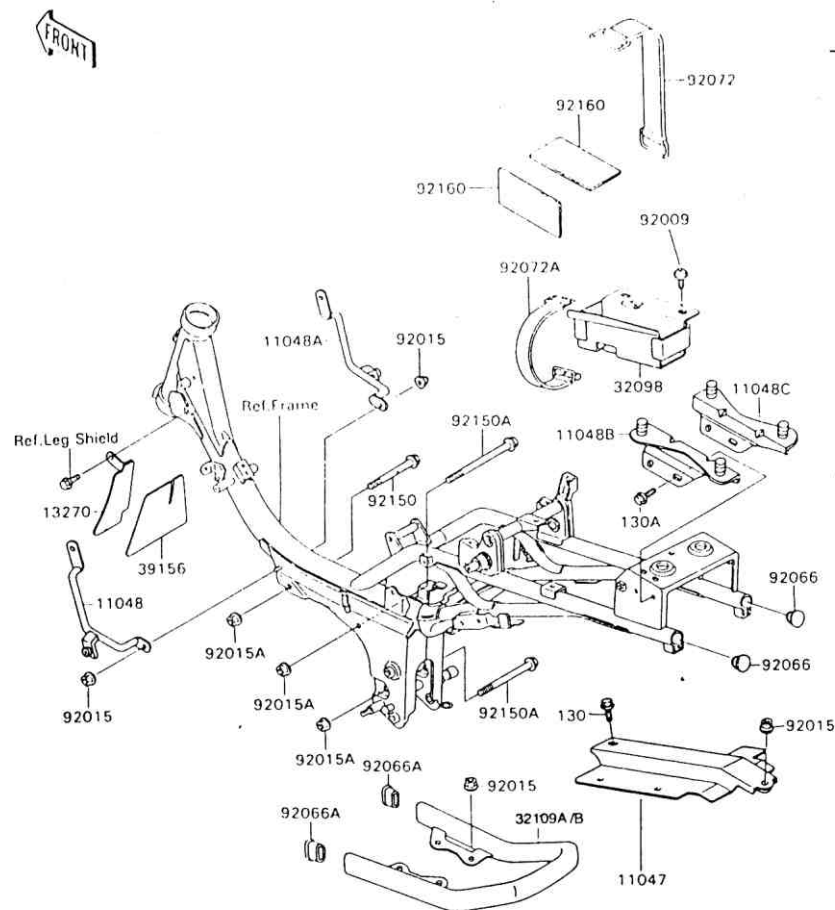
Ref. No.	Part No.	Description	Spec Code	Quantity-A1		5
				'93		
				A1		
32160	32160 - 1285	FRAME - COMP			1	
46098	46098 - 016	CAP, STEERING STEM			1	
92015	92015 - 1900	NUT, STEERING STEM LOCK, 30 MM			1	
92015A	92015 - 1901	NUT, 30 MM			1	
92047	92047 - 011	RACE, STEERING STEM BEARING			1	
92048	92048 - 006	RACE, STEERING STEM BEARING			1	
92048A	92048 - 008	RACE, STEERING STEM BEARING			1	
600	600A0800	BALL - STEEL, 1/4"			39	

This catalog covers:
 '93 AH115-A1 Chassis

GRID NO.

D - 4

This grid covers:
 Frame Fitting



Ref. No.	Part No.	Description	Spec Code	Quantity - AH115		
				'93	A1	
11047	11047 - 1707	BRACKET		1		
11048	11048 - 1052	BRACKET, SIDE COVER, LH		1		
11048A	11048 - 1053	BRACKET, SIDE COVER, RH		1		
11048B	11048 - 1054	BRACKET, TAIL GRIP, LH		1		
11048C	11048 - 1055	BRACKET, TAIL GRIP, RH		1		
13270	13270 - 1095	PLATE, AIR CLEANER		1		
32098	32098 - 1099	CASE - TOOL		1		
32109	32109 - 1234 - RD	GRIP - FRAME, TAIL, RED		1		
32109A	32109 - 1234 - BL	GRIP - FRAME, TAIL, BLUE		1		
32109B	32109 - 1234 - BK	GRIP - FRAME, TAIL, BLACK		1		
39156	39156 - 1378	PAD, AIR CLEANER		1		
92009	92009 - 1677	SCREW, 6 X 8, BLACK		3		
92015	92015 - 1233	NUT, FLANGED, 6 MM		9		
92015A	92015 - 1406	NUT, FLANGED, 8 MM		3		
92066	92066 - 1364	PLUG		2		
92066A	92066 - 1386	PLUG, TAIL GRIP		2		
92072	92072 - 045	BAND, L = 90		1		
92072A	92072 - 1257	BAND		1		
92150	92150 - 1670	BOLT, FLANGED, 8 X 95		1		
92150A	92150 - 1671	BOLT, FLANGED, 8 X 125		2		
92160	92160 - 1292	DAMPER BATTERY		2		
130	130J0610	BOLT - FLANGED		1		
130A	130J0612	BOLT - FLANGED		4		

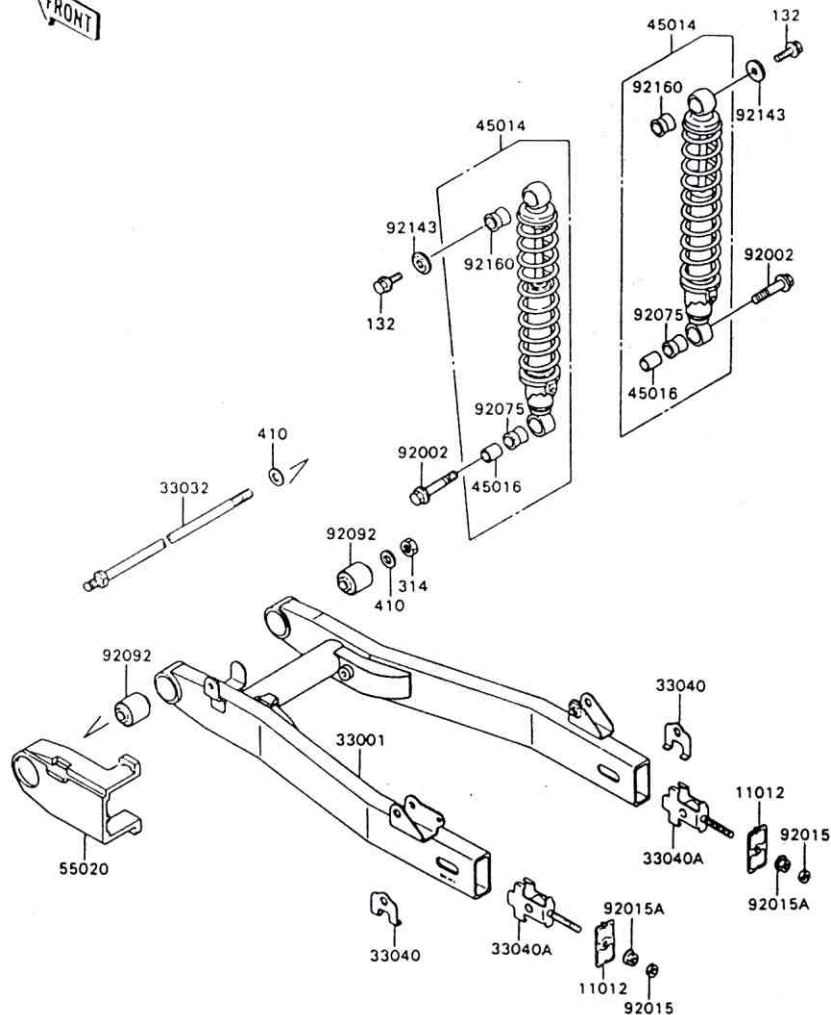
This catalog covers:
'93 AH115-A1 Chassis

GRID NO.

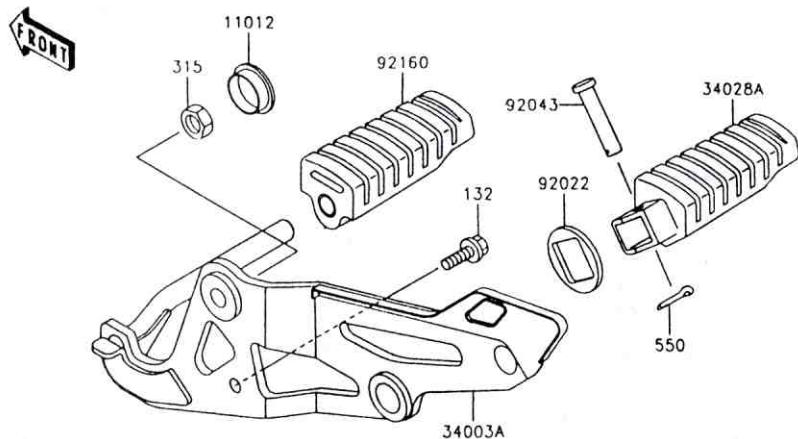
D - 5

This grid covers:
Swing Arm/Shock Absorber

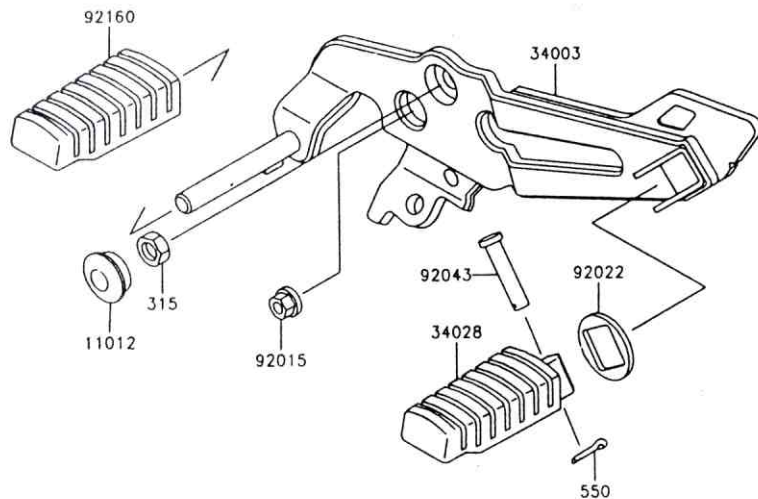
FRONT



Ref. No.	Part No.	Description	Spec Code	Quantity-AH . . .	
				'93	A1
11012	11012 - 1789	CAP, CHAIN ADJUSTER		2	
33001	33001 - 1422	ARM - COMP - SWING		1	
33032	33032 - 1168	SHAFT - SWING ARM		1	
33040	33040 - 1057	ADJUSTER - CHAIN		2	
33040A	33040 - 1120	ADJUSTER - CHAIN, INNER		2	
45014	45014 - 1552	SHOCK ABSORBER		2	
45016	45016 - 003	COLLAR, SHOCK ABSORBER		2	
55020	55020 - 1496	GUARD, CHAIN		1	
92002	92002 - 1829	BOLT, FLANGED, 10 X 35		2	
92015	92015 - 1364	NUT, 8 MM		2	
92015A	92015 - 1406	NUT, FLANGED, 8 MM		2	
92075	92075 - 1020	DAMPER, SHOCK ABSORBER		2	
92092	92092 - 005	BUSHING - RUBBER		2	
92143	92143 - 1519	COLLAR		2	
92160	92160 - 1440	DAMPER, SHOCK ABSORBER		2	
132	132E0616	BOLT - FLANGED - SMALL		2	
314	314B1200	NUT - HEX - FINE		1	
410	410F1200	WASHER - PLAIN - SMALL, 12 MM, BLACK		2	



Ref. No.	Part No.	Description	Spec Code	Quantity- AH115	
				93	A1
11012	11012 - 1796	CAP		2	
34003	34003 - 1383	HOLDER - STEP, FR, LH		1	
34003A	34003 - 1384	HOLDER - STEP, FR, RH		1	
34028	34028 - 1128	STEP, LH		1	
34028A	34028 - 1129	STEP, RH		1	
92015	92015 - 1180	NUT, FLANGED, 10 MM		1	
92022	92022 - 1514	WASHER, STEP FITTING		2	
92043	92043 - 1464	PIN, 6 X 28		2	
92160	92160 - 1314	DAMPER, STEP		2	
132	132E0820	BOLT - FLANGED SMALL		1	
315	315G1200	NUT - HEX - FINE		2	
550	550D2015	PIN - COTTER, 2.0 X 15		2	

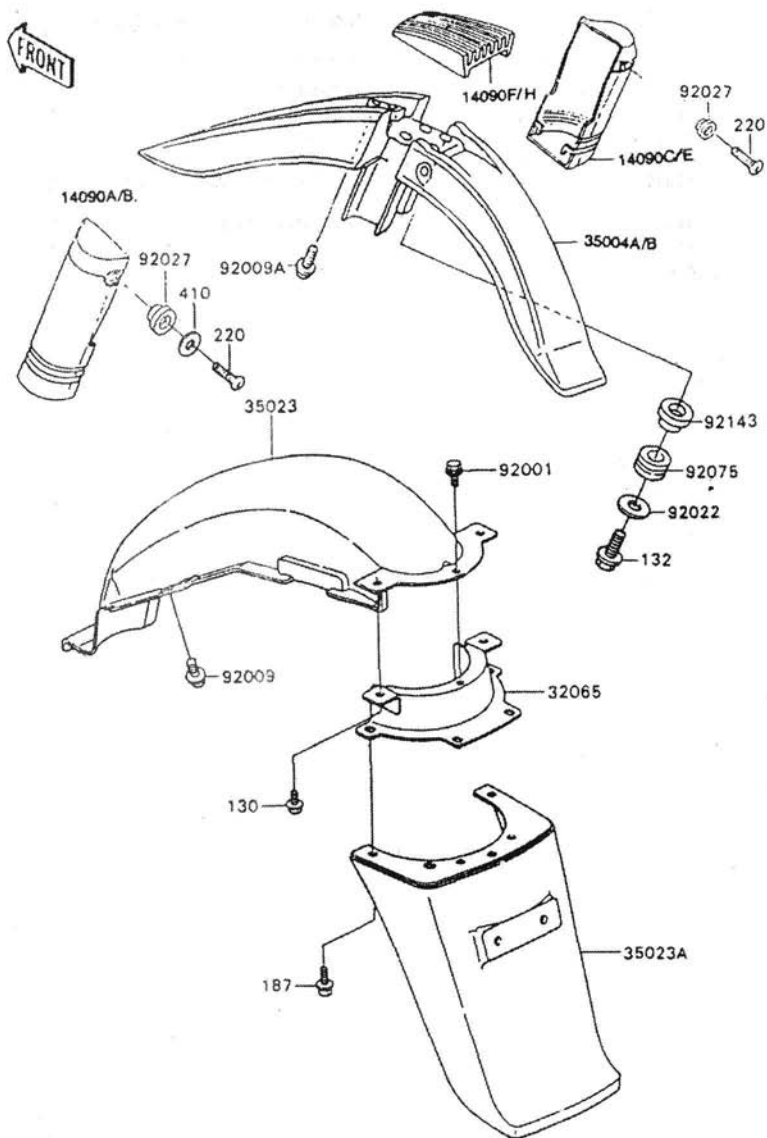


This catalog covers:
 '93 AH115-A1 Chassis

GRID NO.

D-7

This grid covers:
 Fender



Ref. No.	Part No.	Description	Spec Code	Quantity-AH115	
				'93	A1
14090	14090 - 1311 - RD	COVER FRONT FENDER LH, RED		1	
14090A	14090 - 1311 - BL	COVER FRONT FENDER LH, BLUE		1	
14090B	14090 - 1311 - BK	COVER FRONT FENDER LH, BLACK		1	
14090C	14090 - 1312 - RD	COVER FRONT FENDER RH, RED		1	
14090D	14090 - 1312 - BL	COVER FRONT FENDER RH, BLUE		1	
14090E	14090 - 1312 - BK	COVER FRONT FENDER RH, BLACK		1	
14090F	14090 - 1313 - RD	COVER FRONT FENDER UPP, RED		1	
14090G	14090 - 1313 - BL	COVER FRONT FENDER UPP, BLUE		1	
14090H	14090 - 1313 - BK	COVER FRONT FENDER UPP, BLACK		1	
32065	32065 - 1275	BRACKET - FENDER, RR		1	
35004	35004 - 1312 - NP	SIN PINTAR			
	35004 - 1312 - RD	FRONT FENDER, RED		1	
35004A	35004 - 1312 - BL	FRONT FENDER, BLUE		1	
35004B	35004 - 1312 - BK	FRONT FENDER, BLACK		1	
35023	35023 - 1353	FENDER - REAR, FR		1	
35023A	35023 - 1364	FENDER - REAR, RR		1	
92001	92001 - 1862	BOLT - W/SP, 6 X 14		1	
92009	92009 - 1288	SCREW, 6 X 14		2	
92009A	92009 - 1444	SCREW, TAPPING, 4 X 12		4	
92022	92022 - 125	WASHER, 6.5 X 20 X 1.6		4	
92027	92027 - 1933	COLLAR, L = 5.6		2	
92075	92075 - 1634	DAMPER		4	
92143	92143 - 1016	COLLAR, L = 9.6		4	
130	130D0612	BOLT - FLANGED		2	
132	132G0625	BOLT - FLANGED - SMALL		4	
187	187B0620	BOLT - UPSET - WSP		4	
220	220B0616	SCREW - PAN - CROS, 6 X 16		2	
410	410B0600	WASHER - PLAIN - SMALL, 6 MM		1	

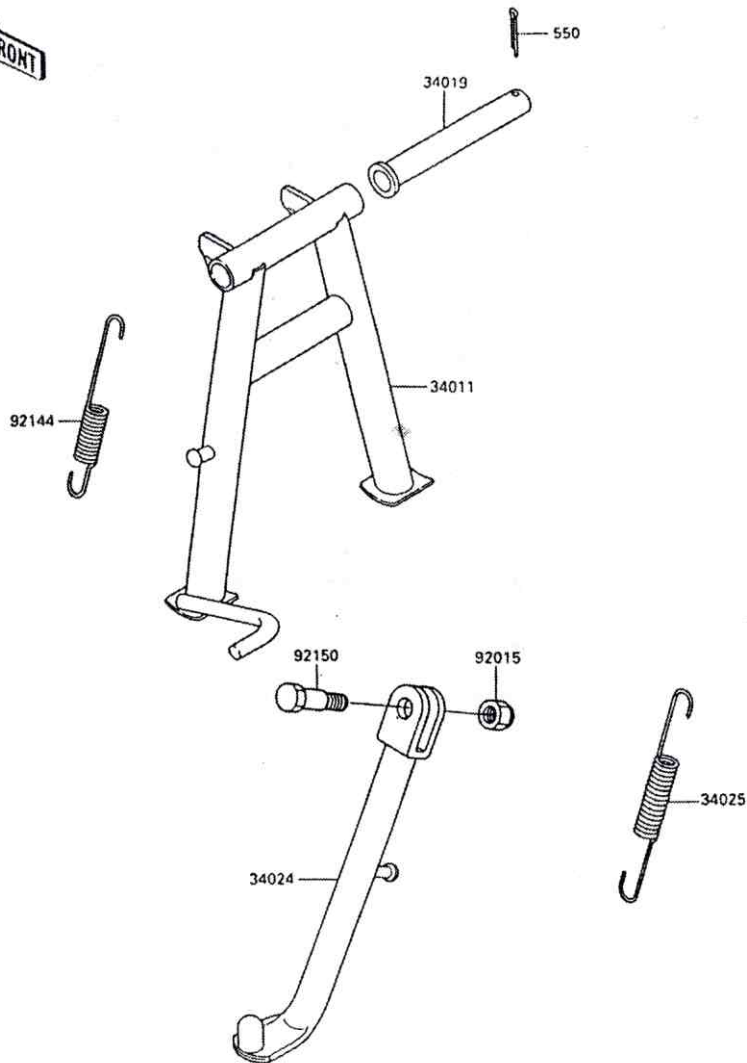
This catalog covers:
 '93 AH115-A1 Chassis

GRID NO.

D - 8

This grid covers:
 Stand

FRONT



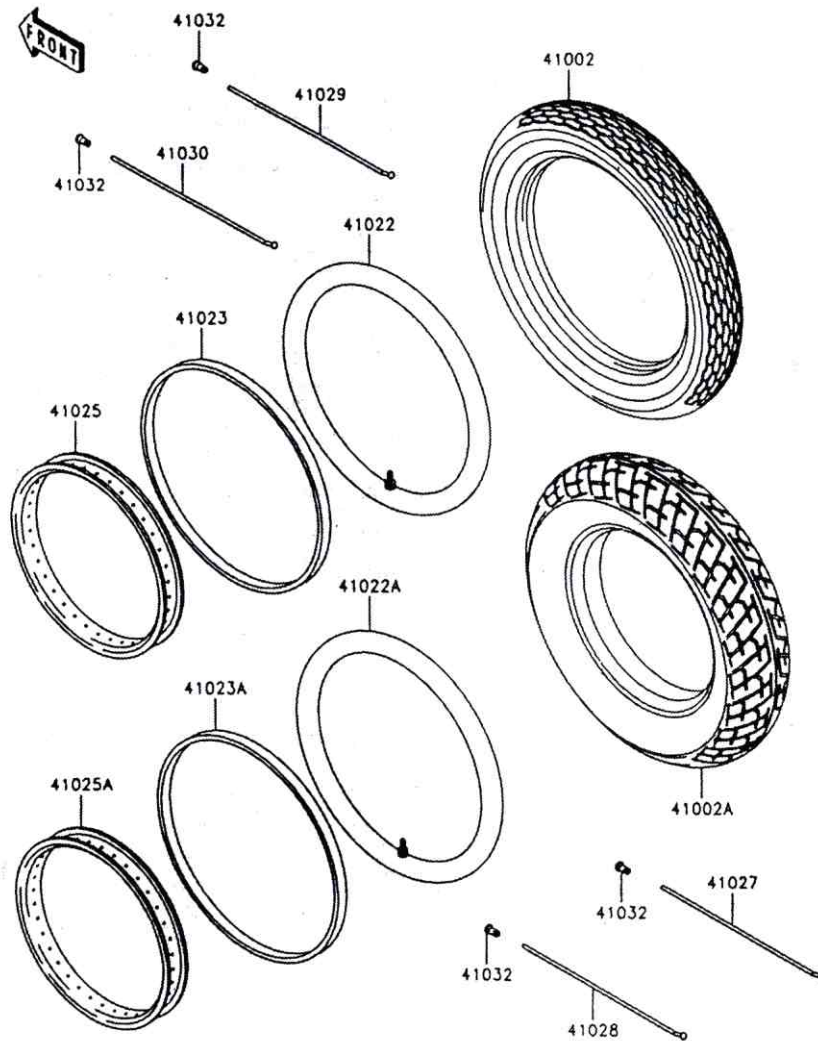
Ref. No.	Part No.	Description	Spec Code	Quantity- AH115		
				'93		
34011	34011 - 1156	STAND - CENTER				1
34019	34019 - 1054	SHAFT - STAND, CNT				1
34024	34024 - 1293	STAND - SIDE				1
34025	34025 - 005	SPRING, STAND				1
92015	92015 - 1188	NUT, LOCK, 10 MM, BLACK				1
92144	92144 - 1724	SPRING, CENTER STAND				1
92150	92150 - 1545	BOLT, SIDE STAND				1
550	550D3030	PIN - COTTER, 3.0 X 30				1

This catalog covers:
93 AH115-A1 Chassis

GRID NO.

D - 9

This grid covers:
Tire



Ref. No.	Part No.	Description	Spec Code	Quantity-AH115	
				93	A1
41002	41002 - 1934	TIRE, FR, 2.50 - 17, NF29		1	
41002A	41002 - 1935	TIRE, RR, 2.75 - 17, NR29		1	
41022	41022 - 1159	TUBE - TIRE, 2.50 - 17		1	
41022A	41022 - 1160	TUBE - TIRE, 2.75 - 17		1	
41023	41023 - 1093	BAND - RIM, 2.50 - 17		1	
41023A	41023 - 1094	BAND - RIM, 2.75 - 17		1	
41025	41073 - 1500 - WT	RIM, FR, 1.40 X 17		1	
41025A	41073 - 1499 - WT	RIM, RR, 1.60 X 17		1	
41027	41027 - 074	SPOKE - ASSY - INNER		18	
41028	41028 - 073	SPOKE - ASSY - OUTER		18	
41029	41029 - 1208	SPOKE - INNER, FR		18	
41030	41030 - 1123	SPOKE - OUTER, FR		18	
41032	41032 - 024	NIPPLE - SPOKE		36	

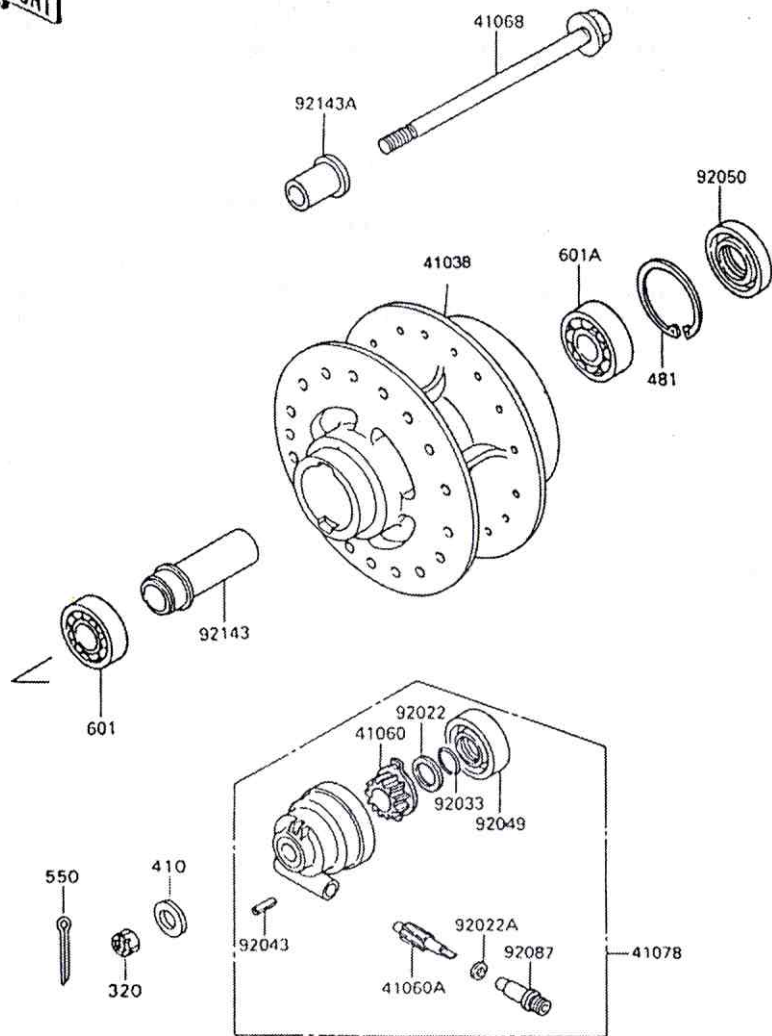
This catalog covers:
 '93 AH115-A1 Chassis

GRID NO.

D - 10

This grid covers:
 Front Hub

FRONT



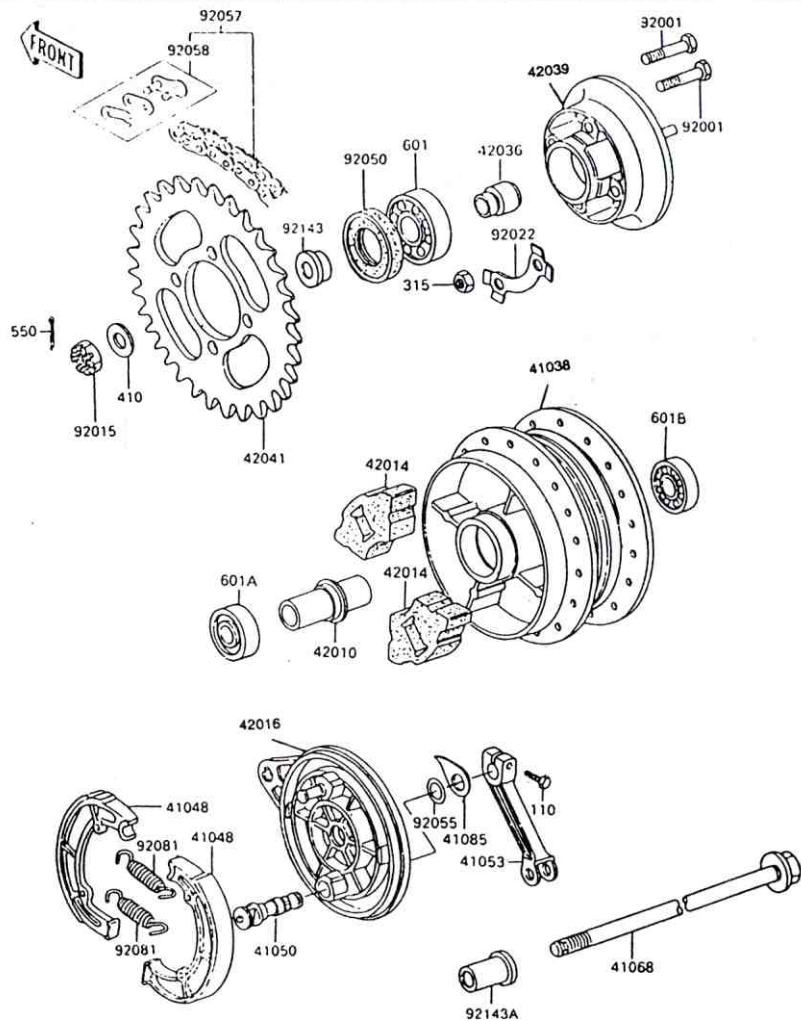
Ref. No.	Part No.	Description	Spec Code	Quantity- AH115		
				93		
41038	41038 - 1252	DRUM FRONT BRAKE		1		
41060	41060 - 1133	GEAR - METER, SCREW, 20T		1		
41060A	41060 - 1134	GEAR - METER, SCREW, 8T		1		
41068	41068 - 1090	AXLE, FR		1		
41078	41078 - 1083	CASE - ASSY - METER GEAR		1		
92022	92022 - 1510	WASHER, 20 X 29 X 1.0		1		
92022A	92022 - 1511	WASHER, 5 X 9.5 X 0.8		1		
92033	92033 - 1160	RING - SNAP, 19 MM		1		
92043	92043 - 1220	PIN, SPRING, 2 X 14		1		
92049	92049 - 1173	SEAL - OIL		1		
92050	92050 - 059	SEAL - OIL, FR BRAKE DRUM		1		
92087	92087 - 1051	BUSHING - METER GEAR		1		
92143	92143 - 1388	COLLAR, FR BRAKE DRUM, L = 48		1		
92143A	92143 - 1389	COLLAR, FR AXLE, L = 24		1		
320	320G1200	NUT - CASTLE		1		
410	410B1200	WASHER - PLAIN - SMALL, 12 MM		1		
481	481J3700	CIRCLIP - TYPE - C, 37 MM		1		
550	550D3025	PIN - COTTER, 3.0 X 25		1		
601	601B6201G	BEARING - BALL, # 6201G		1		
601A	601B6301G	BEARING - BALL, # 6301G		1		

This catalog covers.
'93 AH115-A1 Chassis

GRID NO.

D - 11

This grid covers:
Rear Hub



Ref. No.	Part No.	Description	Spec Code	Quantity-AH115	
				'93	A1
41038	41038 - 1253	DRUM REAR BRAKE		1	
41048	41048 - 1020	SHOE - BRAKE		2	
41050	41050 - 012	CAM - BRAKE		1	
41053	41053 - 1036	LEVER - BRAKE CAM, RR		1	
41068	41068 - 1353	AXLE, RR		1	
41085	41085 - 003	INDICATOR, BRAKE SHOE		1	
42010	42010 - 005	COLLAR, L = 58		1	
42014	42014 - 016	DAMPER, RR HUB SHOCK		4	
42016	42016 - 1017	PANEL REAR BRAKE		1	
42036	42036 - 1299	SLEEVE, RR HUB COUPLING, L = 41		1	
42039	42039 - 1129	COUPLING REAR HUB		1	
42041	42041 - 1416	SPROCKET - HUB, 40T		1	
92001	92001 - 082	BOLT, HUB SPROCKET, 10 X 36		4	
92015	92015 - 1870	NUT, CASTLE, 12 MM		1	
92022	92022 - 1705	WASHER, LOCK		2	
92050	92050 - 009	SEAL - OIL, RR BRK DRUM		1	
92055	92055 - 004	RING - O, BRAKE CAM		1	
92057	92057 - 1363	CHAIN, DRIVE, EK428G X 108L		1	
92058	92058 - 1014	JOINT - CHAIN, EK428-G		1	
92081	92081 - 1766	SPRING, BRAKE SHOE		2	
92143	92143 - 1533	COLLAR, RR AXLE, LH, L = 17		1	
92143A	92143 - 1590	COLLAR, RR AXLE, RH, L = 47		1	
110	110G0622	BOLT, 6 X 22		1	
315	315B1000	NUT - HEX - FINE, 10 MM		4	
410	410B1200	WASHER - PLAIN - SMALL, 12 MM		1	
550	550D3025	PIN - COTTER, 3.0 X 25		1	
601	601B6004G	BEARING - BALL, #6004G		1	
601A	601B6201ZG	BEARING - BALL, #6201ZG		1	
601B	601B6301ZG	BEARING - BALL, #6301ZG		1	

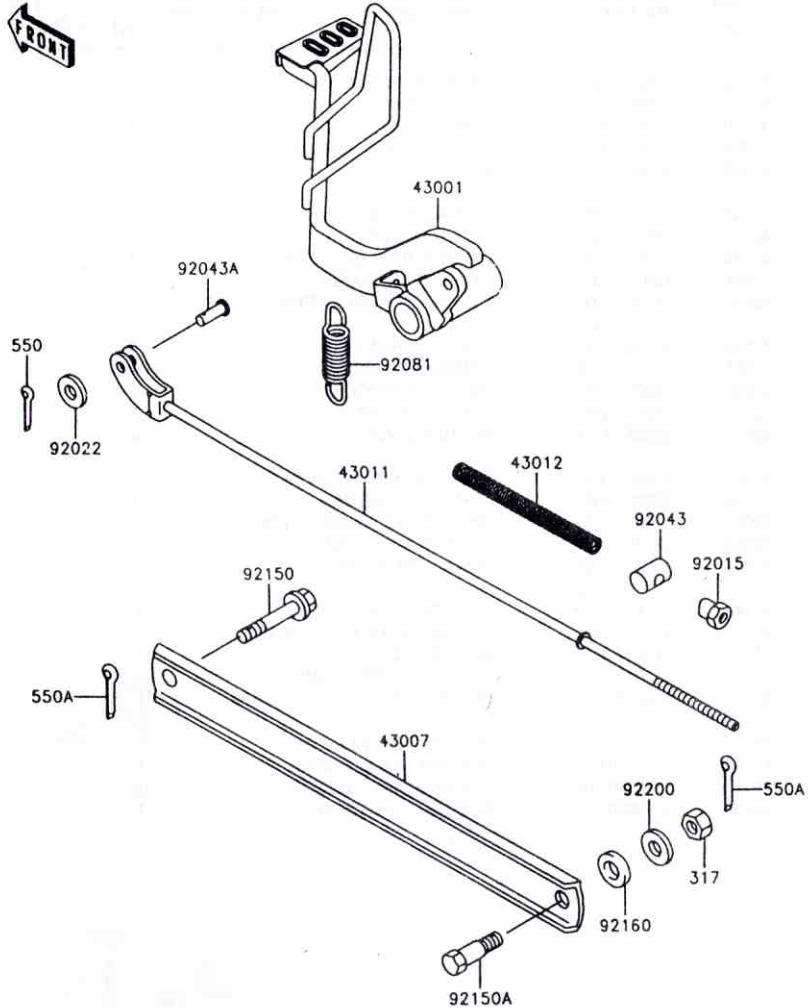
This catalog covers:
 '93 AH115-A1 Chassis

GRID NO.

D - 12

This grid covers:
 Brake Pedal

FRONT

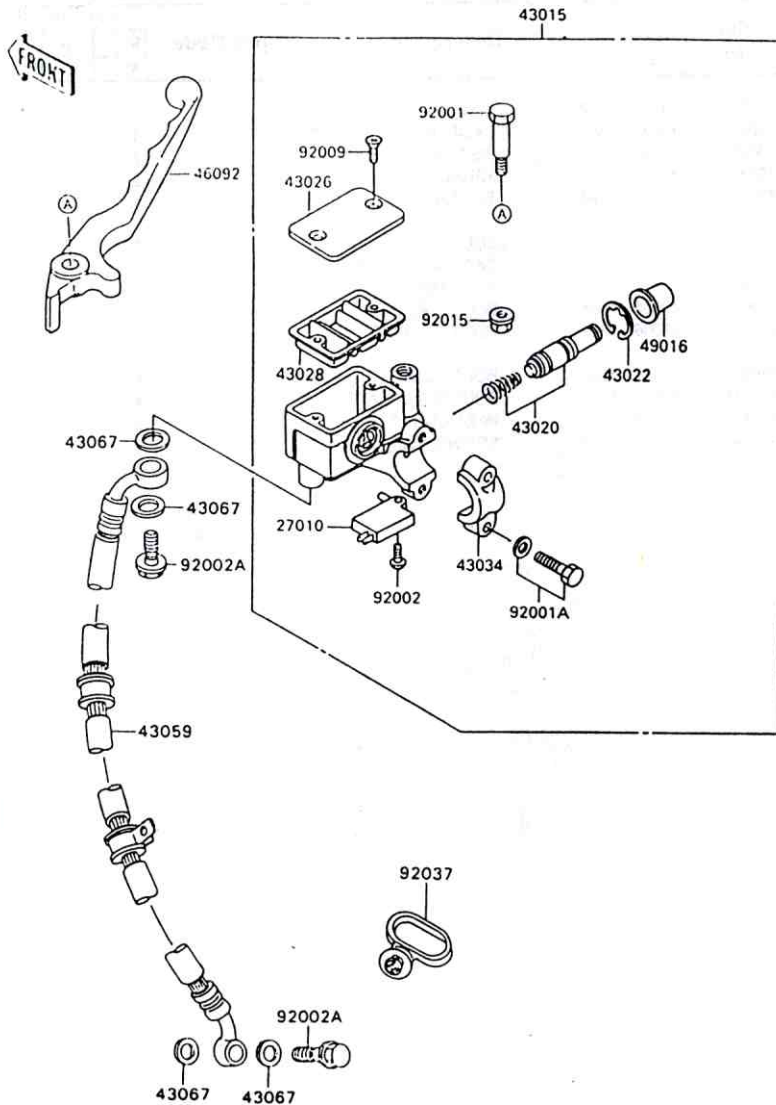


Ref. No.	Part No.	Description	Spec Code	Quantity- AH115	
				'93	A1
43001	43001 - 1327	LEVER - BRAKE, PEDAL		1	
43007	43007 - 1174	ROD - TORQUE		1	
43011	43011 - 1158	ROD - BRAKE		1	
43012	43012 - 001	SPRING, BRAKE ROD		1	
92015	92015 - 042	NUT, BRAKE ROD		1	
92022	92022 - 1588	WASHER, 6.3 X 10.2 X 1.6		1	
92043	92043 - 039	PIN, BRAKE ROD		1	
92043A	92043 - 064	PIN, 6 X 17		1	
92081	92081 - 1947	SPRING, STEP RETURN		1	
92150	92150 - 1667	BOLT, FLANGED, 10 X 70		1	
92150A	92150 - 1668	BOLT, 8 X 30.1		1	
92160	92160 - 1313	DAMPER		1	
92200	92200 - 1175	WASHER, 8 X 22 X 2		1	
317	317B0800	NUT - HEX - SMALL, 8 MM		1	
550	550D2015	PIN - COTTER, 2.0 X 15		1	
550A	550D2018	PIN - COTTER, 2.0 X 18		2	

This catalog covers:
 '93 AH115-A1 Chassis

GRID NO.
D - 13

This grid covers:
 Front Master Cylinder

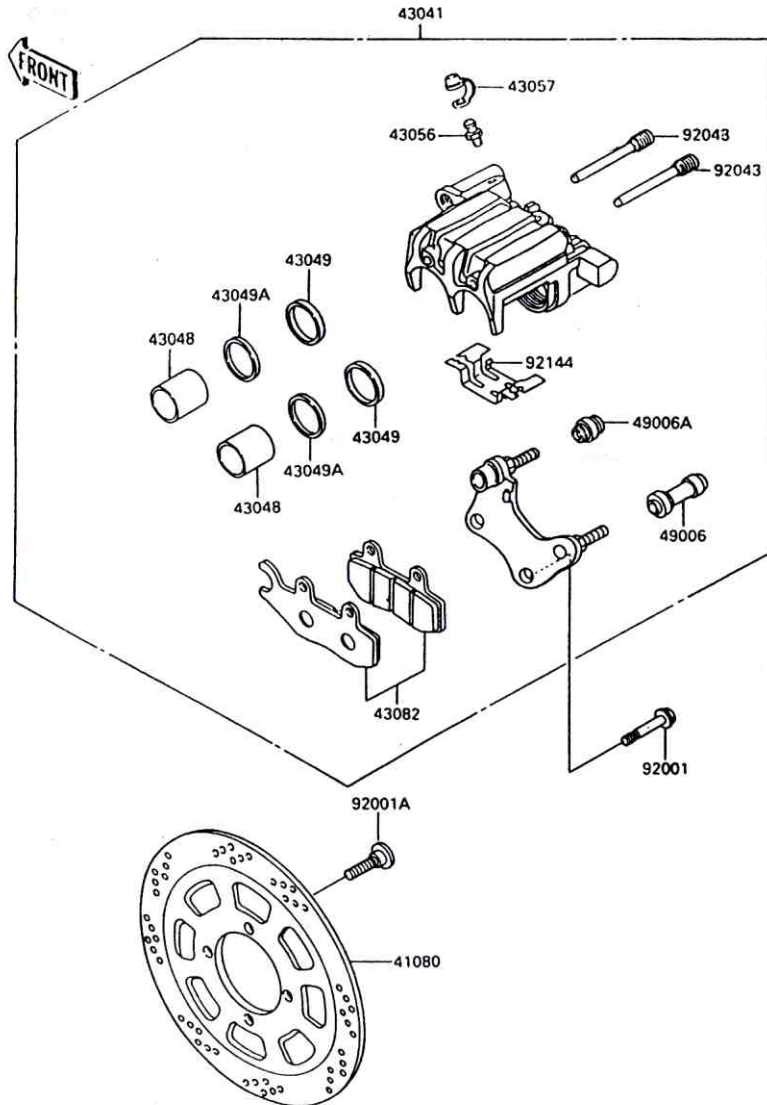


Ref. No.	Part No.	Description	Spec Code	Quantity-AH115	
				'93	A1
27010	27010 - 1170	SWITCH, BRAKE		1	
43015	43015 - 1533	CYLINDER - ASSY - MASTER, FR		1	
43020	43020 - 1098	PISTON - COMP - BRAKE		1	
43022	43022 - 1010	STOPPER - BRAKE, PISTON		1	
43026	43026 - 1074	CAP - BRAKE		1	
43028	43028 - 1061	DIAPHRAGM		1	
43034	43034 - 1016	HOLDER - BRAKE, MASTER CYLINDER		1	
43059	43059 - 1748	HOSE - BRAKE, FR		1	
43067	43067 - 001	WASHER, 10.5 X 15 X 1.5		4	
46092	46092 - 1158	LEVER - GRIP, FRONT BRAKE		1	
49016	49016 - 1044	COVER - SEAL, MASTER CYLINDER		1	
92001	92001 - 1728	BOLT, FRONT BRAKE LEVER		1	
92001A	92001 - 1729	BOLT, 6 X 25, BLACK		2	
92002	92002 - 1323	BOLT, SCREW, 4 X 12		1	
92002A	92002 - 1888	BOLT, OIL, L = 23		2	
92009	92009 - 1458	SCREW, 4 MM		2	
92015	92015 - 1233	NUT, FLANGED, 6 MM		1	
92037	92037 - 1459	CLAMP, CABLE		1	

This catalog covers:
 '93 AH115-A1 Chassis

GRID NO.
D - 14

This grid covers:
 Front Caliper



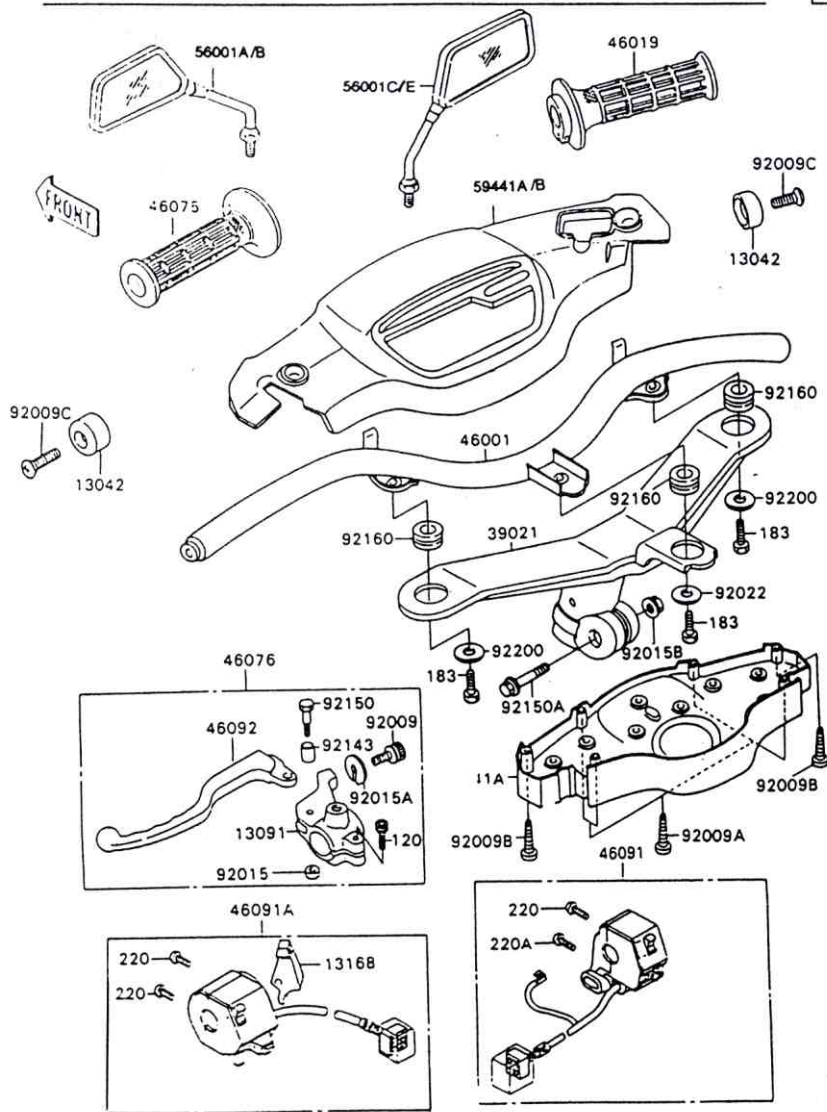
Ref. No.	Part No.	Description	Spec Code	Quantity- AH115	
				'93	A1
41080	41080 - 1357	DISC, FR		1	
43041	43041 - 1505	CALIPER - ASSY, FR, RH		1	
43048	43048 - 1066	PISTON - CALIPER		2	
43049	43049 - 1063	PACKING		2	
43049A	43049 - 1064	PACKING		2	
43056	43056 - 1056	BREATHER - BRAKE		1	
43057	43057 - 1001	CAP - BREATHER		1	
43082	43082 - 1158	PAD - ASSY - BRAKE		1	
49006	49006 - 1088	BOOT, CALIPER		1	
49006A	49006 - 1242	BOOT, CALIPER		1	
92001	92001 - 1837	BOLT, FLANGED, 8 X 36		2	
92001A	92001 - 1951	BOLT, DISC PLATE, 8 X 30		4	
92043	92043 - 1416	PIN, HUNGER		2	
92144	92144 - 1557	SPRING, PAD		1	

This catalog covers:
 '93 AH115-A1 Chassis

GRID NO.

E - 3

This grid covers:
HANDLEBAR (1/2)



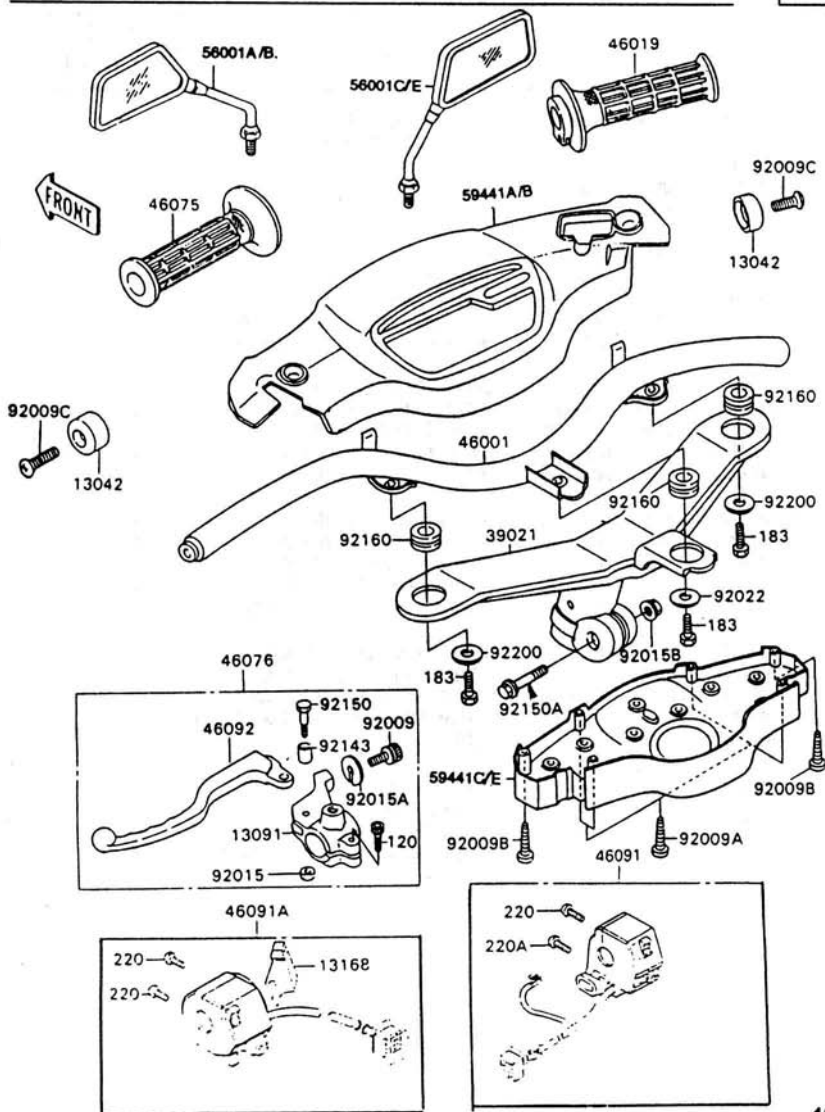
Ref. No.	Part No.	Description	Spec Code	Quantity-AH115			
				'93	A1		
13042	13042 - 1084	WEIGHT, HANDLE			2		
13091	13091 - 1829	HOLDER, CLUTCH LEVER			1		
13168	13168 - 1400	LEVER, CHOKE			1		
39021	39021 - 1052	BRACKET - HANDLE POLE			1		
46001	46001 - 1304	HANDLE - ASSY			1		
46019	46019 - 1080	GRIP - ASSY, THROTTLE			1		
46075	46075 - 1028	GRIP, LH			1		
46076	46076 - 1187	LEVER - ASSY - GRIP, CLUTCH			1		
46091	46091 - 1600	HOUSING - ASSY - CONTROL, RH			1		
46091A	46091 - 1601	HOUSING - ASSY - CONTROL, LH			1		
46092	46092 - 1176	LEVER - GRIP, CLUTCH			1		
56001	56001 - 1435 - BL	MIRROR - ASSY LH, BLUE			1		
56001A	56001 - 1435 - RD	MIRROR - ASSY LH, RED			1		
56001B	56001 - 1435 - BK	MIRROR - ASSY LH, BLACK			1		
56001C	56001 - 1436 - BL	MIRROR - ASSY RH, BLUE			1		
56001D	56001 - 1436 - RD	MIRROR - ASSY RH, RED			1		
56001E	56001 - 1436 - BK	MIRROR - ASSY RH, BLACK			1		
59441	59441 - 1104 - RD	COVER - HANDLE, UPP, RED			1		
59441A	59441 - 1104 - BL	COVER - HANDLE, UPP, BLUE			1		
59441B	59441 - 1104 - BK	COVER - HANDLE, UPP, BLACK			1		
59441C	59441 - 1105 - RD	COVER - HANDLE, UPP, RED			1		
59441D	59441 - 1105 - BL	COVER - HANDLE, UPP, BLUE			1		
59441E	59441 - 1105 - BK	COVER - HANDLE, UPP, BLACK			1		
92009	92009 - 1134	SCREW, CABLE ADJUST, 8 MM, BLACK			1		
92009A	92009 - 1428	SCREW, 4 X 20			4		
92009B	92009 - 1605	SCREW, 4 X 16			2		
92009C	92009 - 1670	SCREW, 8 X 30			2		
92015	92015 - 1191	NUT, LOCK, 6 MM BLACK			1		
92015A	92015 - 1197	NUT, CABLE ADJUST LOCK, BLACK			1		

This catalog covers:
 '93 AH115-A1 Chassis

GRID NO.

E - 4

This grid covers:
 Handlebar (2/2)



Ref. No.	Part No.	Description	Spec Code	Quantity- AH115	
				'93	A1
92015B	92015 - 1502	NUT, FLANGED, 10 MM		1	
92022	92022 - 1561	WASHER, 8.5 X 20 X 1.6		1	
92143	92143 - 1351	COLLAR		1	
92150	92150 - 1682	BOLT, LEVER SET		1	
92150A	92150 - 1719	BOLT, FLANGED, 10 X 51		1	
92160	92160 - 1457	DAMPER		3	
92200	92200 - 1165	WASHER		2	
120	120S0625	BOLT, SOCKET, 6 X 25, BLACK		1	
183	183H0820	BOLT - UPSET - WS - SMALL		3	
220	220C0525	SCREW - PAN - CROS		3	
220A	220C0540	SCREW - PAN - CROS		1	

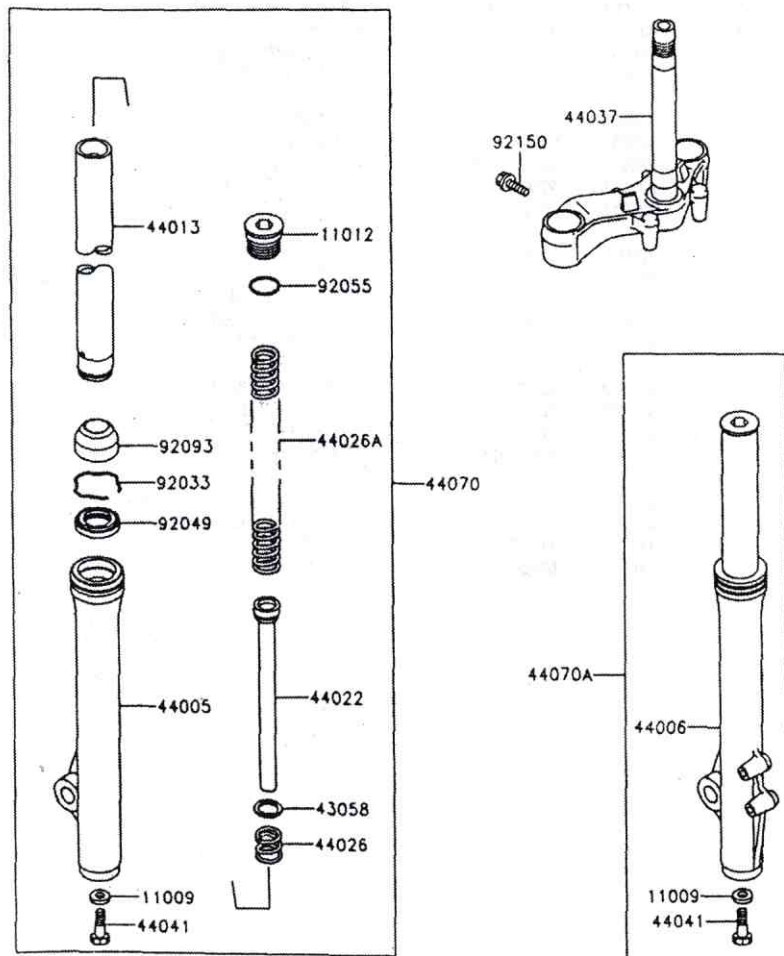
This catalog covers:
'93 AH115-A1 Chassis

GRID NO.

E - 5

This grid covers:
Front Fork

FRONT



Ref. No.	Part No.	Description	Spec Code	Quantity-AH115	
				'93	A1
11009	11009 - 1325	GASKET, PIPE - COMP - SUSP		2	
11012	11012 - 1851	CAP, FORK TOP		2	
43058	43058 - 1070	RING		2	
44001	44001 - 1926	FORK FRONT COMP (N.I.)			
44005	44005 - 1326	PIPE - LEFT FORK OUTER		1	
44006	44006 - 1324	PIPE - RIGHT FORK OUTER		1	
44013	44013 - 1389	PIPE - FORK INNER		2	
44022	44022 - 1291	CYLINDER - FORK		2	
44026	44026 - 1542	SPRING - FRONT FORK		2	
44026A	44026 - 1543	SPRING - FRONT FORK		2	
44037	44037 - 1314	HOLDER - FORK UNDER		1	
44041	44041 - 040	BOLT, SOCKET, FORK CYLINDER		2	
44070	44070 - 1250	DAMPER - ASSY, FORK, LH		1	
44070A	44070 - 1251	DAMPER - ASSY, FORK, RH		1	
92033	92033 - 1285	RING - SNAP		2	
92048	92048 - 1096	RACE, STEERING STEM BEARING		1	
92049	92049 - 1412	SEAL - OIL		2	
92055	92055 - 1522	RING-O		2	
92093	92093 - 1356	SEAL, FORK OUTER TUBE		2	
92150	92150 - 1695	BOLT, FLANGED, 8 X 30		4	

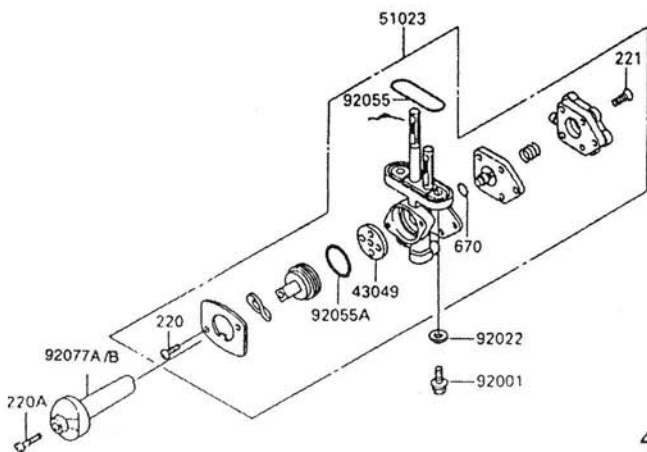
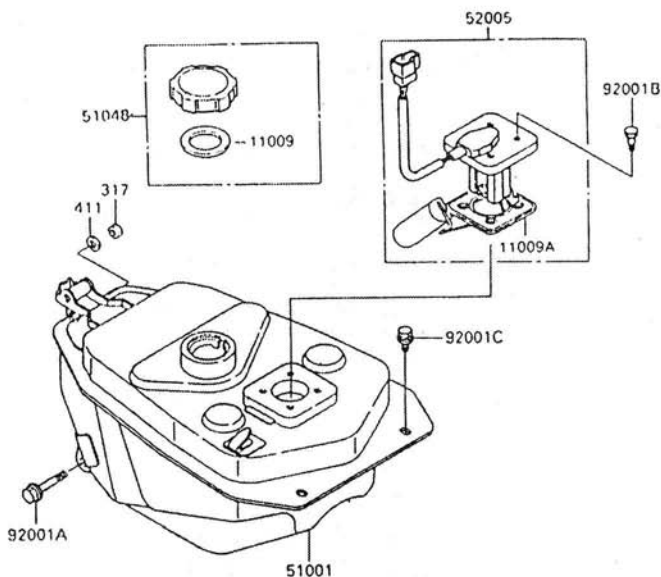
This catalog covers:
 '93 AH115-A1 Chassis

GRID NO.

E - 6

This grid covers:
 Fuel Tank

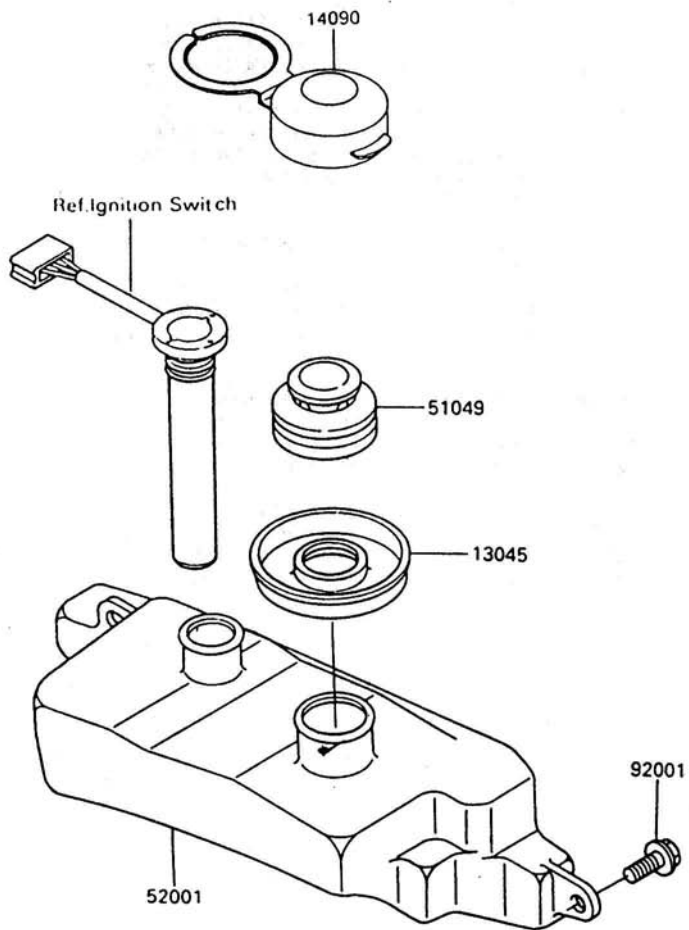
FRONT



Ref. No.	Part No.	Description	Spec Code	Quantity- AH115	
				93	A1
11009	11009 - 1326	GASKET, TANK CAP		1	
11009A	11009 - 1656	GASKET, FUEL GAUGE		1	
43049	43049 - 1066	PACKING, TAP VALVE		1	
51001	51001 - 1385	TANK - COMP - FUEL		1	
51023	51023 - 1180	TAP - ASSY, FUEL		1	
51048	51048 - 1052	CAP - ASSY - TANK		1	
52005	52005 - 1100	GAUGE, FUEL		1	
92001	92001 - 1091	BOLT, 6 X 20		2	
92001A	92001 - 1583	BOLT, FLANGED, 8 X 70		1	
92001B	92001 - 1705	BOLT, FUEL GAUGE		4	
92001C	92001 - 1862	BOLT, W/SP, 6 X 14		2	
92022	92022 - 183	WASHER, 6.2 X 11 X 1.5		2	
92055	92055 - 1112	RING-O, FUEL TAP PACKING		1	
92055A	92055 - 1419	RING-O, TAP LEVER		1	
92077	92077 - 1113 - RD	KNOB, FUEL TAP, RED		1	
92077A	92077 - 1113 - BL	KNOB, FUEL TAP, BLUE		1	
92077B	92077 - 1113 - BK	KNOB, FUEL TAP, BLACK		1	
220	220B0308	SCREW - PAN - CROS		2	
220A	220C0425	SCREW - PAN - CROS, 4 X 25, BLACK		1	
221	221B0414	SCREW - CSK - CROS, 4 X 14		5	
317	317B0800	NUT - HEX - SMALL, 8 MM		1	
411	411B0800	WASHER - PLAIN, 8 MM		1	
670	670B1504	O RING, 4 MM		1	

This catalog covers:
 '93 AH115-A1 Chassis

FRONT



GRID NO.

E-7

This grid covers:
 Oil Tank

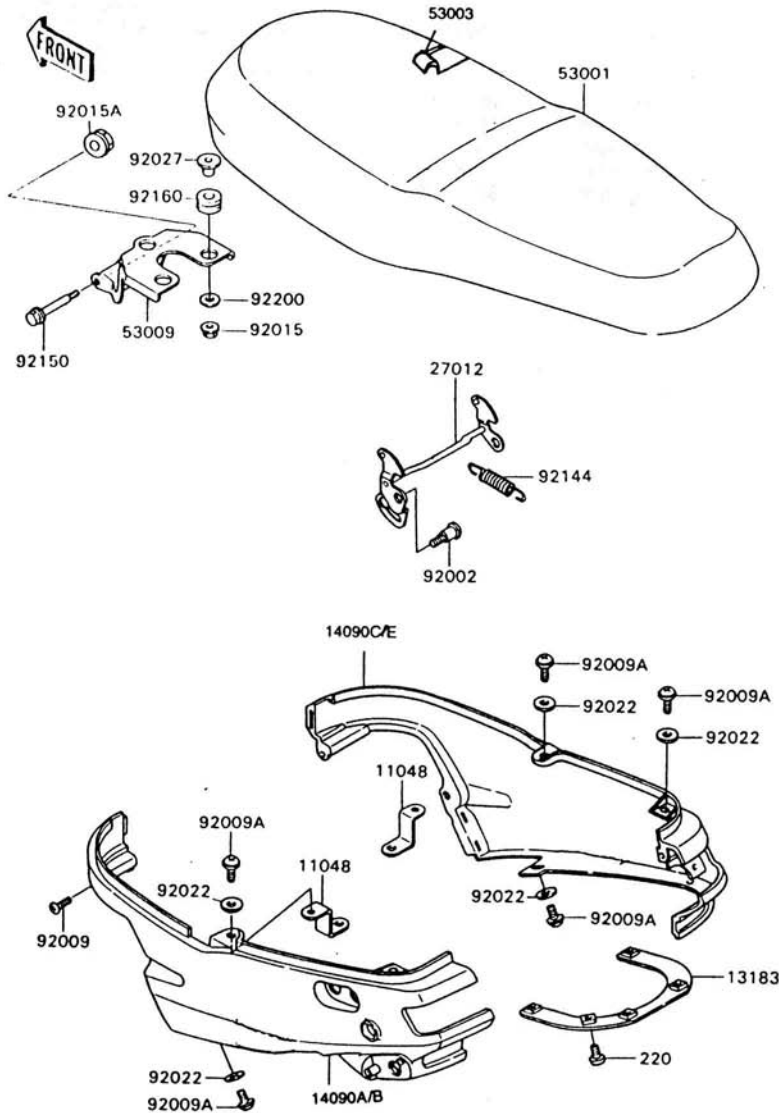
Ref. No.	Part No.	Description	Spec Code	Quantity-AH115			
				'93	A1		
13045	13045 - 1053	RECEIVER - OIL					1
14090	14090 - 1329	COVER, OIL TANK CAP					1
51049	51049 - 1096	CAP - TANK					1
52001	52001 - 1088	TANK - OIL					1
92001	92001 - 1926	BOLT, 6 X 14					2

This catalog covers:
 '93 AH115-A1 Chassis

GRID NO.

E - 8

This grid covers:
 Seat



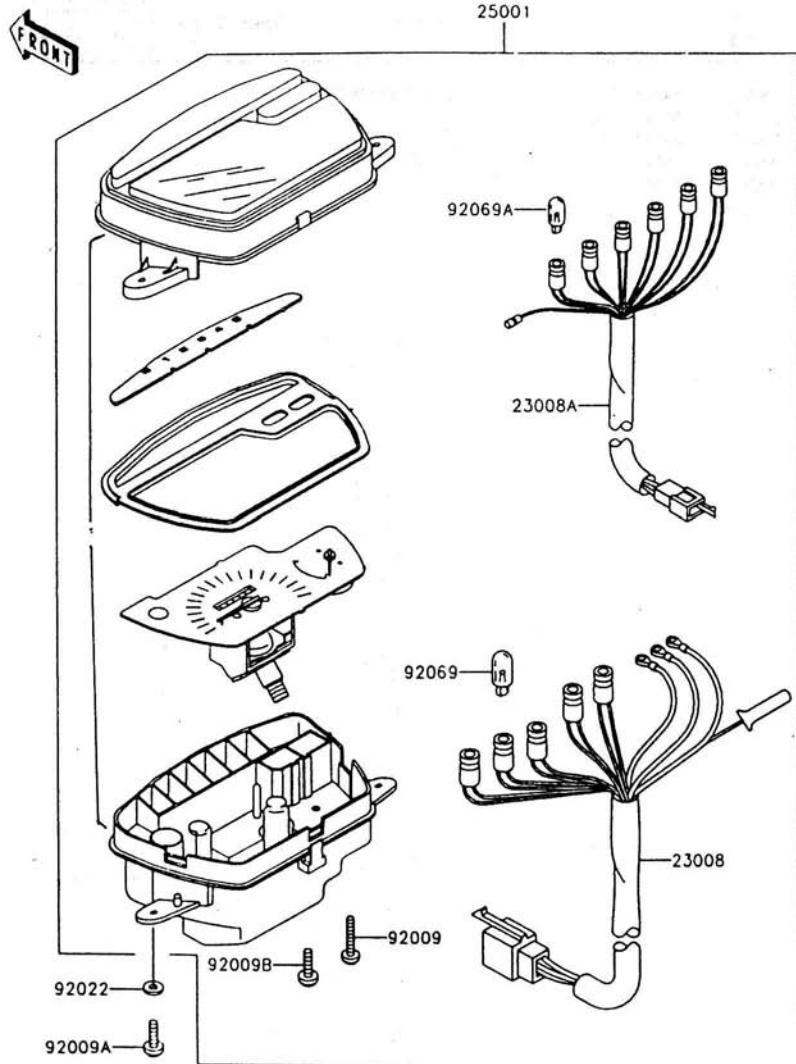
Ref. No.	Part No.	Description	Spec Code	Quantity - AH115	
				'93	A1
11048	11048 - 1080	BRACKET SEAT COVER		2	
13183	13183 - 1723	PLATE		1	
14090	14090 - 1321 - RD	COVER - SEAT LH, RED		1	
14090A	14090 - 1321 - BL	COVER - SEAT LH, BLUE		1	
14090B	14090 - 1321 - BK	COVER - SEAT LH, BLACK		1	
14090C	14090 - 1322 - RD	COVER - SEAT RH, RED		1	
14090D	14090 - 1322 - BL	COVER - SEAT RH, BLUE		1	
14090E	14090 - 1322 - BK	COVER - SEAT RH, BLACK		1	
27012	27012 - 1472	HOOK, SEAT		1	
53001	53001 - 1702	SEAT - ASSY, DUAL		1	
53003	53003 - 1273	LEATHER SEAT COVER		1	
53009	53009 - 1083	HINGE, SEAT		1	
92002	92002 - 1616	BOLT, SOCKET, 6 MM		2	
92009	92009 - 1158	SCREW, 4 X 16, BLACK		1	
92009A	92009 - 1288	SCREW, 6 X 14		6	
92015	92015 - 1233	NUT, FLANGED, 6 MM		3	
92015A	92015 - 1603	NUT, LOCK, 6 MM		1	
92022	92022 - 1143	WASHER, 6.5 X 16 X 1		6	
92027	92027 - 251	COLLAR, L = 13.1		3	
92144	92144 - 1120	SPRING		1	
92150	92150 - 1716	BOLT, 6 X 55		1	
92160	92160 - 1294	DAMPER		3	
92200	92200 - 1087	WASHER, 6.5 X 22 X 1.6		3	
220	220D0610	SCREW - PAN - CROS		1	

This catalog covers:
 '93 AH115-A1 Chassis

GRID NO.

E - 9

This grid covers:
 Meter



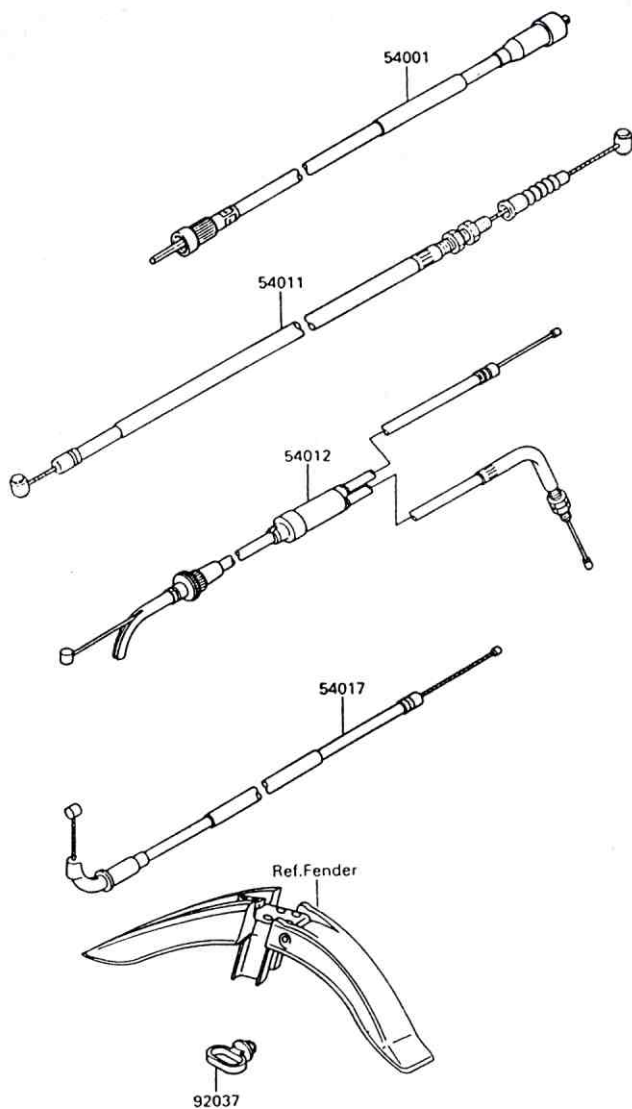
Ref. No.	Part No.	Description	Spec Code	Quantity-AH115	
				'93	A1
	14090 - 1317	COVER, METER CASE, UPP		1	
	14090 - 1318	COVER, METER HOUSING		1	
	14090 - 1320	COVER, METER, INNER		1	
23008	23008 - 1510	SOCKET - ASSY, METER		1	
23008A	23008 - 1511	SOCKET - ASSY, METER		1	
	23026 - 1156	LENS		1	
25001	25001 - 1921	METER - ASSY, KPH		1	
	28011 - 1136	METER, SPEED, KPH		1	
92009	92009 - 1293	SCREW, 3 X 22		3	
92009A	92009 - 1399	SCREW, TAPPING, 5 X 20		2	
92009B	92009 - 1648	SCREW, 4 X 10		2	
92022	92022 - 263	WASHER, 5.2 X 16 X 1.2		2	
92069	92069 - 1059	BULB, 12V 1.7W		5	
92069A	92069 - 1070	BULB, 12V 1.7W		6	

This catalog covers:
 '93 AH115-A1 Chassis

GRID NO.

E - 10

This grid covers:
 Cable



Ref. No.	Part No.	Description	Spec Code	Quantity- AH115			
				'93			
54001	54001 - 1188	CABLE - SPEEDMETER				1	
54011	54011 - 1328	CABLE - CLUTCH				1	
54012	54012 - 1461	CABLE - THROTTLE				1	
54017	54017 - 1150	CABLE - STARTER				1	
92037	92037 - 1459	CLAMP, CABLE				1	

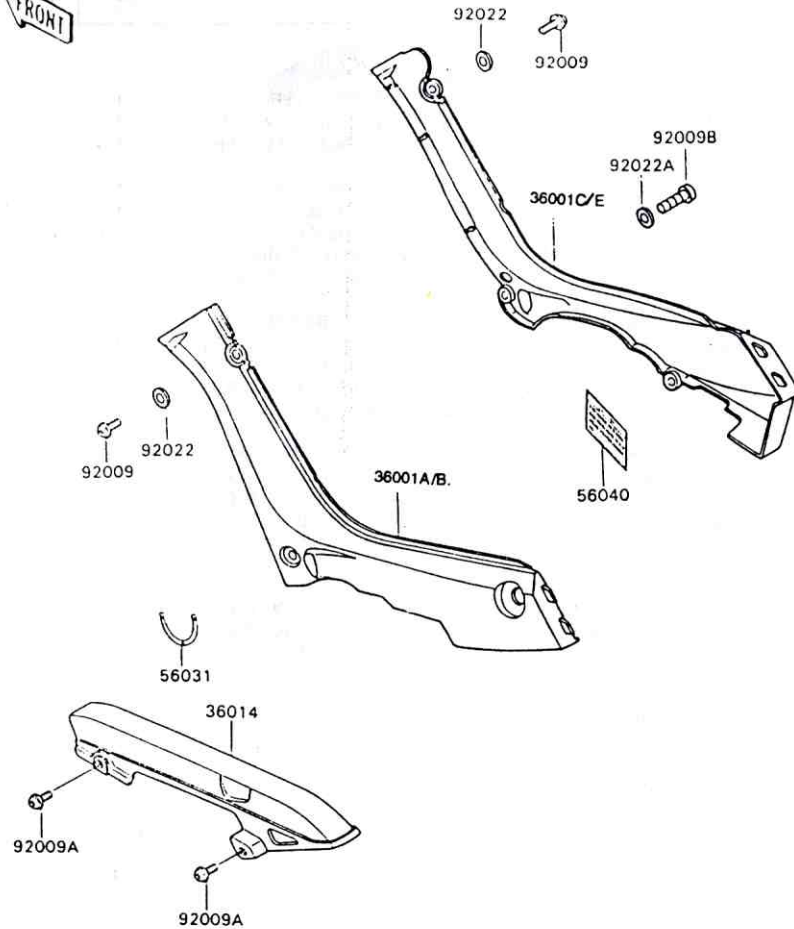
This catalog covers:
 '93 AH115-A1 Chassis

GRID NO.

E - 11

This grid covers:
 Side Cover/Chain Case

FRONT



Ref. No.	Part No.	Description	Spec Code	Quantity-AH115		
				'93	A1	
36001	36001 - 1505 - RD	COVER - SIDE, LH, RED		1		
36001A	36001 - 1505 - BL	COVER - SIDE, LH, BLUE		1		
36001B	36001 - 1505 - BK	COVER - SIDE, LH, BLACK		1		
36001C	36001 - 1506 - RD	COVER - SIDE, RH, RED		1		
36001D	36001 - 1506 - BL	COVER - SIDE, RH, BLUE		1		
36001E	36001 - 1506 - BK	COVER - SIDE, RH, BLACK		1		
36014	36014 - 1185	CASE - CHAIN		1		
56031	56031 - 1800	LABEL - MANUAL, FUEL TAP		1		
56040	56040 - 1336	LABEL - WARNING		1		
92009	92009 - 1287	SCREW, 6 X 14, WHITE		2		
92009A	92009 - 1288	SCREW, 6 X 14		2		
92009B	92009 - 1652	SCREW, 5 X 12		1		
92022	92022 - 1143	WASHER, 6.5 X 16 X 1		2		
92022A	92022 - 1521	WASHER, NYLON, 5.3 X 11.5 X 1.5		1		

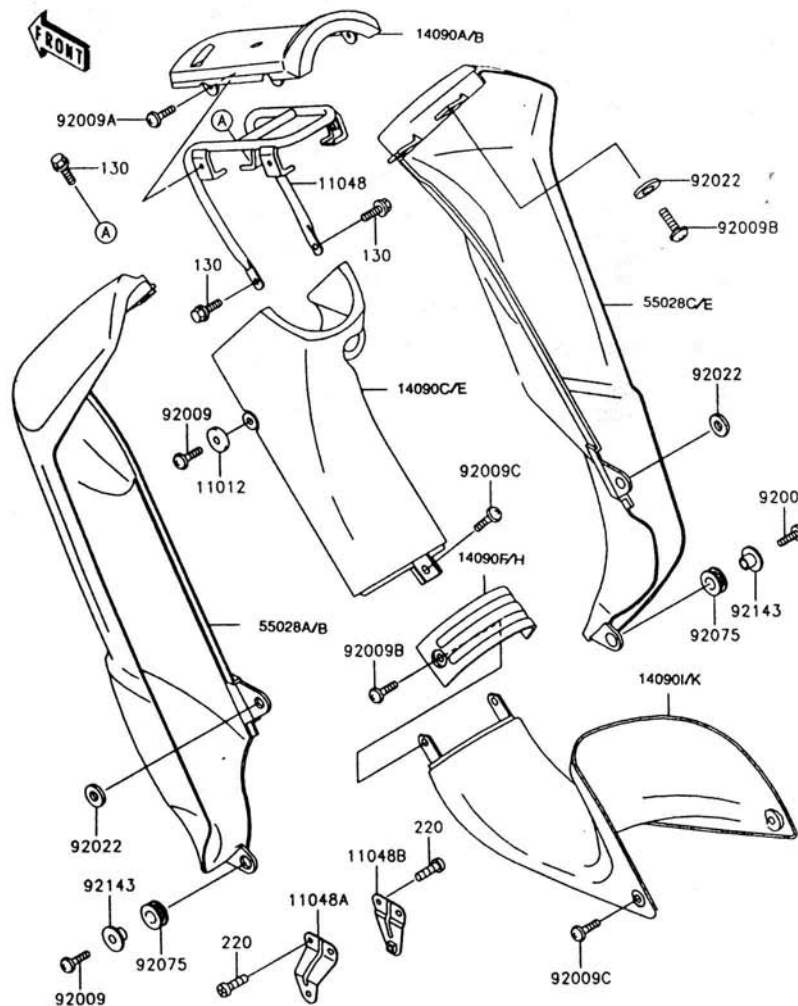
This catalog covers:
'93 AH115-A1 Chassis

GRID NO.

E - 12

This grid covers:

Leg Shield



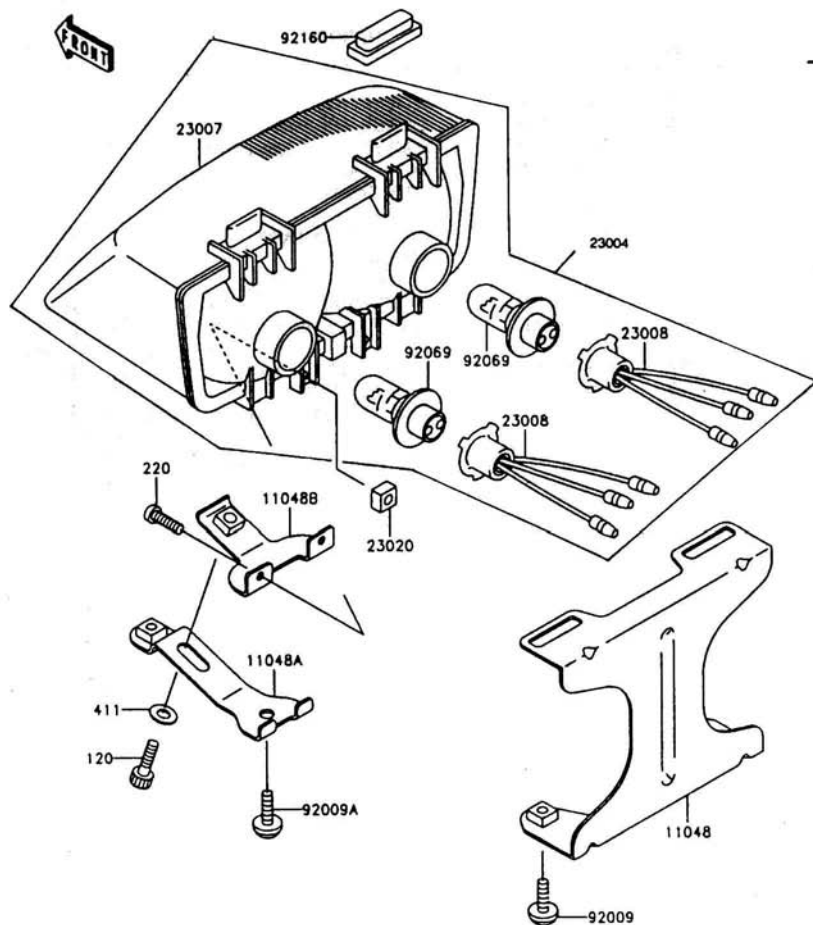
Ref. No.	Part No.	Description	Spec Code	Quantity- AH115	
				'93	A1
11012	11012 - 1786	CAP			2
11048	11048 - 1056	BRACKET, FRONT COVER			1
11048A	11048 - 1059	BRACKET, LEG SHIELD, LWR, LH			1
11048B	11048 - 1060	BRACKET, LEG SHIELD, LWR, RH			1
14090	14090 - 1307 - RD	COVER FRONT, RED			1
14090A	14090 - 1307 - BL	COVER FRONT, BLUE			1
14090B	14090 - 1307 - BK	COVER FRONT, BLACK			1
14090C	14090 - 1314 - RD	COVER LEG SHIELD FR, RED			1
14090D	14090 - 1314 - BL	COVER LEG SHIELD FR, BLUE			1
14090E	14090 - 1314 - BK	COVER LEG SHIELD FR, BLACK			1
14090F	14090 - 1315 - RD	COVER LEG SHIELD MIDDLE, RED			1
14090G	14090 - 1315 - BL	COVER LEG SHIELD MIDDLE, BLUE			1
14090H	14090 - 1315 - BK	COVER LEG SHIELD MIDDLE, BLACK			1
14090I	14090 - 1316 - RD	COVER LEG SHIELD RR, RED			1
14090J	14090 - 1316 - BL	COVER LEG SHIELD RR, BLUE			1
14090K	14090 - 1316 - BK	COVER LEG SHIELD RR, BLACK			1
55028	55028 - 1312 - RD	COWLING LEG SHIELD LH, RED			1
55028A	55028 - 1312 - BL	COWLING LEG SHIELD LH, BLUE			1
55028B	55028 - 1312 - BK	COWLING LEG SHIELD LH, BLACK			1
55028C	55028 - 1313 - RD	COWLING LEG SHIELD RH, RED			1
55028D	55028 - 1313 - BL	COWLING LEG SHIELD RH, BLUE			1
55028E	55028 - 1313 - BK	COWLING LEG SHIELD RH, BLACK			1
92009	92009 - 1111	SCREW, 6 X 18, WHITE			4
92009A	92009 - 1182	SCREW, 5 X 12, BLACK			4
92009B	92009 - 1287	SCREW, 6 X 14, WHITE			6
92009C	92009 - 1402	SCREW, 6 X 10			3
92022	92022 - 1143	WASHER, 6.5 X 16 X 1			6
92075	92075 - 1634	DAMPER			2
92143	92143 - 1016	COLLAR, L = 9.6			2
130	130J0612	BOLT - FLANGED			3
220	220C0612	SCREW - PAN - CROS, 6 X 12			4

This catalog covers:
 '93 AH115-A1 Chassis

GRID NO.

E - 13

This grid covers:
Head Lamp



Ref. No.	Part No.	Description	Spec Code	Quantity-AH115	
				'93	A1
11048	11048 - 1062	BRACKET, HEAD LAMP		1	
11048A	11048 - 1063	BRACKET, HEAD LAMP		1	
11048B	11048 - 1064	BRACKET, HEAD LAMP		1	
23004	23004 - 1359	HEAD LAMP		1	
23007	23007 - 1307	LENS-COMP, HEAD LAMP		1	
23008	23008 - 1507	SOCKET-ASSY, HEAD LAMP		2	
23020	23020 - 018	NUT, 4MM, FOCUS ADJUST		2	
92009	92009 - 1288	SCREW, 6 X 14		2	
92009A	92009 - 1402	SCREW, 6 X 10		1	
92069	92069 - 1092	BULB, 12V 18/18W		2	
92160	92160 - 1304	DAMPER		2	
120	120P0610	BOLT-SOCKET, 6 X 10		1	
220	220D0410	SCREW - PAN - CROS		2	
411	411B0600	WASHER - PLAIN, 6 MM		1	

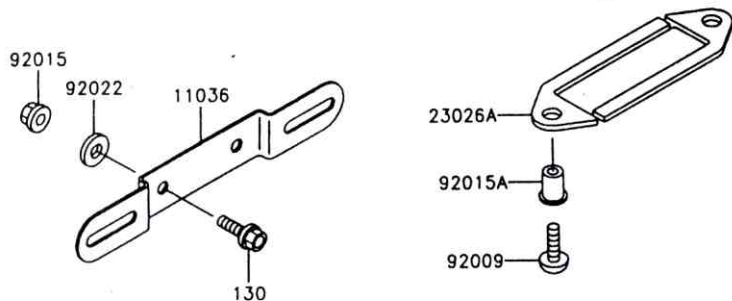
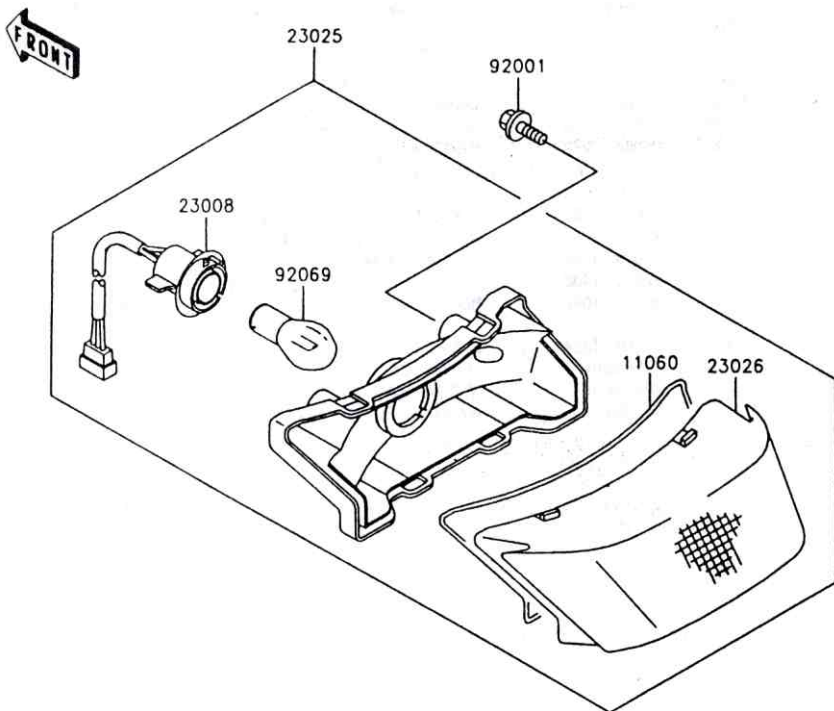
This catalog covers:
 '93 AH115-A1 Chassis

GRID NO.

E - 14

This grid covers:

Tail Lamp



Ref. No.	Part No.	Description	Spec Code	Quantity- AH115		
				'93		
				A1		
11036	11036 - 1040	BRACKET-A, LICENSE PLATE			1	
11060	11060 - 1338	GASKET, TAIL LAMP LENS			1	
23008	23008 - 1508	SOCKET - ASSY, TAIL LAMP			1	
23025	23025 - 1237	LAMP - TAIL			1	
23026	23026 - 1152	LENS, TAIL LAMP			1	
23026A	23026 - 1153	LENS, LICENSE LAMP			1	
92001	92001 - 1851	BOLT, 6 X 16			2	
92009	92009 - 1654	SCREW, 5 X 16			2	
92015	92015 - 1193	NUT, FLANGED, 6 MM			2	
92015A	92015 - 1757	NUT, WELL, 5 MM			2	
92022	92022 - 125	WASHER, 6.5 X 20 X 1.6			2	
92069	92069 - 1083	BULB, 12 V 18/5W			1	
130	130D0614	BOLT - FLANGED, 6 X 14			2	

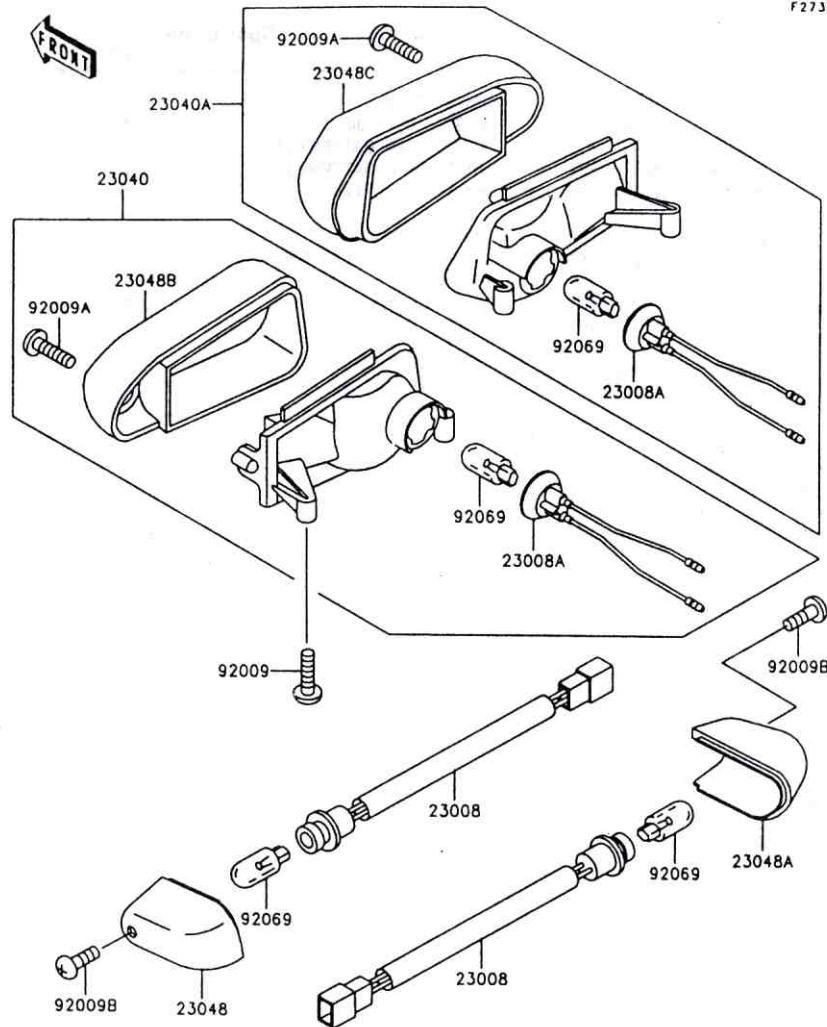
This catalog covers:
'93 AH115-A1 Chassis

GRID NO.

F - 3

This grid covers:
Turn Signal

F2730



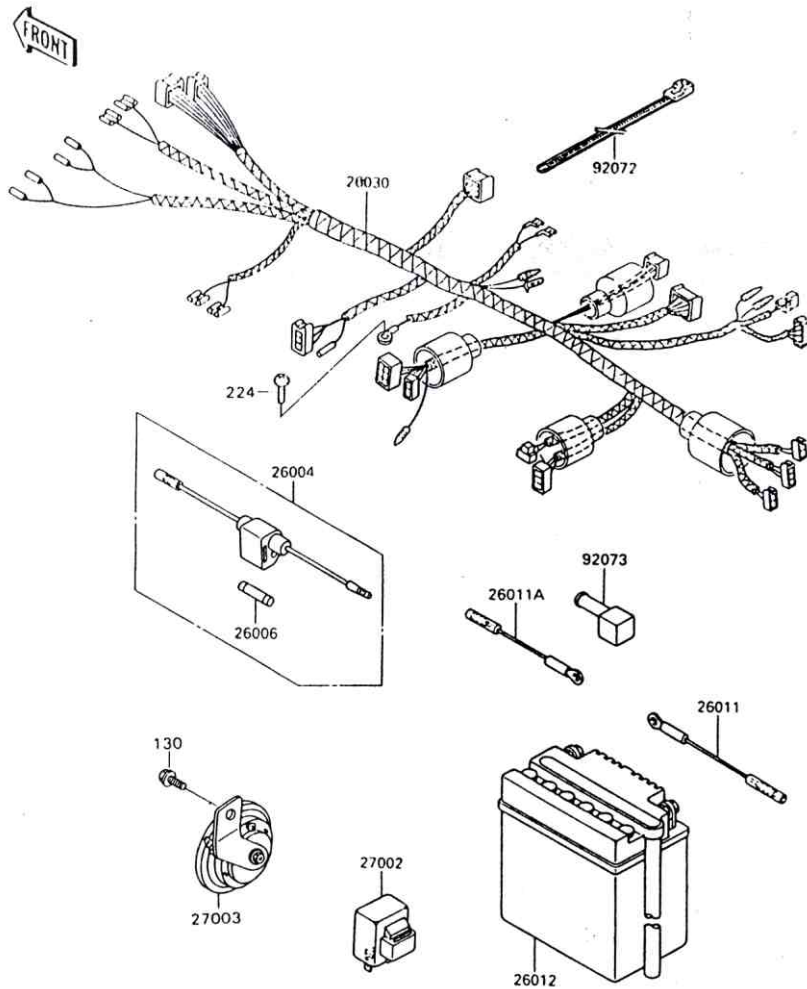
Ref. No.	Part No.	Description	Spec Code	Quantity-AH115	
				'93	A1
23008	23008 - 1483	SOCKET - ASSY, SIGNAL LAMP		2	
23008A	23008 - 1509	SOCKET - ASSY, SIGNAL LAMP		2	
23040	23040 - 1251	LAMP - SIGNAL, FR, LH		1	
23040A	23040 - 1252	LAMP - SIGNAL, FR, LH		1	
23048	23048 - 1137	LENS - SIGNAL LAMP, RR, LH		1	
23048A	23048 - 1138	LENS - SIGNAL LAMP, RR, RH		1	
23048B	23048 - 1150	LENS - SIGNAL LAMP, FR, LH		1	
23048C	23048 - 1151	LENS - SIGNAL LAMP, FR, RH		1	
92009	92009 - 1197	SCREW, TAPPING, 5 X 14		4	
92009A	92009 - 1340	SCREW, TAPPING, 4 X 14		2	
92009B	92009 - 1355	SCREW, 4 X 18		2	
92069	92069 - 1088	BULB, 12V 10W		4	

This catalog covers:
 '93 AH115-A1 Chassis

GRID NO.

F - 4

This grid covers:
 Electrical Equipment



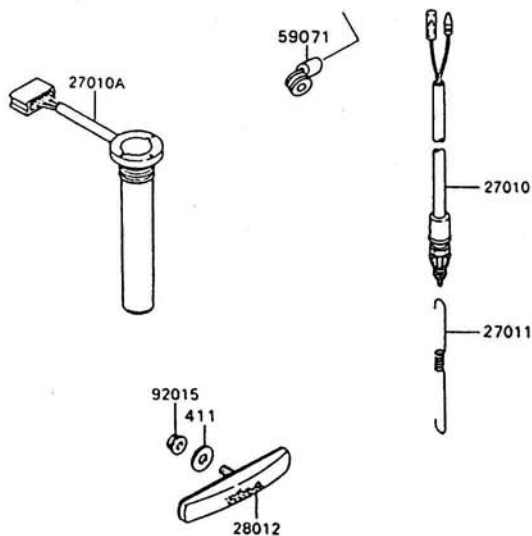
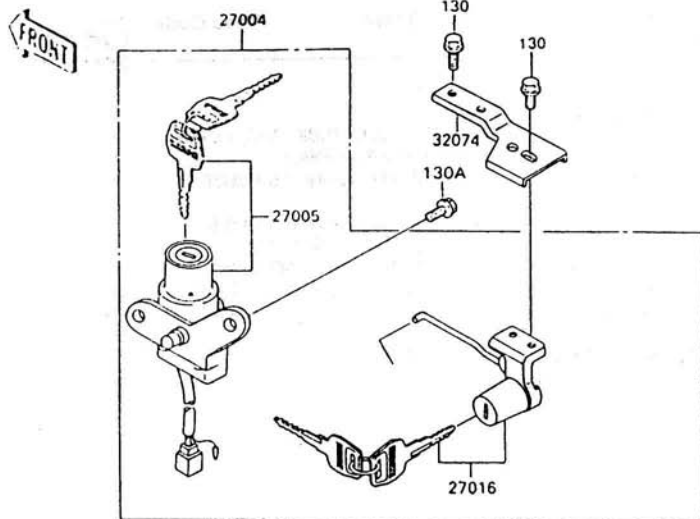
Ref. No.	Part No.	Description	Spec Code	Quantity- AH115			
				93			
				A1			
26004	26004 - 1088	FUSE - ASSY		1			
26006	26006 - 1071	FUSE, 15A, L = 30		2			
26011	26011 - 1436	WIRE - LEAD, BATTERY (-)		1			
26011A	26011 - 1501	WIRE - LEAD, BATTERY (+)		1			
26012	26012 - 1267	BATTERY, 12V 3AH		1			
26030	26030 - 1183	HARNES, MAIN		1			
27002	27002 - 1057	RELAY - ASSY, TURN SIGNAL		1			
27003	27003 - 1305	HORN		1			
92072	92072 - 1237	BAND, L = 250		1			
92073	92073 - 019	CAP, BATTERY		1			
130	130B0610	BOLT - FLANGED, 6 X 10		1			
224	224D0510	SCREW - PAN - WP - CROS, 5 X 10		1			

This catalog covers:
 '93 AH115-A1 Chassis

GRID NO.

F - 5

This grid covers:
 Ignition Switch



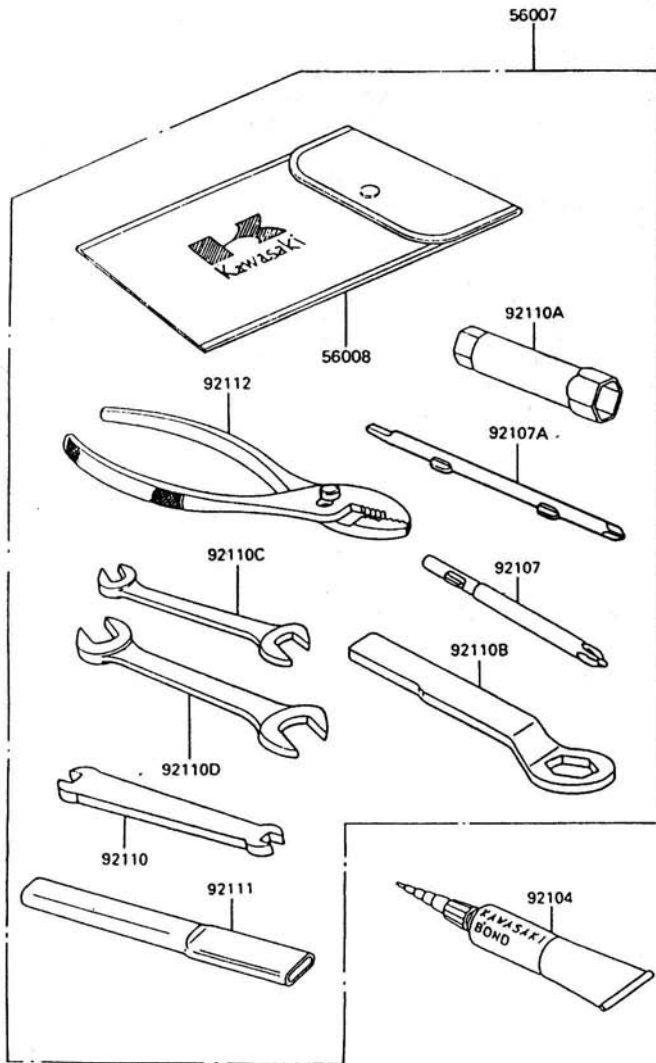
Ref. No.	Part No.	Description	Spec Code	Quantity-AH115	
				'93	A1
27004	27004 - 5450	SWITCH - ASSY		1	
27005	27005 - 1175	SWITCH - ASSY - IGNITION		1	
27010	27010 - 1298	SWITCH, REAR BRAKE		1	
27010A	27010 - 1324	SWITCH, OIL LEVEL		1	
27011	27011 - 011	SPRING, BRAKE LAMP SWITCH		1	
27016	27016 - 5209	LOCK - ASSY, SEAT		1	
28012	28012 - 1074	REFLECTOR - REFLEX		1	
32074	32074 - 1155	BRACKET - LOCK, SEAT		1	
59071	59071 - 1125	JOINT		1	
92015	92015 - 1193	NUT, FLANGED, 6 MM		1	
130	130C0610	BOLT - FLANGED, 6 X 10, BLACK		4	
130A	130D0614	BOLT - FLANGED, 6 X 14		2	
411	411B0600	WASHER - PLAIN, 6 MM		1	

This catalog covers:
 '93 AH115-A1 Chassis

GRID NO.

F-6

This grid covers:
 Tool



Ref. No.	Part No.	Description	Spec Code	Quantity - AH115			
				'93			
56007	56007 - 1368	TOOL - KIT				1	
56008	56008 - 1007	BAG, TOOL				1	
92104	92104 - 002	GASKET - LIQUID, TUBE, 100G, SILVER				1	
92107	92107 - 005	TOOL - DRIVER, #3 PHILIPS				1	
92107A	92107 - 1051	TOOL - DRIVER, #2 PHILIPS & SLOT				1	
92110	92110 - 1044	TOOL - WRENCH, SPOKE, 5.1 X 5.8				1	
92110A	92110 - 1113	TOOL - WRENCH, BOX, 21 MM				1	
92110B	92110 - 1148	TOOL - WRENCH, BOX END, 22 MM				1	
92110C	92110 - 1152	TOOL - WRENCH, OPEN END, 10 X 12				1	
92110D	92110 - 1153	TOOL - WRENCH, OPEN END, 14 X 17				1	
92111	92111 - 1051	TOLL - BAR, BOX END WRENCH				1	
92112	92112 - 003	TOOL - PLIERS				1	

This catalog covers:
 '93 AH115-A1 Chassis

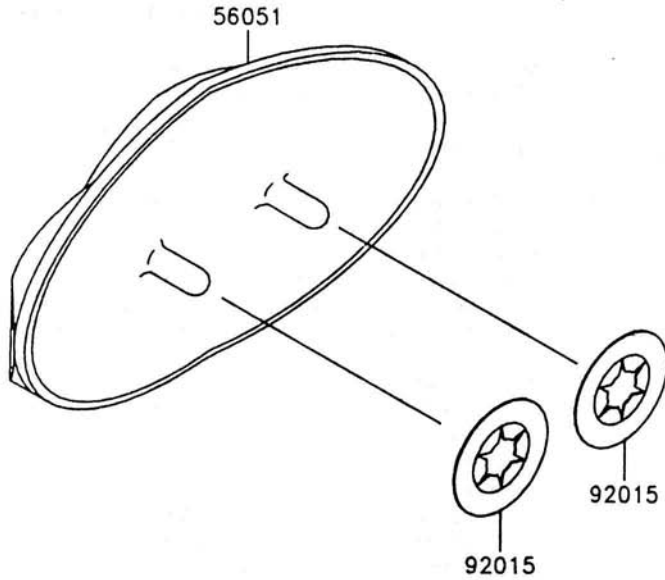
GRID NO.

F-7

This grid covers:
 Label



Ref. No.	Part No.	Description	Spec Code	Quantity-AH115			
				'93			
56051	56051 - 1013	MARK, FRONT COVER		1			
91015	92015 - 1919	NUT, SPEED, 4 MM		2			

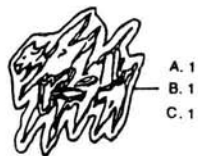
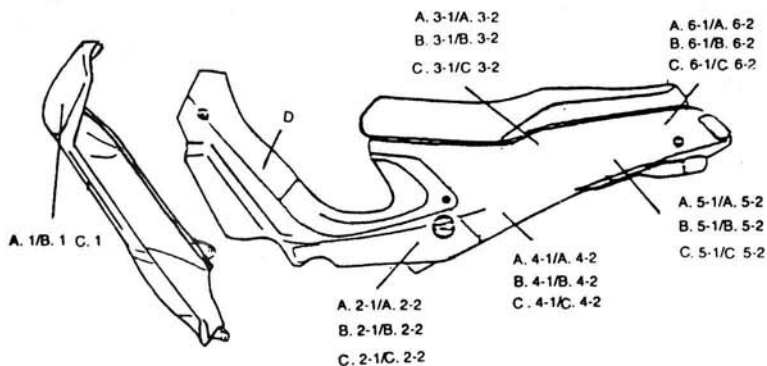


This catalog covers:
 '93 AH115-A1 Chassis

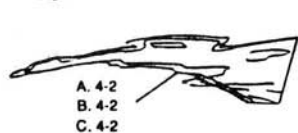
GRID NO.

F - 8

This grid covers:
 Emblem Group (Type B)



Kawasaki D



Ref. No.	Part No.	Description	Spec Code	Quantity - AH115	
				'93	
A. 1	56046 - K0270A - RD	PATTERN LEG SHIELD LH		1	RED
A. 2-1	56046 - K0271A - RD	PATTERN SIDECOVER LH		1	RED
A. 2-2	56046 - K0272A - RD	PATTERN SIDE COVER RH		1	RED
A. 3-1	56046 - K0273A - RD	PATTERN SEAT COVER FRONT UPPER LH		1	RED
A. 3-2	56046 - K0274A - RD	PATTERN SEAT COVER FRONT UPPER RH		1	RED
A. 4-1	56046 - K0275A - RD	PATTERN SEAT COVER FRONT LOWER LH		1	RED
A. 4-2	56046 - K0276A - RD	PATTERN SEAT COVER FRONT LOWER RH		1	RED
A. 5-1	56046 - K0277A - RD	PATTERN SEAT COVER REAR LH		1	RED
A. 5-2	56046 - K0278A - RD	PATTERN SEAT COVER REAR RH		1	RED
A. 6-1	56046 - K0279A - RD	PATTERN SEAT COVER REAR UPPER LH		1	RED
A. 6-2	56046 - K0280A - RD	PATTERN SEAT COVER REAR UPPER RH		1	RED
B. 1	56046 - K0270A - BK	PATTERN LEG SHIELD LH		1	BLACK
B. 2-1	56046 - K0271A - BK	PATTERN SIDECOVER LH		1	BLACK
B. 2-2	56046 - K0272A - BK	PATTERN SIDE COVER RH		1	BLACK
B. 3-1	56046 - K0273A - BK	PATTERN SEAT COVER FRONT UPPER LH		1	BLACK
B. 3-2	56046 - K0274A - BK	PATTERN SEAT COVER FRONT UPPER RH		1	BLACK
B. 4-1	56046 - K0275A - BK	PATTERN SEAT COVER FRONT LOWER LH		1	BLACK
B. 4-2	56046 - K0276A - BK	PATTERN SEAT COVER FRONT LOWER RH		1	BLACK
B. 5-1	56046 - K0277A - BK	PATTERN SEAT COVER REAR LH		1	BLACK
B. 5-2	56046 - K0278A - BK	PATTERN SEAT COVER REAR RH		1	BLACK
B. 6-1	56046 - K0279A - BK	PATTERN SEAT COVER REAR UPPER LH		1	BLACK
B. 6-2	56046 - K0280A - BK	PATTERN SEAT COVER REAR UPPER RH		1	BLACK
C. 1	56046 - K0270A - BL	PATTERN LEG SHIELD LH		1	BLUE
C. 2-1	56046 - K0271A - BL	PATTERN SIDECOVER LH		1	BLUE
C. 2-2	56046 - K0272A - BL	PATTERN SIDE COVER RH		1	BLUE
C. 3-1	56046 - K0273A - BL	PATTERN SEAT COVER FRONT UPPER LH		1	BLUE
C. 3-2	56046 - K0274A - BL	PATTERN SEAT COVER FRONT UPPER RH		1	BLUE
C. 4-1	56046 - K0275A - BL	PATTERN SEAT COVER FRONT LOWER LH		1	BLUE
C. 4-2	56046 - K0276A - BL	PATTERN SEAT COVER FRONT LOWER RH		1	BLUE
C. 5-1	56046 - K0277A - BL	PATTERN SEAT COVER REAR LH		1	BLUE
C. 5-2	56046 - K0278A - BL	PATTERN SEAT COVER REAR RH		1	BLUE
C. 6-1	56046 - K0279A - BL	PATTERN SEAT COVER REAR UPPER LH		1	BLUE
C. 6-2	56046 - K0280A - BL	PATTERN SEAT COVER REAR UPPER RH		1	BLUE
D.	56018 - K0105A	KAWASAKI EMBLEM		2	

This catalog covers:
'93 AH115-A1

GRID NO.

L - 14

This grid covers:
Numerical Parts Index

Part No.	Grid No.	Part No.	Grid No.	Part No.	Grid No.	Part No.	Grid No.	Part No.	Grid No.	Part No.	Grid No.
110G0622	D - 11	120S0616	B - 5	13088 - 1096	B - 8	13236 - 1249	B - 8	14090 - 1318	E - 9	187B0620	D - 7
11001 - 1393	B - 3	120S0625	E - 4	13089 - 1009	B - 8	13242 - 1309	B - 11	14090 - 1320	E - 9	21003 - 1250	C - 5
11004 - 1250	B - 3	12021 - 1096	B - 12	13091 - 1710	B - 10	13260 - 1309	B - 9	14090 - 1321 - RD	E - 8	21007 - 1253	C - 5
11005 - 1716	B - 3	12022 - 1070	B - 12	13091 - 1782	B - 8	13260 - 1322	B - 9	14090 - 1321 - BK	E - 8	21066 - 1086	C - 5
11009 - 1074	B - 14	130B0610	F - 4	13091 - 1787	B - 8	13270 - 1095	D - 4	14090 - 1321 - BL	E - 8	21119 - 1360	C - 6
11009 - 1250	B - 14	130C0610	F - 5	13091 - 1803	B - 10	13270 - 1122	B - 4	14090 - 1322 - RD	E - 8	21121 - 1229	C - 6
11009 - 1325	E - 5	130D0612	D - 7	13091 - 1829	E - 3	14002 - 1626	B - 12	14090 - 1322 - BL	E - 8	21130 - 1062	C - 6
11009 - 1326	E - 6	130D0614	E - 14	13095 - 1282	B - 8	14002 - 1627	B - 12	14090 - 1322 - BK	E - 8	220B0308	E - 6
11009 - 1656	E - 6	130D0614	F - 5	13095 - 1283	B - 8	14014 - 1115	B - 11	14090 - 1329	E - 7	220B0612	C - 4
11009 - 1992	B - 5	130J0610	D - 4	13116 - 1136	B - 8	14026 - 1187	B - 13	15001 - 1888	B - 14	220B0616	D - 7
11011 - 1404	B - 4	130J0612	D - 4	13127 - 1231	B - 9	14031 - 1281	B - 13	16002 - 004	B - 14	220B0625	B - 13
11012 - 1786	E - 12	130J0612	E - 12	13128 - 1191	B - 9	14032 - 1341	B - 13	16003 - 004	B - 14	220B0635	B - 12
11012 - 1789	D - 5	130P0630	B - 7	13129 - 1244	B - 9	14069 - 003	B - 12	16004 - 1062	B - 14	220B0635	B - 13
11012 - 1796	D - 6	130S0620	B - 11	13129 - 1246	B - 9	14073 - 1493	B - 4	16007 - 1044	B - 14	220B0660	B - 13
11012 - 1841	B - 4	13001 - 1418	B - 6	13129 - 1251	B - 9	14073 - 1495	B - 4	16008 - 011	B - 14	220C0425	E - 6
11012 - 1851	E - 5	13002 - 1018	B - 6	13129 - 1252	B - 9	14073 - 1564	B - 4	16009 - 1641	B - 14	220C0525	E - 4
11013 - 1159	B - 4	13008 - 1150	B - 6	13129 - 1338	B - 9	14079 - 1095	B - 12	15012 - 1058	B - 14	220C0540	E - 4
11013 - 1213	B - 4	13024 - 1094	B - 6	13129 - 1958	B - 9	14090 - 1306	B - 13	16013 - 005	B - 14	220C0612	E - 12
11036 - 1040	E - 14	13025 - 1118	B - 6	13139 - 1066	B - 9	14090 - 1307 - RD	E - 12	16014 - 1060	B - 14	220C0614	C - 3
11047 - 1707	D - 4	13027 - 1172	B - 6	13140 - 1109	B - 10	14090 - 1307 - BL	E - 12	16016 - 002	B - 14	220C0616	C - 3
11047 - 1764	B - 12	13029 - 1219	B - 6	13140 - 1110	B - 10	14090 - 1307 - BK	E - 12	16017 - 1357	B - 14	220D0410	E - 13
11047 - 1988	B - 13	13031 - 1358	B - 6	13140 - 1193	B - 10	14090 - 1311 - RD	D - 7	16021 - 1126	B - 14	220D0610	E - 8
11048 - 1052	D - 4	13033 - 1053	B - 6	13141 - 1179	B - 10	14090 - 1311 - BL	D - 7	16025 - 1192	B - 14	221B0414	E - 6
11048 - 1053	D - 4	13034 - 1023	B - 6	13144 - 1186	B - 9	14090 - 1311 - BK	D - 7	16029 - 002	B - 14	224D0510	F - 4
11048 - 1054	D - 4	13035 - 1068	B - 6	13151 - 1076	B - 11	14090 - 1312 - RD	D - 7	16030 - 1065	B - 14	23004 - 1359	E - 13
11048 - 1055	D - 4	13037 - 1466	B - 6	13156 - 1349	B - 11	14090 - 1312 - BL	D - 7	16031 - 1068	B - 14	23007 - 1307	E - 13
11048 - 1056	E - 12	13037 - 1472	B - 6	13157 - 004	B - 11	14090 - 1312 - BK	D - 7	16032 - 003	B - 14	23008 - 1483	F - 3
11048 - 1059	E - 12	13042 - 1084	E - 3	13161 - 1195	B - 11	14090 - 1313 - RD	D - 7	16033 - 009	B - 14	23008 - 1507	E - 13
11048 - 1060	E - 12	13044 - 5085	B - 6	13168 - 1400	E - 3	14090 - 1313 - BL	D - 7	16038 - 022	B - 14	23008 - 1508	E - 14
11048 - 1062	E - 13	13045 - 1053	E - 7	13183 - 1480	B - 8	14090 - 1313 - BK	D - 7	16065 - 1250	B - 12	23008 - 1509	F - 3
11048 - 1063	E - 13	13059 - 1151	B - 7	13183 - 1723	E - 8	14090 - 1314 - RD	E - 12	16082 - 1133	C - 4	23008 - 1510	E - 9
11048 - 1064	E - 13	13061 - 1422	B - 7	13183 - 1728	B - 13	14090 - 1314 - BL	E - 12	16115 - 1053	B - 13	23008 - 1511	E - 9
11048 - 1080	E - 8	13063 - 002	B - 7	13183 - 1979	B - 4	14090 - 1314 - BK	E - 12	16181 - 1066	B - 14	23020 - 018	E - 13
11060 - 1332	B - 3	13066 - 1070	B - 7	13194 - 1092	B - 8	14090 - 1315 - RD	E - 12	172G08120	B - 12	23025 - 1237	E - 14
11060 - 1334	B - 13	13070 - 1068	B - 14	132E0616	D - 5	14090 - 1315 - BL	E - 12	172G0822	B - 3	23026 - 1152	E - 14
11060 - 1338	E - 14	13070 - 1035	B - 7	132E0820	D - 6	14090 - 1315 - BK	E - 12	18090 - 1248	B - 5	23026 - 1153	E - 14
11060 - 1344	B - 13	13078 - 1057	B - 7	132G0614	C - 5	14090 - 1316 - RD	E - 12	18090 - 1297	B - 5	23026 - 1156	E - 9
11060 - 1345	B - 13	13086 - 1065	B - 8	132G0625	D - 7	14090 - 1316 - BL	E - 12	18140 - 1051	B - 5	23040 - 1251	F - 3
112G0520	B - 8	13087 - 1151	B - 8	13206 - 1058	B - 7	14090 - 1316 - BK	E - 12	183B0818	B - 12	23040 - 1252	F - 3
120P0610	E - 13	13088 - 1093	B - 8	13236 - 1241	B - 11	14090 - 1317	E - 9	183H0820	E - 4	23048 - 1137	F - 3

This catalog covers:
 '93 AH115-A1

GRID NO.

L - 15

This grid covers:
 Numerical Parts Index

Part No.	Grid No.	Part No.	Grid No.	Part No.	Grid No.	Part No.	Grid No.	Part No.	Grid No.	Part No.	Grid No.
23048 - 1138	F - 3	33001 - 1422	D - 5	41027 - 074	D - 9	43049 - 1064	D - 14	49035 - 1059	B - 3	56008 - 1007	F - 6
23048 - 1150	F - 3	33032 - 1168	D - 5	41028 - 073	D - 9	43049 - 1066	E - 6	49047 - 1009	B - 10	56018 - K0105A	F - 8
23048 - 1151	F - 3	33040 - 1057	D - 5	41029 - 1208	D - 9	43056 - 1056	D - 14	49047 - 1058	B - 10	56031 - 1800	E - 11
235B0510	B - 12	33040 - 1120	D - 5	41030 - 1123	D - 9	43057 - 1001	D - 14	49099 - 1485	B - 5	56040 - 1336	E - 11
235B0514	B - 11	34003 - 1383	D - 6	41032 - 024	D - 9	43058 - 1070	E - 5	510A3200	B - 6	56046 - K0270A - RD	F - 8
235C0612	B - 4	34003 - 1384	D - 6	41033 - 1980	B - 8	43059 - 1748	D - 13	51001 - 1385	E - 6	56046 - K0271A - RD	F - 8
236D0616	C - 6	34011 - 1156	D - 8	41038 - 1252	D - 10	43067 - 001	D - 13	51023 - 1180	E - 6	56046 - K0272A - RD	F - 8
25001 - 1921	E - 9	34019 - 1054	D - 8	41038 - 1253	D - 11	43082 - 1158	D - 14	51048 - 1052	E - 6	56046 - K0273A - RD	F - 8
26004 - 1088	F - 4	34024 - 1293	D - 8	41048 - 1020	D - 11	44005 - 1326	E - 5	51049 - 1096	E - 7	56046 - K0274A - RD	F - 8
26006 - 1071	F - 4	34025 - 005	D - 8	41050 - 012	D - 11	44006 - 1324	E - 5	52001 - 1088	E - 7	56046 - K0275A - RD	F - 8
26011 - 1436	F - 4	34028 - 1128	D - 6	41053 - 1036	D - 11	44013 - 1389	E - 5	52005 - 1005	B - 13	56046 - K0276A - RD	F - 8
26011 - 1501	F - 4	34028 - 1129	D - 6	41060 - 1133	D - 10	44022 - 1291	E - 5	52005 - 1100	E - 6	56046 - K0277A - RD	F - 8
26012 - 1267	F - 4	35004 - 1312 - RD	D - 7	41060 - 1134	D - 10	44026 - 1542	E - 5	53001 - 1702	E - 8	56046 - K0278A - RD	F - 8
26030 - 1183	F - 4	35004 - 1312 - BL	D - 7	41068 - 1090	D - 10	44026 - 1543	E - 5	53003 - 1273	E - 8	56046 - K0279A - RD	F - 8
27002 - 1057	F - 4	35004 - 1312 - BK	D - 7	41068 - 1353	D - 11	44037 - 1314	E - 5	54009 - 1083	E - 8	56046 - K0280A - RD	F - 8
27003 - 1365	F - 4	35023 - 1353	D - 7	41078 - 1083	D - 10	44041 - 040	E - 5	54001 - 1188	E - 10	56046 - K0270A - BK	F - 8
27004 - 5450	F - 5	35023 - 1364	D - 7	41080 - 1357	D - 14	44070 - 1250	E - 5	54011 - 1328	E - 10	56046 - K0271A - BK	F - 8
27005 - 1175	F - 5	36001 - 1505 - RD	E - 11	41085 - 003	D - 11	44070 - 1251	E - 5	54012 - 1461	E - 10	56046 - K0272A - BK	F - 8
27010 - 1170	D - 13	36001 - 1505 - BL	E - 11	411B0600	E - 13	45014 - 1552	D - 5	54017 - 1150	E - 10	56046 - K0273A - BK	F - 8
27010 - 1298	F - 5	36001 - 1505 - BK	E - 11	411B0600	F - 5	45016 - 003	D - 5	550D2015	D - 6	56046 - K0274A - BK	F - 8
27010 - 1324	F - 5	36001 - 1506 - RD	E - 11	411B0800	E - 6	46001 - 1304	E - 3	550D2015	D - 12	56046 - K0275A - BK	F - 8
27011 - 011	F - 5	36001 - 1506 - BL	E - 11	42010 - 005	D - 11	46019 - 1080	E - 3	550D2018	D - 12	56046 - K0276A - BK	F - 8
27012 - 1472	E - 8	36001 - 1506 - BK	E - 11	42014 - 016	D - 11	46075 - 1028	E - 3	550D3025	D - 10	56046 - K0277A - BK	F - 8
27016 - 5209	F - 5	36014 - 1185	E - 11	42016 - 1017	D - 11	46076 - 1187	E - 3	550D3025	D - 11	56046 - K0278A - BK	F - 8
28011 - 1136	E - 9	39021 - 1052	E - 3	42036 - 1299	D - 11	46091 - 1600	E - 3	550D3030	D - 8	56046 - K0280A - BK	F - 8
28012 - 1074	F - 5	39110 - 1107	B - 11	42039 - 1129	D - 11	46091 - 1601	E - 3	55020 - 1496	D - 5	56046 - K0270A - BL	F - 8
311G0600	B - 11	39130 - 1070	B - 8	42041 - 1416	D - 11	46092 - 1158	D - 13	55028 - 1312 - RD	E - 12	56046 - K0271A - BL	F - 8
314B1200	D - 5	39156 - 1378	D - 4	43001 - 1327	D - 12	46092 - 1176	E - 3	55028 - 1312 - BL	E - 12	56046 - K0272A - BL	F - 8
315B1000	D - 11	410B0600	D - 7	43007 - 1174	D - 12	46098 - 016	D - 3	55028 - 1312 - BK	E - 12	56046 - K0273A - BL	F - 8
315G1200	D - 6	410B1200	D - 10	43011 - 1158	D - 12	480J1600	B - 7	55008 - 1313 - RD	E - 12	56046 - K0274A - BL	F - 8
317B0800	D - 12	410B1200	D - 11	43012 - 001	D - 12	480J1700	B - 9	55028 - 1313 - BL	E - 12	56046 - K0275A - BL	F - 8
317B0800	E - 6	410F1200	D - 5	43015 - 1533	D - 13	480J1800	B - 11	55028 - 1313 - BK	E - 12	56046 - K0276A - BL	F - 8
320G1200	D - 10	41002 - 1934	D - 9	43020 - 1098	D - 13	481J3700	D - 10	551A0312	B - 6	56046 - K0277A - BL	F - 8
32065 - 1275	D - 7	41002 - 1935	D - 9	43022 - 1010	D - 13	482L5000	B - 7	56001 - 1435 - BL	E - 3	56046 - K0278A - BL	F - 8
32074 - 1155	F - 5	41022 - 1159	D - 9	43026 - 1074	D - 13	49006 - 1083	B - 14	56001 - 1435 - RD	E - 3	56046 - K0279A - BL	F - 8
32098 - 1099	D - 4	41022 - 1160	D - 9	43028 - 1061	D - 13	49006 - 1088	D - 14	56001 - 1435 - BK	E - 3	56046 - K0280A - BL	F - 8
32109 - 1234 - RD	D - 4	41023 - 1093	D - 9	43034 - 1016	D - 13	49006 - 1203	B - 14	56001 - 1436 - BL	E - 3	56051 - 1013	F - 7
32109 - 1234 - BL	D - 4	41023 - 1094	D - 9	43041 - 1505	D - 14	49006 - 1223	B - 4	56001 - 1436 - RD	E - 3	59026 - 1123	C - 6
32109 - 1234 - BK	D - 4	41025 - 1245	D - 9	43048 - 1066	D - 14	49006 - 1242	D - 14	56001 - 1436 - BK	E - 3	59051 - 1267	B - 7
32160 - 1285	D - 3	41025 - 1279	D - 9	43049 - 1063	D - 14	49016 - 1044	D - 13	56007 - 1368	F - 6	59071 - 1125	F - 5

This catalog covers:
'93 AH115-A1

GRID NO.

L - 16

This grid covers:
Numerical Parts Index

Part No.	Grid No.	Part No.	Grid No.	Part No.	Grid No.	Part No.	Grid No.	Part No.	Grid No.	Part No.	Grid No.
59071 - 1127	B - 4	92002 - 1829	D - 5	92015 - 1183	B - 5	92022 - 263	E - 9	92045 - 1294	B - 13	92059 - 1429	B - 14
59441 - 1104 - RD	E - 3	92002 - 1888	D - 13	92015 - 1188	D - 8	92022 - 304	B - 13	92046 - 1034	B - 12	92059 - 1904	C - 4
59441 - 1104 - BL	E - 3	92006 - 1084	B - 14	92015 - 1191	E - 3	92022 - 315	B - 7	92046 - 1148	B - 13	92063 - 068	C - 3
59441 - 1104 - BK	E - 3	92009 - 1014	B - 12	92015 - 1193	E - 14	92026 - 1037	B - 9	92046 - 1223	B - 8	92063 - 094	C - 3
59441 - 1105 - RD	E - 3	92009 - 1104	B - 7	92015 - 1193	F - 5	92026 - 1217	B - 11	92046 - 1224	B - 8	92063 - 1029	C - 3
59441 - 1105 - BL	E - 3	92009 - 1111	E - 12	92015 - 1197	E - 3	92026 - 1411	B - 7	92046 - 1225	B - 8	92063 - 1031	C - 3
59441 - 1105 - BK	E - 3	92009 - 1134	E - 3	92015 - 1223	D - 4	92026 - 1415	B - 8	92047 - 011	D - 3	92063 - 1035	C - 3
600A 0800	B - 7	92009 - 1158	E - 8	92015 - 1233	D - 13	92026 - 1430	B - 6	92048 - 006	D - 3	92064 - 1018	C - 3
600A 0800	D - 3	92009 - 1182	E - 12	92015 - 1233	E - 8	92027 - 1653	B - 5	92048 - 008	D - 3	92064 - 020	C - 3
601A6201	B - 12	92009 - 1197	F - 3	92015 - 1364	D - 5	92027 - 1933	D - 7	92048 - 1074	B - 8	92064 - 021	C - 3
601A6201	B - 12	92009 - 1256	B - 4	92015 - 1406	D - 4	92027 - 251	E - 8	92048 - 1096	E - 5	92064 - 032	C - 3
601A6203U	B - 12	92009 - 1287	E - 11	92015 - 1406	D - 5	92033 - 1050	B - 6	92049 - 002	B - 12	92064 - 040	C - 3
601B6004G	D - 11	92009 - 1287	E - 12	92015 - 1502	E - 4	92033 - 1060	B - 9	92049 - 1048	B - 12	92065 - 058	B - 12
601B6201G	D - 10	92009 - 1288	D - 7	92015 - 1603	E - 8	92033 - 1160	D - 10	92049 - 1173	D - 10	92066 - 1064	C - 3
601B62012G	D - 11	92009 - 1288	E - 8	92015 - 1712	B - 6	92033 - 1240	B - 6	92049 - 1398	B - 12	92066 - 1364	D - 4
601B6301G	D - 10	92009 - 1288	E - 11	92015 - 1757	E - 14	92033 - 1285	E - 5	92049 - 1410	B - 12	92066 - 1370	B - 12
601B63012G	D - 11	92009 - 1288	E - 13	92015 - 1870	D - 11	92037 - 1173	C - 6	92049 - 1412	E - 5	92066 - 1376	B - 4
610A0406	B - 10	92009 - 1293	E - 9	92015 - 1900	D - 3	92037 - 1260	C - 4	92049 - 1417	B - 12	92066 - 1386	D - 4
670B1504	E - 6	92009 - 1340	F - 3	92015 - 1901	D - 3	92037 - 1272	B - 14	92050 - 009	D - 11	92069 - 1059	E - 9
670B2016	B - 4	92009 - 1355	F - 3	92015 - 1908	B - 6	92037 - 1326	B - 4	92050 - 059	D - 10	92069 - 1070	E - 9
92001 - 082	D - 11	92009 - 1399	E - 9	92015 - 1908	B - 8	92037 - 1459	D - 13	92051 - 003	B - 13	92069 - 1083	E - 14
92001 - 1091	E - 6	92009 - 1402	E - 12	92015 - 1919	F - 7	92037 - 1459	E - 10	92051 - 005	B - 12	92069 - 1088	F - 3
92001 - 1455	B - 12	92009 - 1402	E - 13	92022 - 1143	E - 8	92037 - 1568	B - 4	92051 - 005	B - 13	92069 - 1092	E - 13
92001 - 1583	E - 6	92009 - 1403	B - 5	92022 - 1143	E - 11	92037 - 1601	B - 12	92055 - 004	D - 11	92070 - 1202	C - 6
92001 - 1705	E - 6	92009 - 1428	E - 3	92022 - 1143	E - 12	92037 - 1601	C - 4	92055 - 012	B - 13	92070 - 1203	C - 6
92001 - 1728	D - 13	92009 - 1444	D - 7	92022 - 1187	B - 14	92037 - 1678	B - 14	92055 - 022	B - 6	92072 - 045	D - 4
92001 - 1729	D - 13	92009 - 1458	D - 13	92022 - 125	D - 7	92037 - 1712	B - 4	92055 - 044	B - 14	92072 - 1237	F - 4
92001 - 1837	D - 14	92009 - 1522	C - 4	92022 - 125	E - 14	92037 - 187	C - 4	92055 - 055	C - 4	92072 - 1257	D - 4
92001 - 1851	E - 14	92009 - 1605	E - 3	92022 - 1317	B - 5	92043 - 039	D - 12	92055 - 091	B - 11	92073 - 019	F - 4
92001 - 1862	D - 7	92009 - 1648	E - 9	92022 - 1510	D - 10	92043 - 064	D - 12	92055 - 1078	B - 14	92075 - 015	B - 5
92001 - 1862	E - 6	92009 - 1652	E - 11	92022 - 1511	D - 10	92043 - 1109	B - 7	92055 - 1112	E - 6	92075 - 1020	D - 5
92001 - 1910	B - 5	92009 - 1654	E - 14	92022 - 1514	D - 6	92043 - 1220	D - 10	92055 - 1235	B - 9	92075 - 1268	B - 3
92001 - 1926	E - 7	92009 - 1670	E - 3	92022 - 1521	E - 11	92043 - 1263	B - 12	92055 - 1325	B - 5	92075 - 1368	B - 3
92001 - 1951	D - 14	92009 - 1677	D - 4	92022 - 1561	E - 4	92043 - 1264	B - 3	92055 - 1417	B - 14	92075 - 1634	D - 7
92002 - 1105	B - 12	92009 - 1694	C - 6	92022 - 1588	D - 12	92043 - 1385	B - 11	92055 - 1419	E - 6	92075 - 1634	E - 12
92002 - 1323	D - 13	92015 - 042	D - 12	92022 - 1659	B - 4	92043 - 1416	D - 14	92055 - 1522	E - 5	92075 - 1673	B - 3
92002 - 1570	B - 12	92015 - 1125	B - 11	92022 - 1698	B - 14	92043 - 1464	D - 6	92055 - 1525	B - 8	92075 - 1855	B - 13
92002 - 1616	E - 8	92015 - 1143	B - 5	92022 - 1705	D - 11	92045 - 1123	B - 8	92057 - 1363	D - 11	92075 - 1856	B - 13
92002 - 1778	C - 5	92015 - 1151	B - 3	92022 - 1938	B - 14	92045 - 1171	B - 12	92058 - 1014	D - 11	92077 - 1113 - RD	E - 6
92002 - 1815	B - 13	92015 - 1180	D - 6	92022 - 183	E - 6	92045 - 1293	B - 12	92059 - 1395	B - 14	92077 - 1113 - BL	E - 6

This catalog covers:
 '93 AH115-A1

GRID NO.

L - 17

This grid covers:
 Numerical Parts Index

Part No.	Grid No.	Part No.	Grid No.	Part No.	Grid No.	Part No.	Grid No.	Part No.	Grid No.	Part No.	Grid No.
92077 - 1113 - BK	E - 6	92144 - 1482	B - 8	92200 - 1165	E - 4						
92081 - 020	B - 7	92144 - 1556	B - 8	92200 - 1172	C - 3						
92081 - 1153	C - 3	92144 - 1557	D - 14	92200 - 1175	D - 12						
92081 - 122	B - 7	92144 - 1590	B - 11	92200 - 1186	B - 8						
92081 - 1276	B - 7	92144 - 1705	B - 8								
92081 - 1766	D - 11	92144 - 1724	D - 8								
92081 - 1947	D - 12	92150 - 1180	C - 6								
92087 - 1051	D - 10	92150 - 1406	B - 13								
92092 - 005	D - 5	92150 - 1433	B - 10								
92093 - 1352	B - 4	92150 - 1545	D - 8								
92093 - 1356	E - 5	92150 - 1626	B - 11								
92104 - 002	F - 6	92150 - 1665	B - 13								
92107 - 005	F - 6	92150 - 1667	D - 12								
92107 - 1051	F - 6	92150 - 1668	D - 12								
92110 - 1044	F - 6	92150 - 1670	D - 4								
92110 - 1113	F - 6	92150 - 1671	D - 4								
92110 - 1148	F - 6	92150 - 1682	E - 4								
92110 - 1152	F - 6	92150 - 1695	E - 5								
92110 - 1153	F - 6	92150 - 1716	E - 8								
92111 - 1051	F - 6	92150 - 1719	E - 4								
92112 - 003	F - 6	92160 - 1031	B - 3								
92143 - 1016	D - 7	92160 - 1116	B - 5								
92143 - 1016	E - 12	92160 - 1292	D - 4								
92143 - 1193	B - 9	92160 - 1294	E - 8								
92143 - 1298	B - 11	92160 - 1304	E - 13								
92143 - 1351	E - 4	92160 - 1312	B - 13								
92143 - 1388	D - 10	92160 - 1313	D - 12								
92143 - 1389	D - 10	92160 - 1314	D - 6								
92143 - 1519	D - 5	92160 - 1440	D - 5								
92143 - 1533	D - 11	92160 - 1457	E - 4								
92143 - 1590	D - 11	92170 - 1215	B - 12								
92143 - 1661	B - 8	92170 - 1361	B - 13								
92143 - 1663	B - 8	92190 - 1222	B - 4								
92143 - 1665	B - 6	92190 - 1223	B - 12								
92143 - 1666	B - 8	92190 - 1224	C - 4								
92144 - 1120	E - 8	92190 - 1225	C - 4								
92144 - 1245	B - 11	92190 - 1392	C - 3								
92144 - 1271	C - 3	92190 - 1393	C - 4								
92144 - 1339	B - 11	92200 - 1087	E - 8								
92144 - 1371	B - 11	92200 - 1114	B - 11								