



G7 100 - A7

Korrektaminos

G7 100

Catálogo de Partes



G7 100-A7
For Colombia Market

Motorcycle
Parts Catalog

'87 G7100-A7 (CL) 99917-5247-01

PREFACIO

Es nuestro placer presentarles a ustedes el Catálogo de Partes.

Este Catálogo ha sido especialmente diseñado para ayudarle en la selección de las partes correctas con el fin de mantener el vehículo en las mejores condiciones.

Los repuestos originales están sujetos a un exigente estándar de control de calidad, por lo tanto es necesario que usted sólo use repuestos originales.

En nuestro constante esfuerzo para mejorar la eficiencia y desempeño de su vehículo, las especificaciones, diagramas y número de partes pueden cambiar sin previo aviso. Consecuentemente las descripciones de los repuestos en este Catálogo pueden no ser las finales y definitivas.

Las alteraciones y modificaciones que ocurran en la impresión de este catálogo, serán informadas a nuestra red, a través de circulares de Servicio. Es requisito que usted actualice su Catálogo y haga las correcciones necesarias, una vez reciba dichas circulares. Lo anterior le asegurará un rápido y adecuado despacho de sus partes, pues las órdenes están siendo diligenciadas con las referencias más actualizadas.

En caso de necesitar asistencia técnica, comunicarse con el Distribuidor Autorizado o llamar al Departamento de Servicios Auteco-Kawasaki.

This catalog covers:
 '87 KH100-A7 Engine

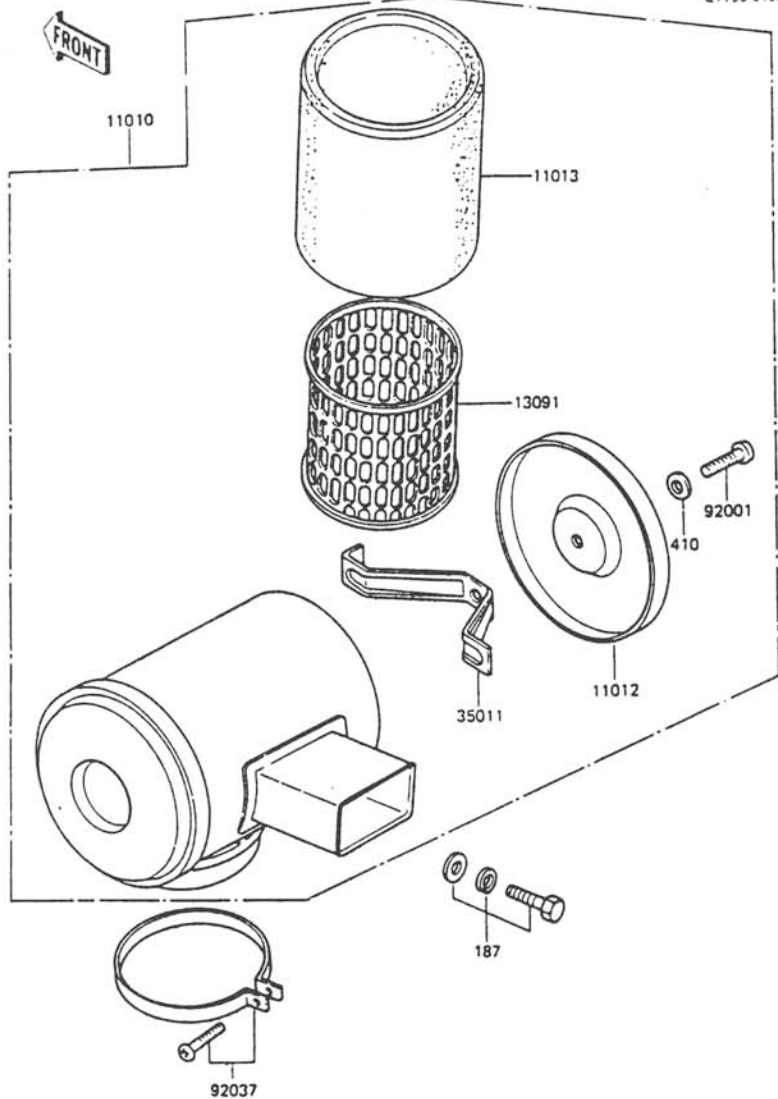
GRID NO.

B-4

This grid covers:

Air Filter

E1130-0133



Ref. No.	Part No.	Description	Spec Code	Quantity- KH100	
				'87	A7
11010	11010-062-10	FILTER-ASSY-AIR		1	
11012	11012-1045	CAP,AIR FILTER,RH		1	
11013	11013-1012	ELEMENT-AIR FILTER		1	
13091	13091-1025	HOLDER,AIR FILTER ELEMENT		1	
35011	35011-1016	STAY,AIR FILTER ELEMENT		1	
92001	92001-1111	BOLT,AIR FILTER CAP		1	
92037	92037-068	CLAMP		1	
187	187B0612	BOLT-UPSET-WSP		1	
410	410B0600	WASHER-PLAIN-SMALL,6MM		1	

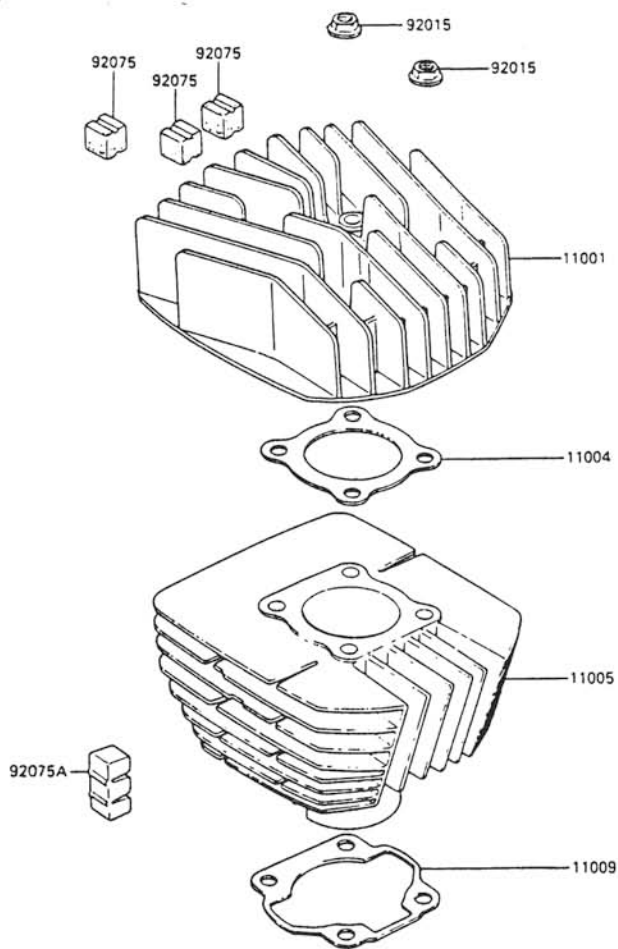
This catalog covers:
 '87 KH100-A7 Engine

GRID NO.

B-3

This grid covers:
 Cylinder Head/Cylinder

E1111-0039



Ref. No.	Part No.	Description	Spec Code	Quantity - KH100	
				'87	A7
11001	11001-1101	HEAD-CYLINDER			1
11004	11004-033	GASKET-HEAD,CYLINDER			1
11005	11005-1027	CYLINDER-ENGINE,BLACK			1
11009	11009-031	GASKET,CYLINDER BASE			1
92015	92015-1022	NUT,FLANGED,8MM			4
92075	92075-1339	DAMPER,CYLINDER HEAD			8
92075A	92075-170	DAMPER,CYLINDER			2

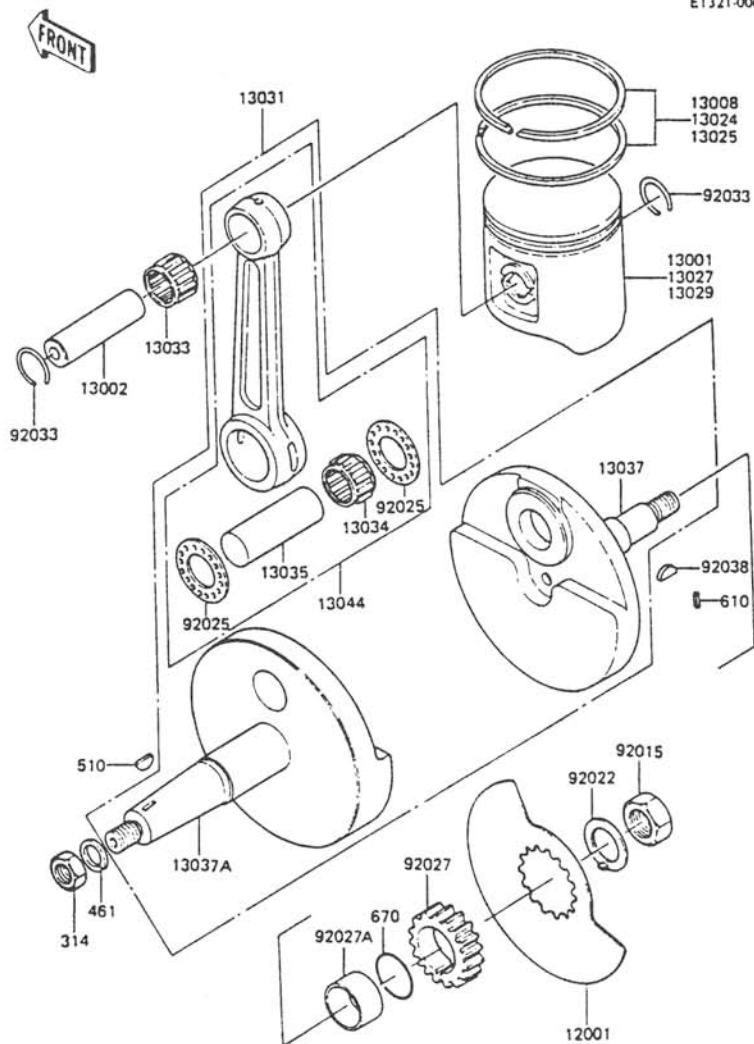
This catalog covers:
'87 KH100-A7 Engine

GRID NO.

B-6

This grid covers:
Crankshaft/Piston

E1321-0061



Ref. No.	Part No.	Description	Spec Code	Quantity- KH100	
				'87	A7
12001	12002-U30	VALVE-ROTARY		1	
13001	13001-1065	PISTON-ENGINE,STD		1	
13002	13002-003	PIN-PISTON		1	
13008	13008-5043	RING-SET-PISTON,STD		1	
13024	13024-5021	RING-SET-PISTON LL,0/S 1.00		1	
13025	13025-5021	RING-SET-PISTON L,0/S 0.50		1	
13027	13027-1035	PISTON-ENGINE LL,0/S,1.00		1	
13029	13029-1036	PISTON-ENGINE L,0/S,0.50		1	
13031	13036-043	CRANKSHAFT-COMP		1	
13033	13033-030	BEARING-NEEDLE,KTV141817		1	
13034	13034-034	BEARING-NEEDLE,KT192814		1	
13035	13035-025	PIN-CRANK		1	
13037	13037-1135	CRANKSHAFT,RH		1	
13037A	13037-1136	CRANKSHAFT,LH		1	
13044	13044-5015	SET-CONNECTING ROD		1	
92015	92015-006	NUT,12MM		1	
92022	92024-U03	WASHER,CLAW,12,5x25x0,8		1	
92025	92025-047	SHIM,T=1,0		2	
92027	92027-1245	COLLAR,ROTARY VALVE		1	
92027A	92027-285	COLLAR,20x25x9,5		1	
92033	92036-003	RING-SNAP,PISTON PIN		2	
92038	92038-003	KEY,WOODRUFF		1	
314	314B1000	NUT-HEX-FINE,10MM		1	
461	461E1000	WASHER-SPRING,10MM		1	
510	510A3200	KEY-WOODRUFF		1	
610	610A0410	ROLLER,4x10		1	
670	670B2016	O RING,16MM		1	

This catalog covers:
'87 KH100-A7 Engine

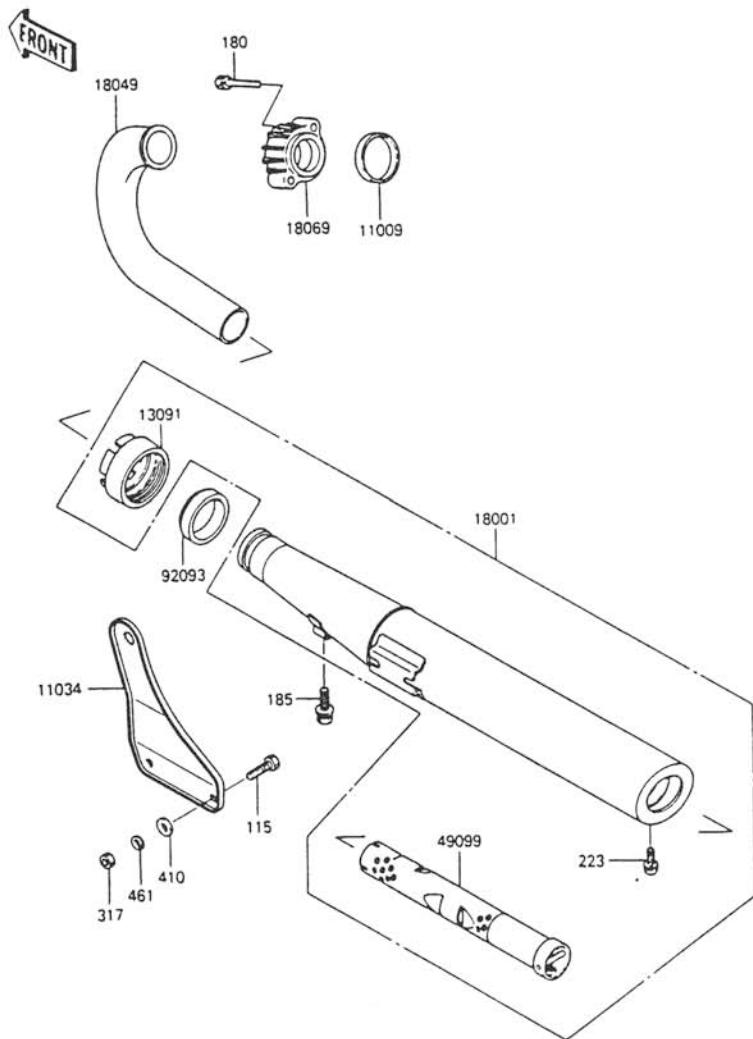
GRID NO.

B-5

This grid covers:

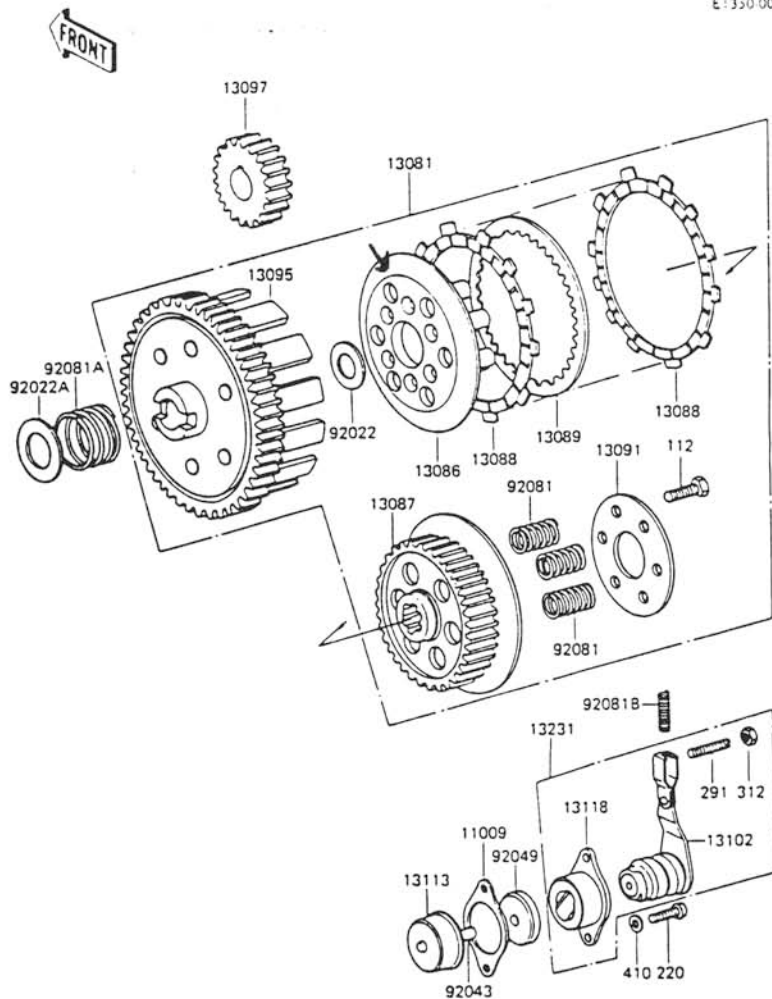
Muffler

E1140-0240



Ref. No.	Part No.	Description	Spec Code	Quantity- KH100	
				'87	A7
11009	11009-1199	GASKET, EXHAUST PIPE		1	
11034	18061-040	BRACKET, MUFFLER		1	
13091	18044-014	HOLDER, MUFFLER CONNECTOR		1	
18001	18001-126	MUFFLER		1	
18049	18049-083	PIPE-EXHAUST		1	
18069	18069-004	HOLDER-EXHAUST PIPE		1	
49099	18033-067	BAFFLE-PIPE MUFFLER		1	
92093	18043-012	SEAL, MUFFLER		1	
115	115B0816	BOLT-SMALL-UPSET		2	
180	180Y0635	BOLT-UPSET-WS		2	
185	185B0816	BOLT-UPSET-WSP-SMALL		1	
223	223B0610	SCREW-PAN-WS-CROS		1	
317	317B0800	NUT-HEX-SMALL, 8MM		2	
410	410B0800	WASHER-PLAIN-SMALL, 8MM		2	
461	461F0800	WASHER-SPRING, 8MM		2	

E:350.0007



Ref. No.	Part No.	Description	Spec Code	Quantity- KH100	
				'87	A7
11009	13246-001	GASKET,CLUTCH RELEASE		1	
13081	13081-028	CLUTCH-ASSY		1	
13086	13086-1002	WHEEL-CLUTCH		1	
13087	13087-1011	HUB-CLUTCH		1	
13088	13088-006	PLATE-FRICTION		4	
13089	13089-005	PLATE-CLUTCH		3	
13091	13091-003	HOLDER,CLUTCH SPRING		1	
13095	13095-022	HOUSING-COMP-CLUTCH		1	
13097	13121-036	GEAR-PRIMARY SPUR		1	
13102	13102-1016	RELEASE-COMP-CLUTCH,INNER		1	
13113	13113-003	PUSHER-COMP-CLUTCH		1	
13118	13118-1001	RELEASE-CLUTCH OUTER		1	
13231	13231-1008	RELEASE-ASSY-CLUTCH		1	
92022	92022-054	WASHER,16,5x27x1,4		1	
92022A	92022-057	WASHER,25,5x36x1		1	
92043	92042-043	PIN,DOWEL,7x20		1	
92049	92050-071	SEAL-OIL		1	
92081	92081-012	SPRING,CLUTCH		6	
92081A	92081-015	SPRING,CLUTCH DAMPER		1	
92081B	92081-096	SPRING,CLUTCH RELEASE		1	
112	112G0516	BOLT-UPSET		6	
220	220B0616	SCREW-PAN-CROS,6x16		2	
291	291H0616	SCREW-SET,6x16		1	
312	312B0600	NUT-HEX,6MM		1	
410	410B0600	WASHER-PLAIN-SMALL,6MM		2	

This catalog covers:
'87 KH100-A7 Engine

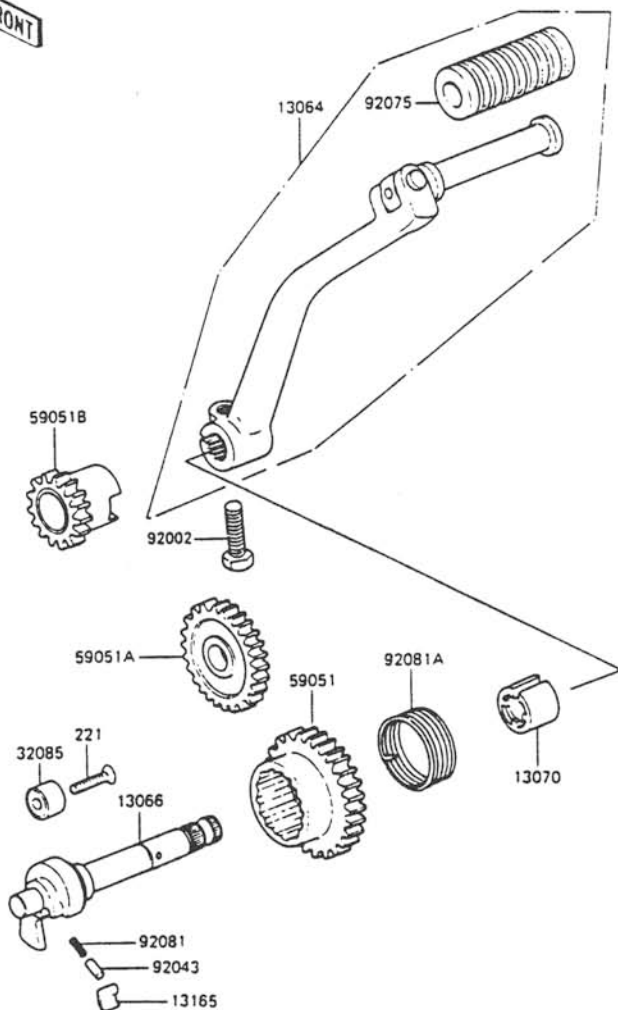
GRID NO.

B-7

This grid covers:
Kickstarter Mechanism

E13-0-0039

FRONT



Ref. No.	Part No.	Description	Spec Code	Quantity- KH100	
				'87	A7
13064	13064-1042	LEVER-ASSY-KICK		1	
13066	13066-1024	SHAFT-KICK		1	
13070	13070-1130	GUIDE,KICK SPRING		1	
13165	13069-005	PAWL,KICKSTARTER		1	
32085	13072-003	STOPPER,KICKSTARTER		1	
59051	13068-007	GEAR-SPUR,KICKSTARTER,35T		1	
59051A	13073-004	GEAR-SPUR,KICKSTARTER, IDLE,30T		1	
59051B	13075-004	GEAR-SPUR,KICKSTARTER PINION		1	
92002	92002-1438	BOLT,8X25		1	
92043	92043-013	PIN,DOWEL,3,9X1U.8		1	
92075	13063-002	DAMPER,KICK PEDAL		1	
92081	92081-014	SPRING,KICK PAWL		1	
92081A	92083-004	SPRING,KICKSTARTER RETURN		1	
221	221B0620	SCREW-CSK-CROS,6X20		1	

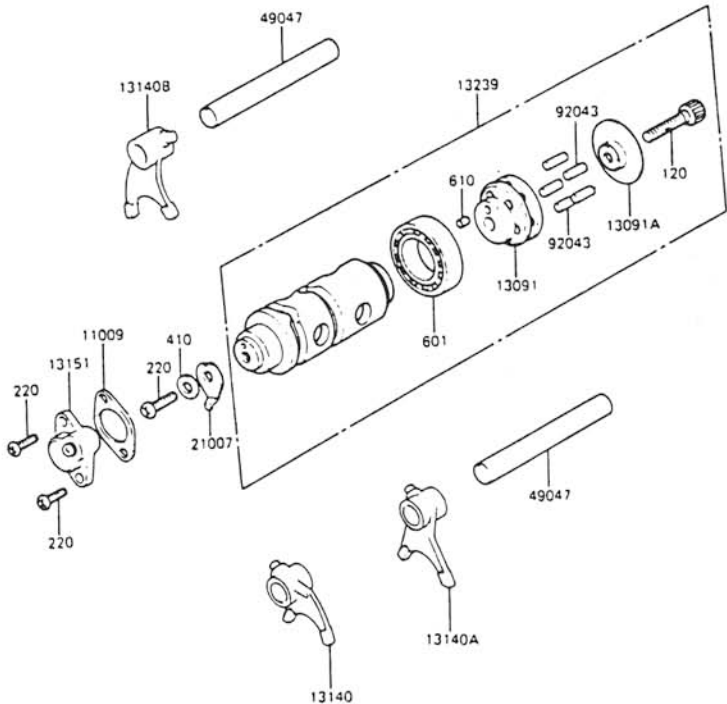
This catalog covers:
'87 KH100-A7 Engine

GRID NO.

B-10

This grid covers:
Change Drum/Shift Fork

E1362-0018



Ref. No.	Part No.	Description	Spec Code	Quantity- KH100	
				'87	A7
11009	13146-002	GASKET, NEUTRAL SWITCH			1
13091	13091-1077	HOLDER, CHANGE DRUM			1
13091A	13142-014	HOLDER, CHANGE DRUM PIN			1
13140	13140-1026	FORK-SHIFT, LOW&2ND			1
13140A	13140-1027	FORK-SHIFT, 3RD			1
13140B	13140-1028	FORK-SHIFT, 4TH&TOP			1
13151	13151-1001	SWITCH-COMP, NEUTRAL			1
13239	13239-1034	DRUM-ASSY-CHANGE			1
21007	21007-1003	ROTOR, TOP & NEUTRAL			1
49047	13209-014	ROD-SHIFT, 10X80			2
92043	92042-042	PIN, DOWEL, 4X14, 8			5
120	12000630	BOLT-SOCKET, 6X30			1
220	22080616	SCREW-PAN-CROS, 6X16			3
410	41080600	WASHER-PLAIN-SMALL, 6MM			1
601	60186004	BEARING-BALL, #6004C3			1
610	610A0406	ROLLER, 4X6			1

This catalog covers:
'87 KH100-A7 Engine

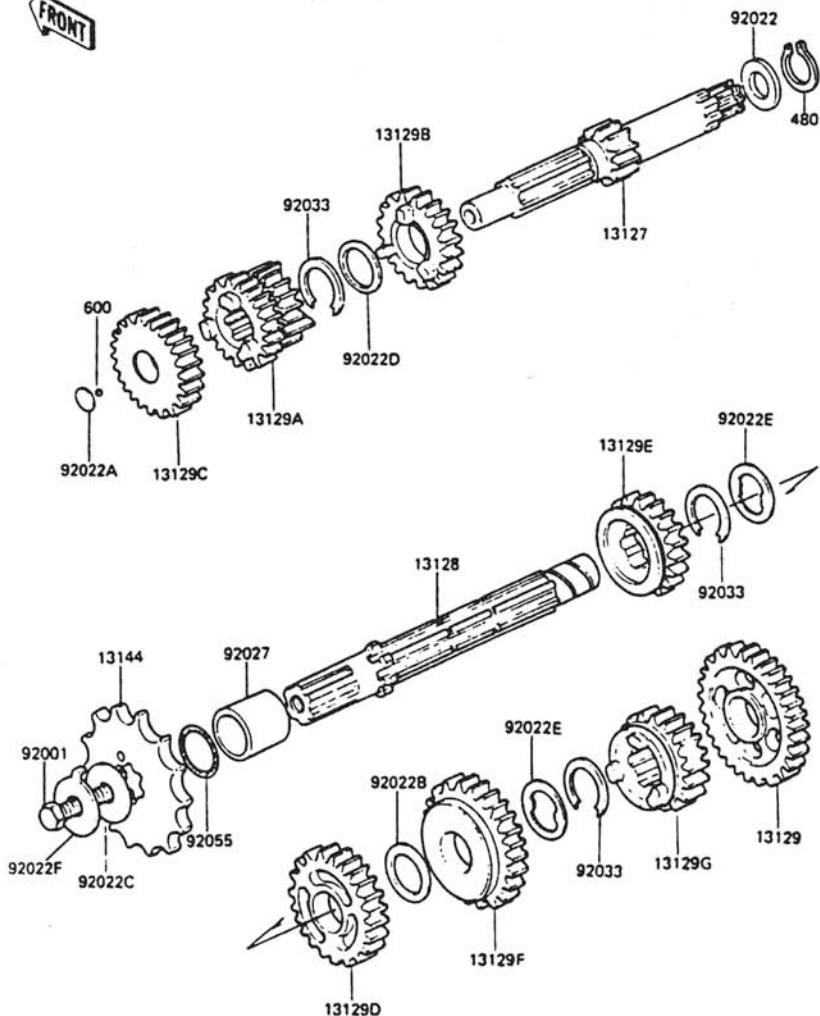
GRID NO.

B-9

This grid covers:
Transmission

E1361-0027

FRONT



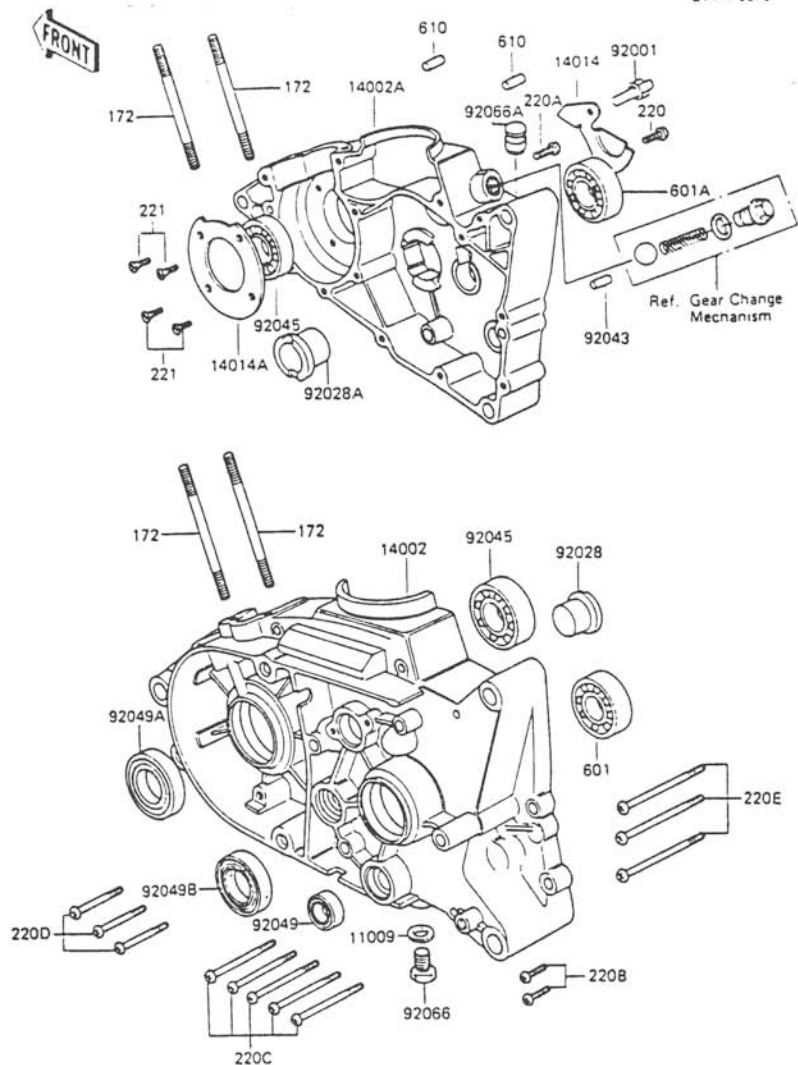
Ref. No.	Part No.	Description	Spec Code	Quantity - KH100	
				'87	A7
13127	13127-1017	SHAFT-TRANSMISSION INPUT			1
13128	13128-021	SHAFT-TRANSMISSION OUTPUT			1
13129	13129-010	GEAR, OUTPUT LOW, 35T			1
13129A	13129-1138	GEAR, INPUT 2ND&3RD, 17T&20T			1
13129B	13129-1139	GEAR, INPUT 4TH, 22T			1
13129C	13129-1146	GEAR, INPUT TOP, 28T			1
13129D	13129-1148	GEAR, OUTPUT 3RD, 26T			1
13129E	13129-1149	GEAR, OUTPUT TOP, 26T			1
13129F	13129-1642	GEAR, OUTPUT 2ND, 30T			1
13129G	13129-1708	GEAR, OUTPUT 4TH, 24T			1
13144	13144-066	SPROCKET-OUTPUT, 14T			1
92001	92001-1368	BOLT, 8X16			1
92022	92022-053	WASHER, THRUST, 16.5X21X0.8			1
92022A	92022-115	WASHER, THRUST			1
92022B	92022-146	WASHER, THRUST, 18.5X23X1.6			1
92022C	92022-266	WASHER, T=2, 3			1
92022D	92022-271	WASHER, 18, 3X22X0.5			1
92022E	92024-030	WASHER, TOOTHED, 18.5X23X1.2			2
92022F	92030-012	WASHER, CLAW, 8X22X1, 2			1
92027	92027-1595	COLLAR, ENGINE SPROCKET, L=13.7			1
92033	92033-014	RING-SNAP, 16MM			3
92055	92055-022	RING-O, 17, 5X1, 5			1
480	480J1600	CIRCLIP-TYPE-C, 16MM			1
600	600A0700	BALL-STEEL, 7/32"			1

This catalog covers:
'87 KH100-A7 Engine

GRID NO.
B-12

This grid covers:
Crankcase

E1411-0046



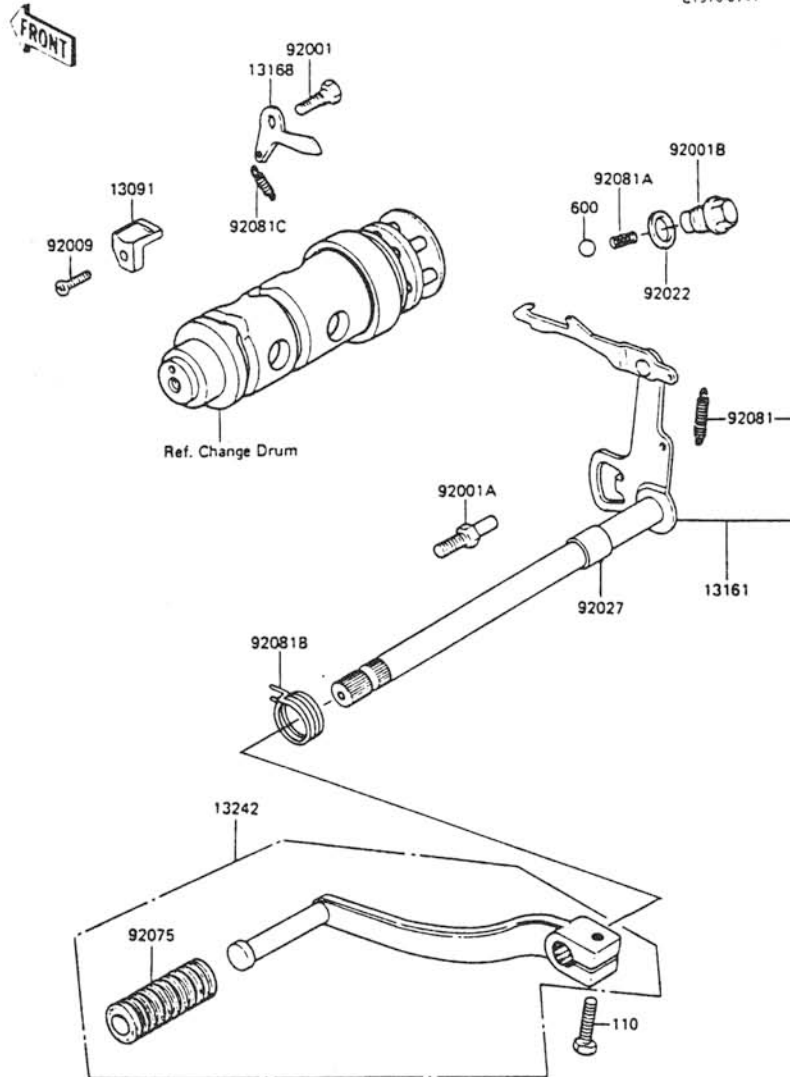
Ref. No.	Part No.	Description	Spec Code	Quantity- KH100	
				'87	A7
11009	92065-058	GASKET,10,5X16X1,DRAIN PLUG		1	
14002	14002-1072	CRANKCASE,LH		1	
14002A	14002-1205	CRANKCASE,RH		1	
14014	14014-008	PLATE-POSITION		1	
14014A	14014-017	PLATE-POSITION		1	
92001	92001-1426	BOLT,CHANGE DRUM STOP		1	
92028	92028-025	BUSHING,L=23.5		1	
92028A	92028-069	BUSHING,L=14		1	
92043	92043-1322	PIN,8X16		3	
92045	92045-1032	BEARING-BALL,#6204		2	
92049	92049-004	SEAL-OIL,SB12205		1	
92049A	92049-1240	SEAL-OIL		1	
92049B	92050-013	SEAL-OIL,SC25376		1	
92066	92067-001	PLUG,DRAIN,10X12		1	
92066A	92074-035	PLUG,15X19		1	
172	172G08115	BOLT-STUD,8X115		4	
220	220B0612	SCREW-PAN-CROS,6X12		2	
220A	220B0620	SCREW-PAN-CROS,6X20,WHITE		1	
220B	220B0625	SCREW-PAN-CROS,6X25		2	
220C	220B0640	SCREW-PAN-CROS,6X40		5	
220D	220B0660	SCREW-PAN-CROS,6X60		3	
220E	220B0665	SCREW-PAN-CROS,6X65		3	
221	221B0616	SCREW-CSK-CROS,6X16		4	
601	601B6004	BEARING-BALL,#6004C3		1	
601A	601B6005	BEARING-BALL,#6005C3		1	
610	610A0512	ROLLER,5X12		2	

This catalog covers:
'87 KH100-A7 Engine

GRID NO.
B-11

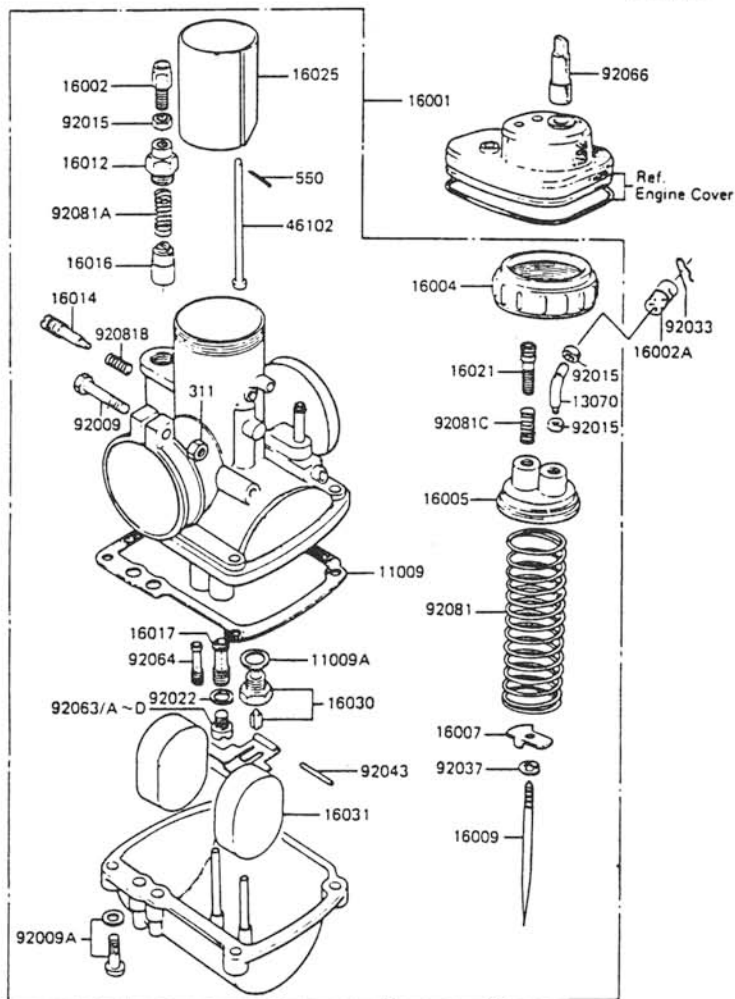
This grid covers:
Gear Change Mechanism

E1370-0141



Ref. No.	Part No.	Description	Spec Code	Quantity- KH100	
				'87	A7
13091	13091-1350	HOLDER		1	
13161	13161-1026	LEVER-COMP-CHANGE SHAFT		1	
13168	13168-1046	LEVER, GEAR CHANGE DRUM		1	
13242	13242-1007	LEVER-ASSY-CHANGE		1	
92001	92001-012	BOLT, CHANGE DRUM LEVER		1	
92001A	92001-1401	BOLT, RETURN SPRING		1	
92001B	92001-182	BOLT, NEUTRAL POSITION		1	
92009	92009-1266	SCREW		1	
92022	92022-524	WASHER, 16, 5x23x2		1	
92027	92027-121	COLLAR, 12X18X11,5		1	
92075	13157-004	DAMPER, CHANGE PEDAL		1	
92081	92081-011	SPRING, CHANGE LEVER		1	
92081A	92081-112	SPRING		1	
92081B	92081-1129	SPRING, TENSION		1	
92081C	92083-012	SPRING, CHANGE DRUM LEVER		1	
110	110B0620	BOLT, 6X20		1	
600	600A1300	BALL-STEEL, 13/32"		1	

E1611-0033



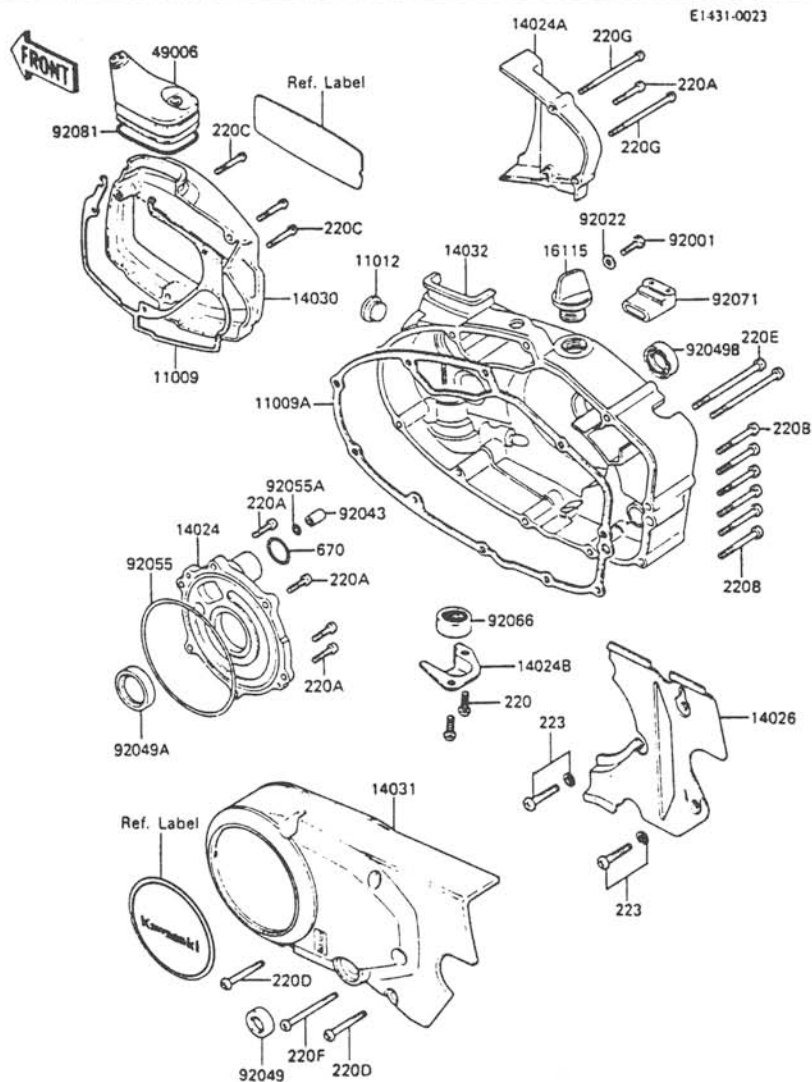
Ref. No.	Part No.	Description	Spec Code	Quantity- KH100	
				'87	A7
11009	16019-021	GASKET, FLOAT CHAMBER		1	
11009A	16029-002	GASKET, FLOAT VALVE SEAT		1	
13070	16077-008	GUIDE, CABLE		1	
16001	16001-170	CARBURETOR		1	
16002	16002-002	ADJUSTER-CABLE, STARTER		1	
16002A	16002-007	ADJUSTER-CABLE, THROTTLE VALVE		1	
16004	16004-010	CAP-CHAMBER, MIXING		1	
16005	16005-005	TOP-CHAMBER, MIXING		1	
16007	16007-020	SEAT-SPRING, THROTTLE VALVE		1	
16009	16009-059	NEEDLE-JET, 4EJ7		1	
16012	16012-004	CAP-STARTER PLUNGER		1	
16014	16014-002	SCREW-PILOT AIR		1	
16016	16016-002	PLUNGER, STARTER		1	
16017	16017-068	JET-NEEDLE, 0-2		1	
16021	16021-003	SCREW-THROTTLE STOP		1	
16025	16025-057	VALVE-THROTTLE, CA2.0		1	
16030	16030-001	VALVE-FLOAT, #2.0		1	
16031	16031-015	FLOAT		1	
46102	16024-006	ROD, THROTTLE VALVE STOP		1	
92009	16010-004	SCREW, CLAMP		1	
92009A	16033-012	SCREW, FLOAT CHAMBER		4	
92015	16003-004	NUT, CABLE ADJUST LOCK		3	
92022	16034-001	WASHER, MAIN JET		1	
92033	92036-018	RING-SNAP		1	
92037	16008-010	CLAMP, E-TYPE		1	
92043	16032-003	PIN, FLOAT		1	
92063	92063-093	JET-MAIN, #85R		1	
	(OPTION)				
92063A	92063-109	JET-MAIN, #75R		1	
	(OPTION)				
92063B	92063-122	JET-MAIN, #77.5		1	
	(OPTION)				
92063C	92063-123	JET-MAIN, #80R		1	
92063D	92063-124	JET-MAIN, #82.5R		1	
	(OPTION)				
92064	92064-021	JET-PILOT, #20		1	
92066	16147-001	PLUG, 12X40		1	
92081	16006-013	SPRING, THROTTLE VALVE		1	
92081A	16013-003	SPRING, STARTER PLUNGER		1	
92081B	16015-001	SPRING		1	

This catalog covers:
'87 KH100-A7 Engine

GRID NO.

B-13

This grid covers:
Engine Cover



Ref. No.	Part No.	Description	Spec Code	Quantity- KH100		
				'87		
				A7		
11009	11009-1136	GASKET,CARBURETOR COVER		1		
11009A	14046-006	GASKET,CLUTCH COVER		1		
11012	14039-001	CAP,RUBBER		1		
14024	14019-056	COVER,ROTARY DISC VALVE		1		
14024A	14025-1510	COVER,OIL PUMP		1		
14024B	14076-005	COVER,CLUTCH CABLE		1		
14026	14026-1023	COVER-CHAIN		1		
14030	14030-1007	COVER-CARBURETOR		1		
14031	14031-1069	COVER-GENERATOR		1		
14032	14032-1218	COVER-CLUTCH		1		
16115	16115-018	CAP-OIL FILLER		1		
49006	49006-1032	BOOT,CARBURETOR		1		
92001	92001-121	BOLT,6X14		1		
92022	92022-077	WASHER,6.1X12X1		1		
92043	92042-017	PIN,DOWEL,8X16		1		
92049	92049-1249	SEAL-OIL		1		
92049A	92049-1250	SEAL-OIL		1		
92049B	92051-003	SEAL-OIL,TB16267		1		
92055	92055-010	RING-O,10UUMM		1		
92055A	92055-029	RING-O,7,8X3.5		1		
92066	16116-006	PLUG,25X12		1		
92071	16136-007	GROMMET,OVERFLOW PIPE		1		
92081	92081-047	SPRING,COIL		1		
220	22080612	SCREW-PAN-CROS,6X12		2		
220A	22080620	SCREW-PAN-CROS,6X20,WHITE		7		
220B	22080630	SCREW-PAN-CROS,6X30		6		
220C	22080635	SCREW-PAN-CROS,6X35		3		
220D	22080640	SCREW-PAN-CROS,6X40		4		
220E	22080645	SCREW-PAN-CROS,6X45		2		
220F	22080650	SCREW-PAN-CROS,6X50		1		
220G	22080675	SCREW-PAN-CROS,6X75		2		
223	22380612	SCREW-PAN-WS-CROS		2		
670	670B3026	O RING,26MM		1		

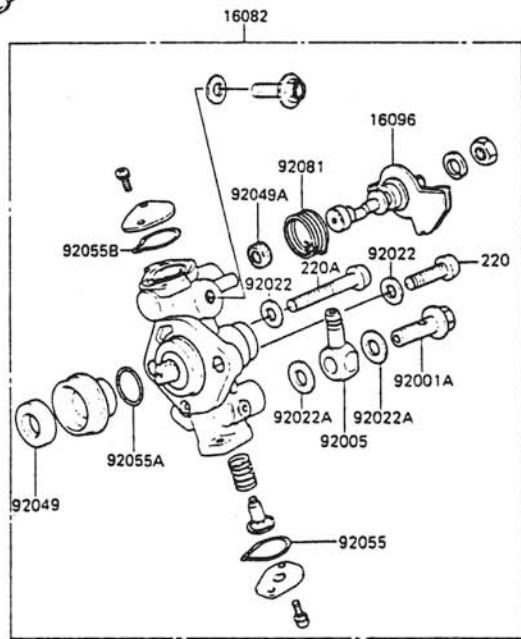
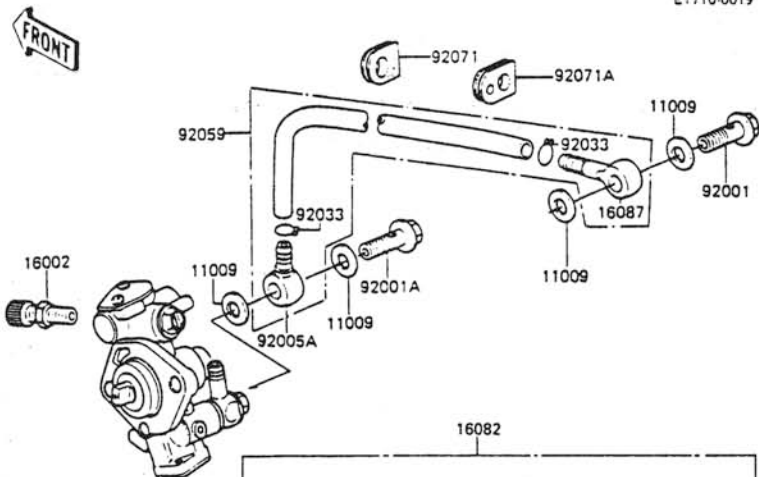
This catalog covers:
 '87 KH100-A7 Engine

GRID NO.

C-4

This grid covers:
 Oil Pump

E17100019



Ref. No.	Part No.	Description	Spec Code	Quantity - KH100	
				'87	A7
11009	11009-1298	GASKET,6X12X1.0		4	
11009A	16094-002	GASKET,OIL PUMP		1	
13107	16086-001	SHAFT,OIL PUMP		1	
16002	16002-012	ADJUSTER-CABLE		1	
16082	16082-067	PUMP-ASSY-OIL		1	
16085	16085-004	GEAR,OIL PUMP		1	
16087	16128-009	VALVE-CHECK		1	
16096	16096-012	LEVER-OIL PUMP		1	
92001	92060-008	BOLT,BANJO,L=13,5		1	
92001A	92060-013	BOLT,BANJO,L=16		2	
92005	92061-009	FITTING,BANJO		1	
92005A	92061-018	FITTING,BANJO		1	
92022	92022-037	WASHER,5,5X10,5X0,8		1	
92022A	92022-077	WASHER,6,1X12X1		2	
92033	92036-022	RING-SNAP		2	
92049	16091-001	SEAL-OIL,OIL PUMP SHAFT		1	
92049A	92049-1294	SEAL-OIL,CAMSHAFT,"X"TYPE		1	
92055	16088-002	RING-O,CAP,BANJO SIDE		1	
92055A	16090-002	RING-O,OIL PUMP SHAFT		1	
92055B	16090-004	RING-O,CAP,CAMSHAFT SIDE		1	
92059	16134-021	TUBE,OIL		1	
92071	21017-002	GROMMET		1	
92071A	92071-067	GROMMET,OIL PIPE		1	
92081	16093-006	SPRING,OIL PUMP LEVE		1	
220	220B0514	SCREW-PAN-CROS		1	
220A	220B0528	SCREW-PAN-CROS		1	
482	482K9000	CIRCLIP-TYPE-E,9MM		1	
510	510A3100	KEY-WOODRUFF		1	

This catalog covers:
 '87 KH100-A7 Engine

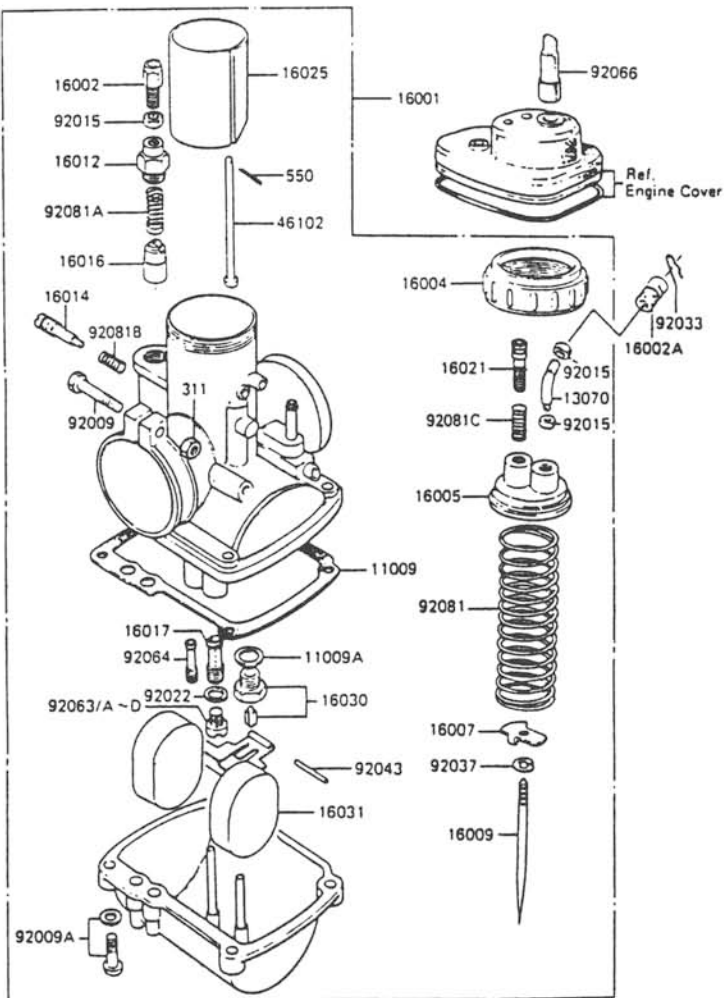
GRID NO.

C-3

This grid covers:
 Carburetor (2/2)

E1611-0033

FRONT



Ref. No.	Part No.	Description	Spec Code	Quantity- KH100	
				'87	A7
92081C	16022-005	SPRING, THROTTLE STOP SCREW			1
311	31180600	NUT-HEX, 6MM			1
550	55001210	PIN-COTTER, 1.2X10			1

This catalog covers:
 '87 KH100-A7 Engine

GRID NO.

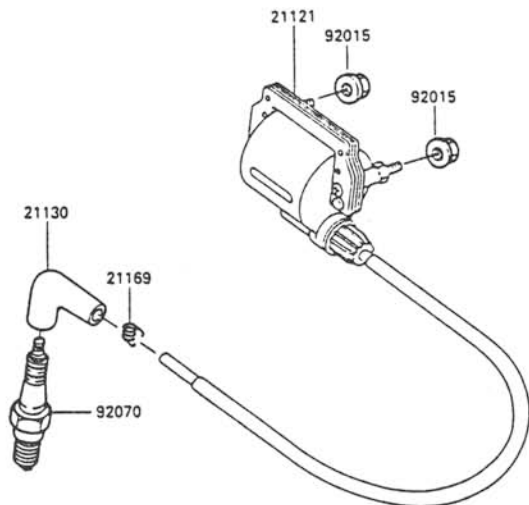
C-6

This grid covers:
Ignition Coil

E1830-0053

FRONT

Ref. No.	Part No.	Description	Spec Code	Quantity- KH100			
				'87			
21121	21121-1105	COIL-IGNITION					1
21130	21130-009	CAP-SPARK PLUG					1
21169	92101-001	TERMINAL, SPARK PLUG CAP					1
92015	92015-1193	NUT, FLANGED, 6MM					2
92070	92070-037	PLUG-SPARK, B8ES (NGK)					1



This catalog covers:
'87 KH100-A7 Engine

GRID NO.

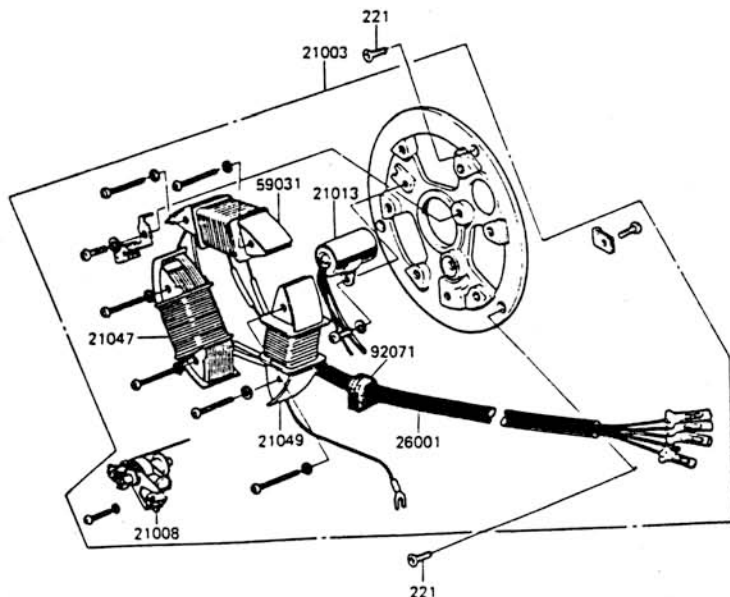
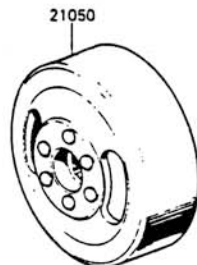
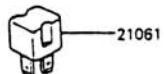
C-5

This grid covers:
Generator

E1810-0042

Ref. No.	Part No.	Description	Spec Code	Quantity- KH100	
				'87	A7
21003	21003-1050	STATOR		1	
21008	21008-006	BREAKER, CONTACT		1	
21013	21013-006	CONDENSER		1	
21047	21047-1018	COIL-LIGHTING		1	
21049	21049-1012	COIL-EXCITING		1	
21050	21050-1025	FLYWHEEL		1	
21061	21061-1003	RECTIFIER		1	
26001	21029-031	HARNESS, MAGNETO		1	
59031	59031-1005	COIL-CHARGING		1	
92071	21017-002	GROMMET		1	
221	22180614	SCREW-CSK-CR05,6X14		2	

FRONT



This catalog covers:
 '87 KH100-A7 Chassis

GRID NO.

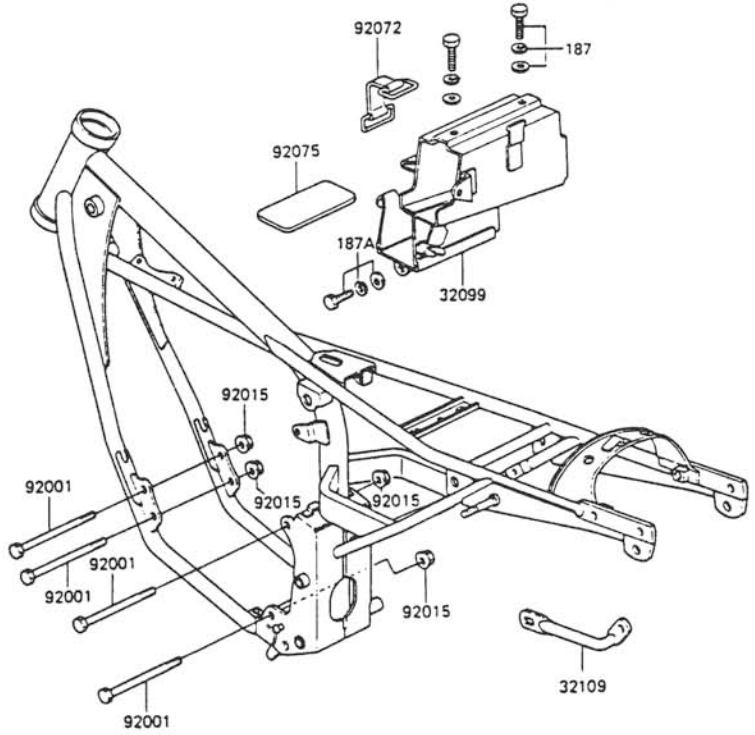
D-4

This grid covers:
 Frame Fitting

F2131-0158

Ref. No.	Part No.	Description	Spec Code	Quantity- KH100		
				'87		
32099	32099-012	CASE, BATTERY & TOOL		1		
32109	32109-014	GRIP-FRAME		1		
92001	92001-1245	BOLT		4		
92015	92015-1428	NUT, FLANGED, 10MM		4		
92072	92072-1017	BAND, L=45		1		
92075	32103-025	DAMPER, BATTERY		1		
187	187B0612	BOLT-UPSET-WSP		2		
187A	187B0616	BOLT-UPSET-WSP		1		

FRONT



This catalog covers:
 '87 KH100-A7 Chassis

GRID NO.

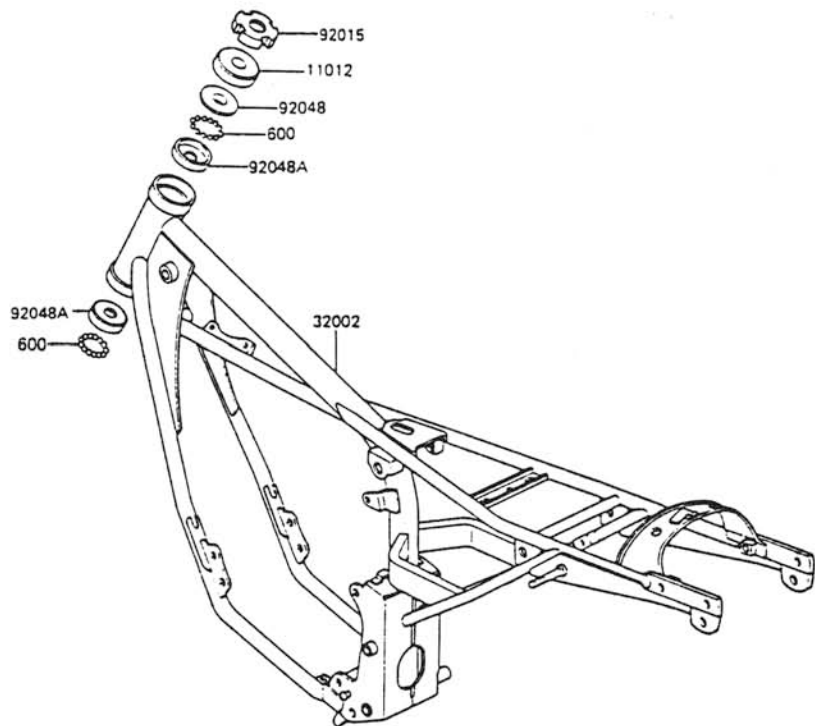
D-3

This grid covers:
Frame

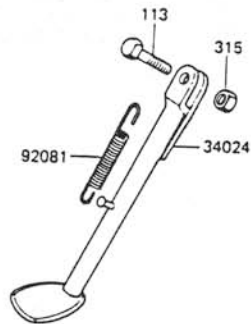
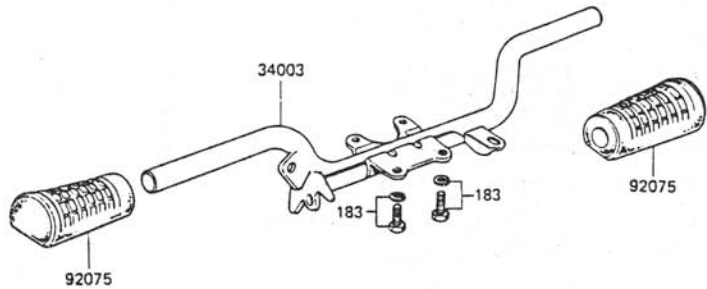
F2120-0158

FRONT

Ref. No.	Part No.	Description	Spec Code	Quantity - KH100	
				'87	A7
11012	46098-004	CAP, STEERING STEM		1	
32002	32002-1968	FRAME-COMP		1	
92015	92090-006	NUT, STEERING STEM LOCK 25MM		1	
92048	92047-014	CONE, STEERING STEM BEARING		1	
92048A	92048-009	RACE, STEERING STEM BEARING		2	
600	600A0600	BALL-STEEL, 3/16"		46	



F2160-0035



Ref. No.	Part No.	Description	Spec Code	Quantity- KH100			
				'87			
34003	34002-033	HOLDER-STEP					1
34024	34024-056	STAND-SIDE					1
92075	92076-025	DAMPER,STEP					2
92081	34025-008	SPRING,STAND					1
113	113B1028	BOLT-SMALL-FINE,10X28					1
183	183B0816	BOLT-UPSET-WS-SMALL					4
315	315B1000	NUT-HEX-FINE,10MM					1

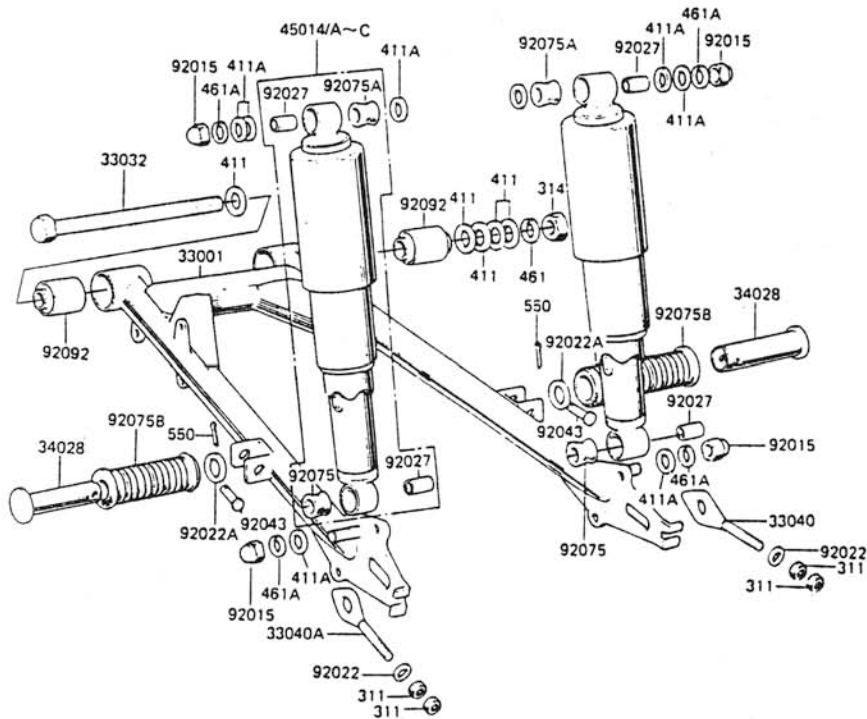
This catalog covers:
'87 KH100-A7 Chassis

GRID NO.
D-5

This grid covers:
Swing Arm/Shock Absorber

F21-40-0176

FRONT



Ref. No.	Part No.	Description	Spec Code	Quantity- KH100	
				'87	A7
33001	33001-051	ARM-COMP-SWING		1	
33032	33032-039	SHAFT-SWING ARM		1	
33040	33040-1006	ADJUSTER-CHAIN,RH		1	
33040A	33040-1011	ADJUSTER-CHAIN		1	
34028	34028-009	STEP,RR		2	
45014	45014-127-B1	SHOCKABSORBER,F,RED		2	
45014A	45014-127-M4	SHOCKABSORBER,L,P.BLUE		2	
45014B	45014-127-R1	SHOCKABSORBER,P,A.WHITE		2	
45014C	45014-127-T8	SHOCKABSORBER,P,G.GRAY		2	
92015	92020-014	NUT,CAP,12MM		4	
92022	92022-116	WASHER,6.5X16X2		2	
92022A	92022-1568	WASHER,20X30X2.3		2	
92027	92027-1017	COLLAR,12.1X16,1X21		4	
92043	92043-079	PIN,6X28		2	
92075	45017-012	DAMPER,SHOCKABSORBER		2	
92075A	92075-1010	DAMPER,SHOCKABSORBER		2	
92075B	92076-020	DAMPER		2	
92092	92092-006	BUSHING-RUBBER,SWING ARM SHAFT		2	
311	311B0600	NUT-HEX,6MM		4	
314	314B1000	NUT-HEX-FINE,10MM		1	
411	411B1000	WASHER-PLAIN,10MM		5	
411A	411B1200	WASHER-PLAIN,12MM		8	
461	461F1000	WASHER-SPRING,10MM		1	
461A	461F1200	WASHER-SPRING,12MM		4	
550	550D2015	PIN-COTTER,2,0X15		2	

This catalog covers:
 '87 KH100-A7 Chassis

GRID NO.

D-8

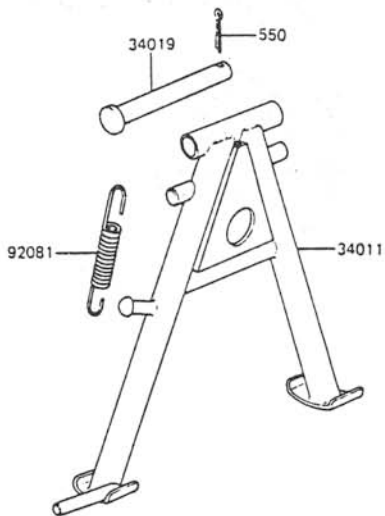
This grid covers:

Stand

F2190 0048

Ref. No.	Part No.	Description	Spec Code	Quantity- KH100	
				'87	A7
34011	34011-1028	STAND-CENTER		1	
34019	34019-1001	SHAFT-STAND, CNT		1	
92081	34025-008	SPRING, STAND		1	
550	55003025	PIN-COTTER, 3, 0x25		1	

FRONT



This catalog covers:
 '87 KH100-A7 Chassis

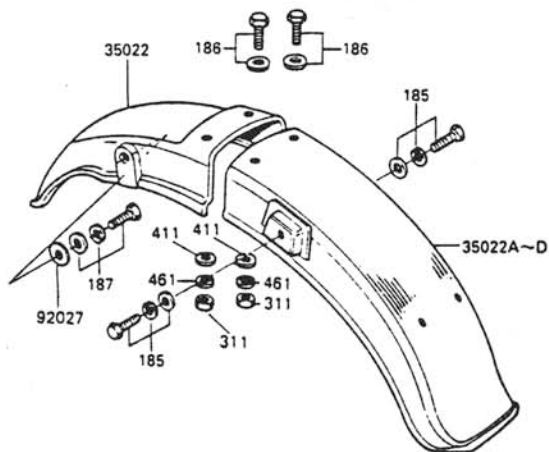
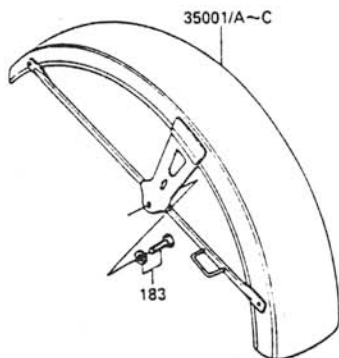
GRID NO.

D-7

This grid covers:
Fender

F2170-0222

FRONT



Ref. No.	Part No.	Description	Spec Code	Quantity- KH100	
				'87	A7
35001	35001-1128-B1	FENDER-ASSY-FRONT,F,RED		1	
35001A	35001-1128-M4	FENDER-ASSY-FRONT,L,P,BLUE		1	
35001B	35001-1128-R1	FENDER-ASSY-FRONT,P,A,WHITE		1	
35001C	35001-1128-T8	FENDER-ASSY-FRONT,P,G,GRAY		1	
35022	35022-084	FENDER-COMP-REAR,B		1	
35022A	35022-1235-B1	FENDER-COMP-REAR,RR,F,RED		1	
35022B	35022-1235-M4	FENDER-COMP-REAR,RR,L,P,BLUE		1	
35022C	35022-1235-R1	FENDER-COMP-REAR,RR,P,A,WHITE		1	
35022D	35022-1235-T8	FENDER-COMP-REAR,RR,P,G,GRAY		1	
92027	92027-122	COLLAR,L=4.7		2	
183	183B0812	BOLT-UPSET-WS-SMALL		4	
185	185B0825	BOLT-UPSET-WSP-SMALL		2	
186	186B0620	BOLT-UPSET-WP		2	
187	187B0614	BOLT-UPSET-WSP		2	
311	311B0600	NUT-HEX,6MM		2	
411	411B0600	WASHER-PLAIN,6MM		2	
461	461F0600	WASHER-SPRING,6MM		2	

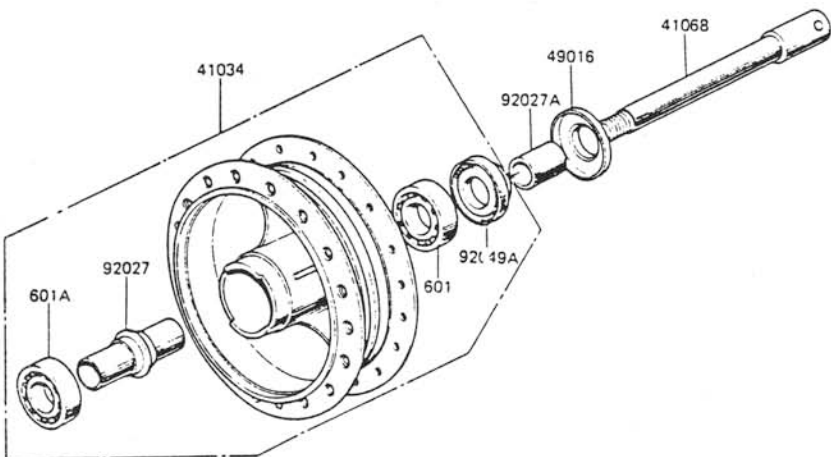
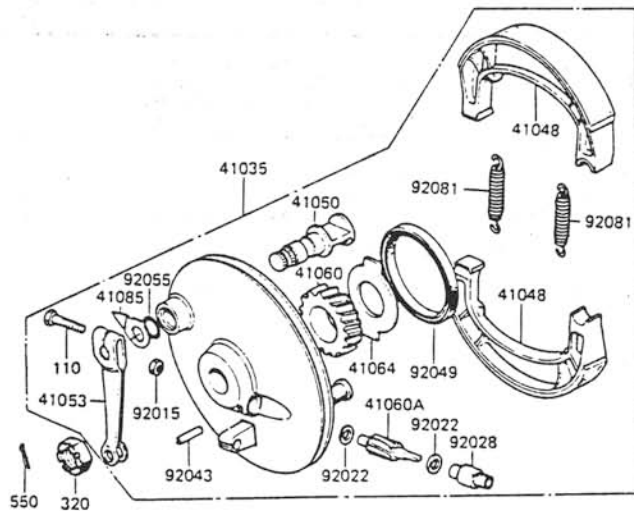
This catalog covers:
 '87 KH100-A7 Chassis

GRID NO.
D-10

This grid covers:
 Front Hub

F2230-0036

FRONT



Ref. No.	Part No.	Description	Spec Code	Quantity- KH100			
				'87			
41034	41034-025-80	DRUM-ASSY,FR,BUFF FINISH		1			
41035	41035-072	PANEL-ASSY-BRAKE		1			
41048	41048-1007	SHOE-BRAKE		2			
41050	41050-012	CAM-BRAKE		1			
41053	41053-005	LEVER-BRAKE CAM		1			
41060	41059-018	GEAR-METER SCREW,25T		1			
41060A	41060-014	GEAR-METER SCREW,10T		1			
41064	41064-009	RECEIVER-SPEEDOMETER		1			
41068	41068-026	AXLE,FR		1			
41085	41085-003	INDICATOR,BRAKE SHOE		1			
49016	41042-006	COVER-SEAL		1			
92015	41072-007	NUT,6MM		1			
92022	41063-001	WASHER,5,1X9X0,4		2			
92027	41039-005	COLLAR,L=47		1			
92027A	41069-005	COLLAR,12X18X19,4		1			
92028	41062-005	BUSHING,SPEEDOMETER CABLE		1			
92043	41082-001	PIN,SPRING		1			
92049	92050-010	SEAL-OIL,FRONT BRAKE PANEL		1			
92049A	92050-011	SEAL-OIL,FR BRK DRUM		1			
92055	92055-004	RING-O,BRAKE CAM		1			
92081	41049-002	SPRING,BRAKE SHOE		2			
110	110G0630	BOLT,6X30		1			
320	320B1200	NUT-CASTLE		1			
550	55003025	PIN-COTTER,3,0X25		1			
601	601B6301	BEARING-BALL,#6301C3		1			
601A	601B6301Z	BEARING-BALL,#6301ZC3		1			

This catalog covers:

'87 KH100-A7 Chassis

GRID NO.

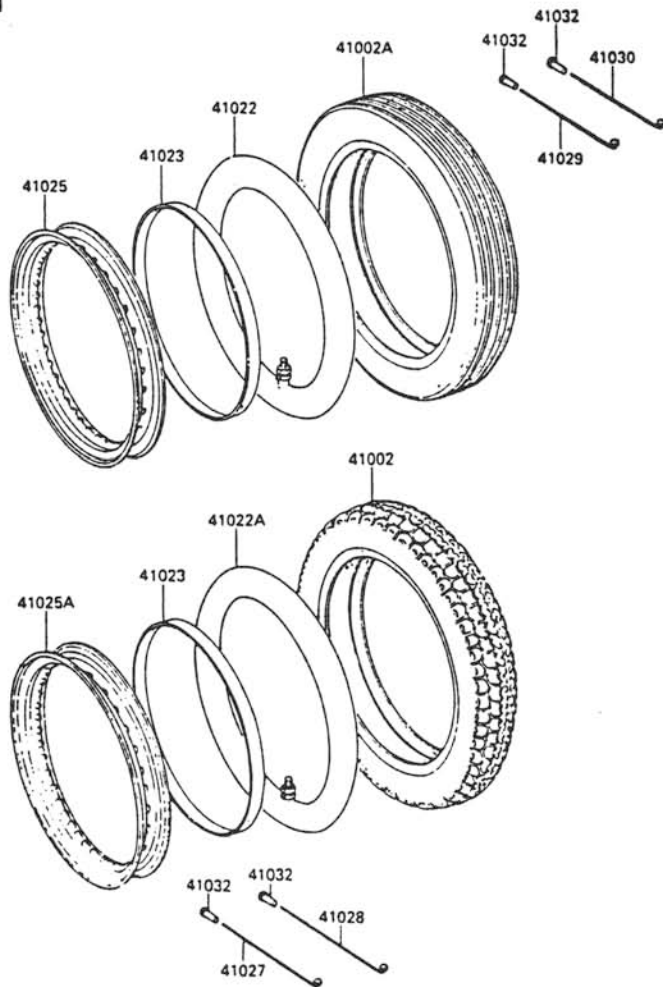
D-9

This grid covers:

Tire

F2210-0040

FRONT



Ref. No.	Part No.	Description	Spec Code	Quantity- KH100	
				'87	A7
41002	41002-1030	TIRE,RR,2.75-18 4PR,Y-955(Y)		1	
41002A	41019-040	TIRE,FR,2.50-18 4PR,Y-954(Y)		1	
41022	41022-017	TUBE-TIRE,2.50-18(YOKOHAMA)		1	
41022A	41022-032	TUBE-TIRE,2.75-18(YOKOHAMA)		1	
41023	41023-001	BAND-RIM,2.50/3.75-18(Y)		2	
41025	41025-1165	RIM,FR,1.40x18		1	
41025A	41025-1166	RIM,RR,1.60x18		1	
41027	41027-056	SPOKE-INNER,RR,171.5MMX1000		18	
41028	41028-056	SPOKE-OUTER,RR,171MMX860		18	
41029	41029-1173	SPOKE-INNER,FR,166MMX1020		18	
41030	41030-1113	SPOKE-OUTER,FR,165.5MMX820		18	
41032	41032-024	NIPPLE-SPOKE		36	

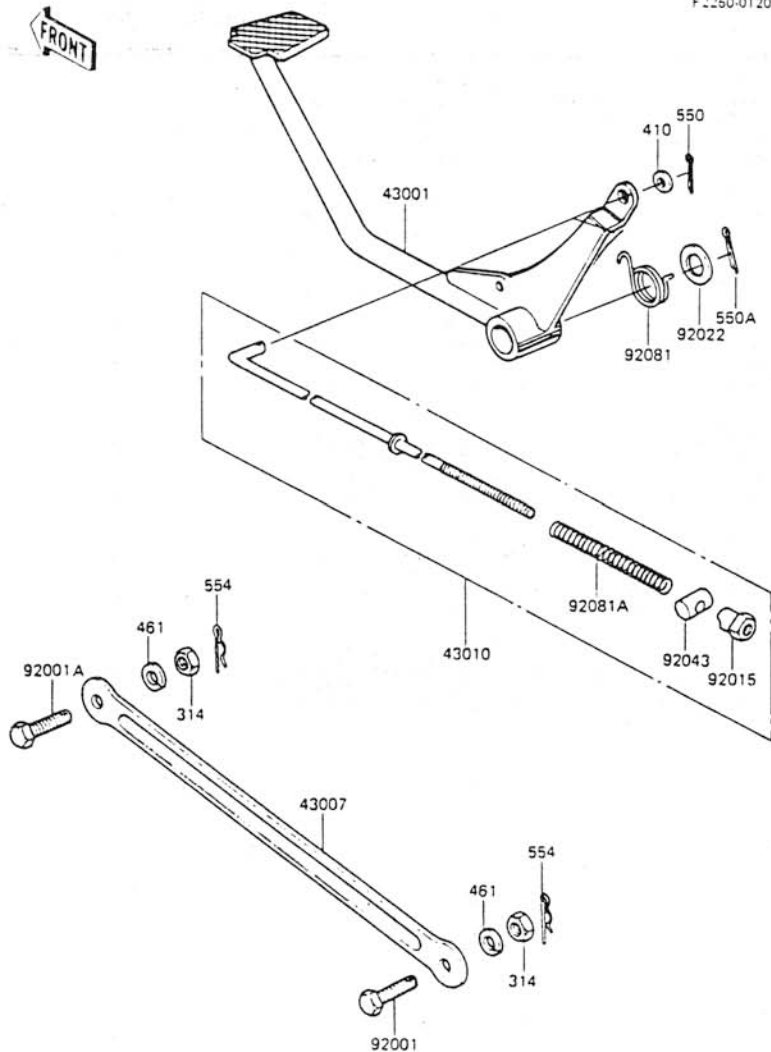
This catalog covers:
'87 KH100-A7 Chassis

GRID NO.

D-12

This grid covers:
Brake Pedal

F2260-0120



Ref. No.	Part No.	Description	Spec Code	Quantity- KH100	
				'87	A7
43001	43001-048	LEVER-BRAKE, PEDAL		1	
43007	43007-035	ROD-TORQUE, RR		1	
43010	43010-5003	ROD-ASSY-BRAKE		1	
92001	92003-003	BOLT, 10X32		1	
92001A	92003-017	BOLT, 10X25		1	
92015	92015-042	NUT, BRAKE ROD		1	
92022	92022-085	WASHER, 15, 3X24X1, 2		1	
92043	92043-039	PIN, BRAKE ROD		1	
92081	43005-030	SPRING, BRAKE PEDAL		1	
92081A	43012-001	SPRING, BRAKE ROD		1	
314	31481000	NUT-HEX-FINE, 10MM		2	
410	410B0500	WASHER-PLAIN-SMALL, 5MM		1	
461	461F1000	WASHER-SPRING, 10MM		2	
550	550D2015	PIN-COTTER, 2, 0X15		1	
550A	550D3030	PIN-COTTER, 3, 0X30		1	
554	554A0800	PIN-SNAP, 8MM		2	

This catalog covers:
 '87 KH100-A7 Chassis

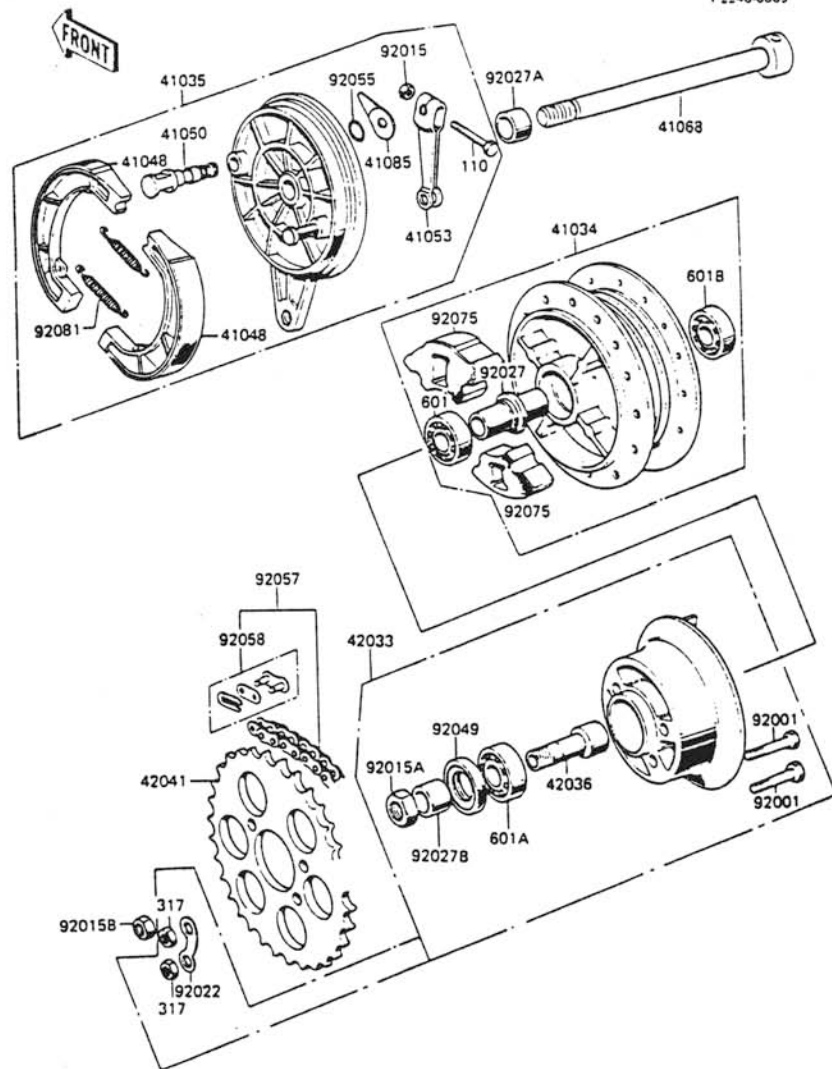
GRID NO.

D-11

This grid covers:

Rear Hub

F2240-0063



Ref. No.	Part No.	Description	Spec Code	Quantity- KH100	
				'87	A7
41034	41034-1039	DRUM-ASSY,RR		1	
41035	42006-067-80	PANEL-ASSY-BRAKE,RR,BUFF		1	
41048	41048-017	SHOE-BRAKE		2	
41050	41050-012	CAM-BRAKE		1	
41053	41053-002	LEVER-BRAKE CAM		1	
41068	41068-1109	AXLE,12X215		1	
41085	41085-003	INDICATOR,BRAKE SHOE		1	
42033	42033-1026	COUPLING-ASSY		1	
42036	42036-002	SLEEVE,RR HUB COUPLING		1	
42041	42041-048	SPROCKET-HUB		1	
92001	92001-021	BOLT,8X36		4	
92015	41072-007	NUT,6MM		1	
92015A	42045-004	NUT,16MM		1	
92015B	42045-005	NUT,10MM		1	
92022	92088-003	WASHER,SPROCKET LOCK		2	
92027	42010-005	COLLAR,L=58		1	
92027A	42032-002	COLLAR,12,2X22X30.5		1	
92027B	42037-003	COLLAR,17X25X12.5		1	
92049	92052-003	SEAL-OIL,COUPLING		1	
92055	92055-004	RING-O,BRAKE CAM		1	
92057	92057-1088	CHAIN,EK428-G 106L		1	
92058	92058-1014	JOINT-CHAIN,EK428-G		1	
92075	42014-016	DAMPER,RR HUB SHOCK		4	
92081	41049-002	SPRING,BRAKE SHOE		2	
110	11060630	BOLT,6X30		1	
317	31780800	NUT-HEX-SMALL,8MM		4	
601	60186201Z	BEARING-BALL,#6201ZC3		1	
601A	60186203	BEARING-BALL,#6203C3		1	
601B	60186301Z	BEARING-BALL,#6301ZC3		1	

This catalog covers:
 '87 KH100-A7 Chassis

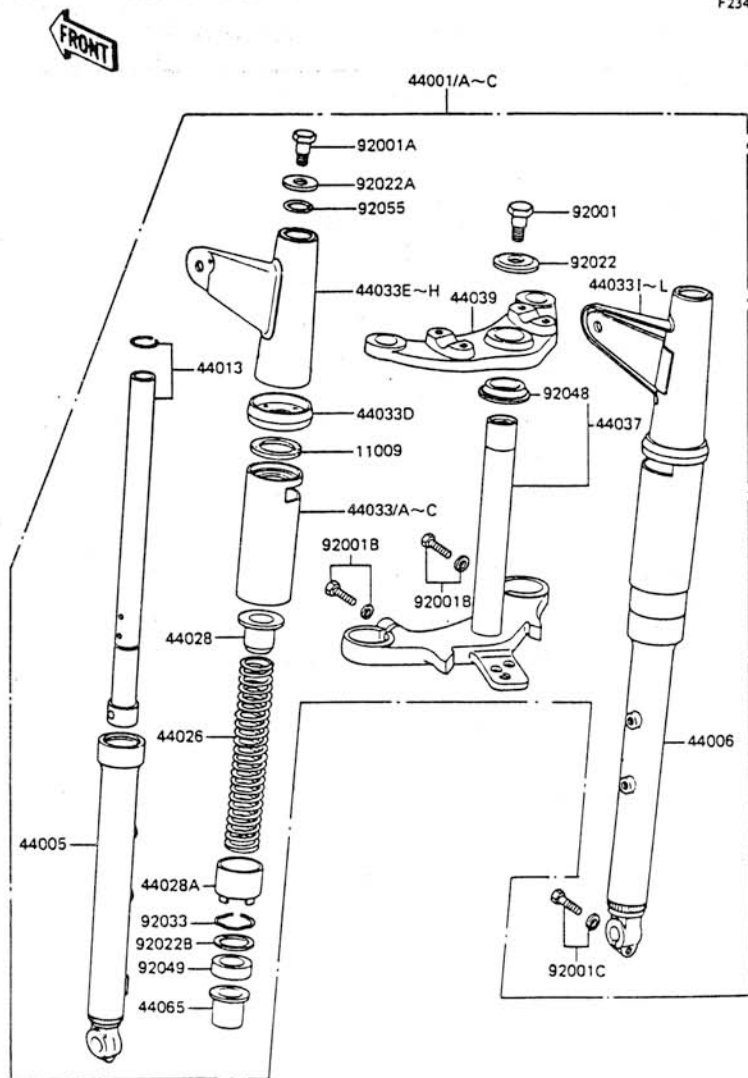
GRID NO.

D-14

This grid covers:
 Front Fork

F2340-0060

Ref. No.	Part No.	Description	Spec Code	Quantity- KH100	
				'87	A7
11009	44045-044	GASKET, FORK COVER			2
44001	44001-1678-B1	FORK-FRONT, F, RED			1
44001A	44001-1678-M4	FORK-FRONT, L, P, BLUE			1
44001B	44001-1678-R1	FORK-FRONT, P, A, WHITE			1
44001C	44001-1678-T8	FORK-FRONT, P, G, GRAY			1
44005	44005-1077	PIPE-LEFT FORK OUTER			1
44006	44006-1076	PIPE-RIGHT FORK OUTER			1
44013	44013-1071	PIPE-FORK INNER			2
44026	44026-1121	SPRING-FRONT FORK, K=0.4			2
44028	44028-1006	GUIDE-FORK SPRING			2
44028A	44028-1007	GUIDE-FORK SPRING			2
44033	44033-1076-B1	COVER-FORK, OUTER, F, RED			2
44033A	44033-1076-M4	COVER-FORK, OUTER, L, P, BLUE			2
44033B	44033-1076-R1	COVER-FORK, OUTER, P, A, WHITE			2
44033C	44033-1076-T8	COVER-FORK, OUTER, P, G, GRAY			2
44033D	44033-1077	COVER-FORK, GUIDE			2
44033E	44033-1178-B1	COVER-FORK, LAMP STAY, LH, F, RED			1
44033F	44033-1178-M4	COVER-FORK, LAMP STAY, LH, BLUE			1
44033G	44033-1178-R1	COVER-FORK, LAMP STAY, LH, WHITE			1
44033H	44033-1178-T8	COVER-FORK, LAMP STAY, LH, GRAY			1
44033I	44033-1179-B1	COVER-FORK, LAMP STAY, RH, F, RED			1
44033J	44033-1179-M4	COVER-FORK, LAMP STAY, RH, BLUE			1
44033K	44033-1179-R1	COVER-FORK, LAMP STAY, RH, WHITE			1
44033L	44033-1179-T8	COVER-FORK, LAMP STAY, RH, GRAY			1
44037	44037-079	HOLDER-FORK UNDER			1
44039	44039-054	HOLDER-FORK UPPER			1
44065	44065-1015	BUSHING-FRONT FORK			2
92001	44041-007	BOLT, FORK UPPER HOLDER			1
92001A	44041-052	BOLT, FORK TOP			2
92001B	44041-088	BOLT, 10X32			2
92001C	92001-1432	BOLT, 8X26			1
92022	44043-016	WASHER, FORK UPPER HOLDER			1
92022A	44043-017	WASHER, FORK TOP			2
92022B	92022-1265	WASHER, FORK			2
92033	92033-1003	RING-SNAP			2
92048	92047-013	RACE, STEERING STEM BEARING			1
92049	92049-1076	SEAL-OIL, FORK			2
92055	44046-002	RING-O, INNER PIPE, UPP			2



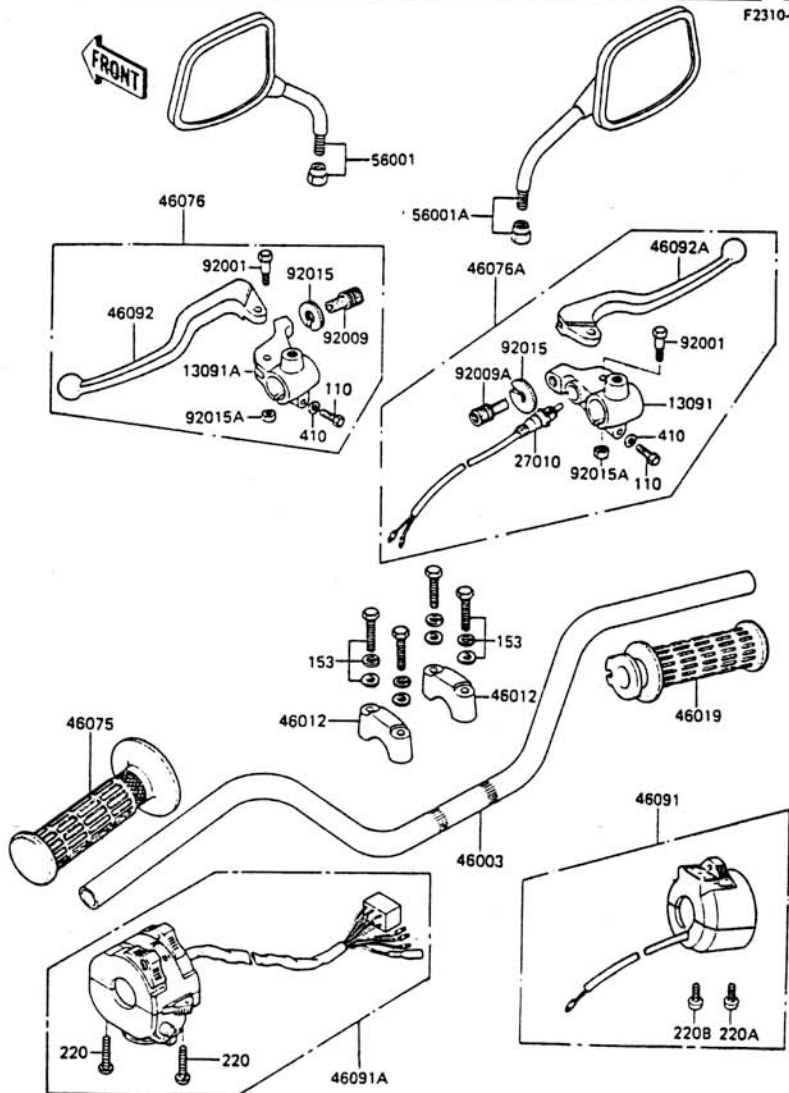
This catalog covers:
 '87 KH100-A7 Chassis

GRID NO.

D-13

This grid covers:
 Handlebar

F2310-0194



Ref. No.	Part No.	Description	Spec Code	Quantity- KH100	
				'87	A7
13091	13091-1110	HOLDER, BRAKE LEVER, F, BLACK		1	
13091A	46094-011-21	HOLDER, F, BLACK		1	
27010	27010-1035	SWITCH, BRAKE, FR		1	
46003	46003-1109	HANDLE		1	
46012	46012-004	HOLDER-HANDLE, UPP		2	
46019	46019-1011	GRIP-ASSY, THROTTLE		1	
46075	46075-1004	GRIP, LH		1	
46076	46076-1031	LEVER-ASSY-GRIP, LH		1	
46076A	46076-1032	LEVER-ASSY-GRIP, RH		1	
46091	46091-1252	HOUSING-ASSY-CONTROL, RH		1	
46091A	46091-1308	HOUSING-ASSY-CONTROL, LH		1	
46092	46092-1036	LEVER-GRIP, CLUTCH		1	
46092A	46092-1037	LEVER-GRIP, FRONT BRAKE		1	
56001	56001-1229	MIRROR-ASSY, LH		1	
56001A	56001-1230	MIRROR-ASSY, RH		1	
92001	92001-1704	BOLT, 5X22		2	
92009	92009-1134	SCREW, CABLE ADJUST, 8MM, BLACK		1	
92009A	92009-1150	SCREW		1	
92015	92015-1197	NUT, CABLE ADJUST LOCK, BLACK		2	
92015A	92015-1221	NUT, LOCK, 5MM		2	
110	110C0625	BOLT, 6X25		2	
153	153N0835	BOLT-WS-SMALL		4	
220	220B0522	SCREW-PAN-CROS		2	
220A	220B0535	SCREW-PAN-CROS		1	
220B	220B0540	SCREW-PAN-CROS		1	
410	410F0600	WASHER-PLAIN-SMALL, 6MM, BLACK		2	

This catalog covers:
 '87 KH100-A7 Chassis

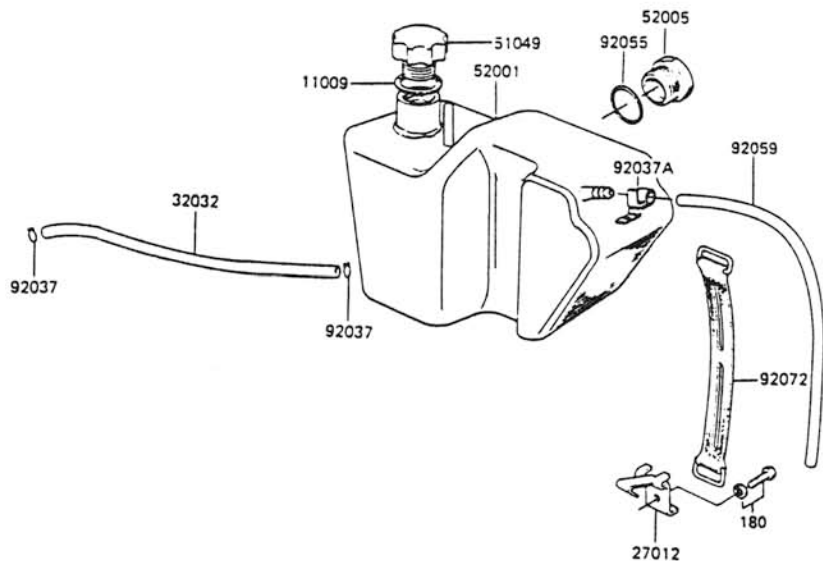
GRID NO.

E-4

This grid covers:

Oil Tank

F2450-0016



Ref. No.	Part No.	Description	Spec Code	Quantity- KH100			
				'87			
11009	92065-086	GASKET,OIL TANK CAP		1			
27012	32115-004	HOOK		1			
32032	51047-002	PIPE		1			
51049	52003-020	CAP-TANK,OIL		1			
52001	52001-035	TANK-OIL		1			
52005	52015-002	GAUGE,OIL LEVEL		1			
92037	92037-010	CLAMP,TUBE		2			
92037A	92037-146	CLAMP,BREATHER PIPE		1			
92055	92055-051	RING-O,20MM		1			
92059	92059-107	TUBE,4,5X9X400		1			
92072	92072-054	BAND,L=146,9		1			
180	180B0612	BOLT-UPSET-WS,6X12		1			

This catalog covers:
'87 KH100-A7 Chassis

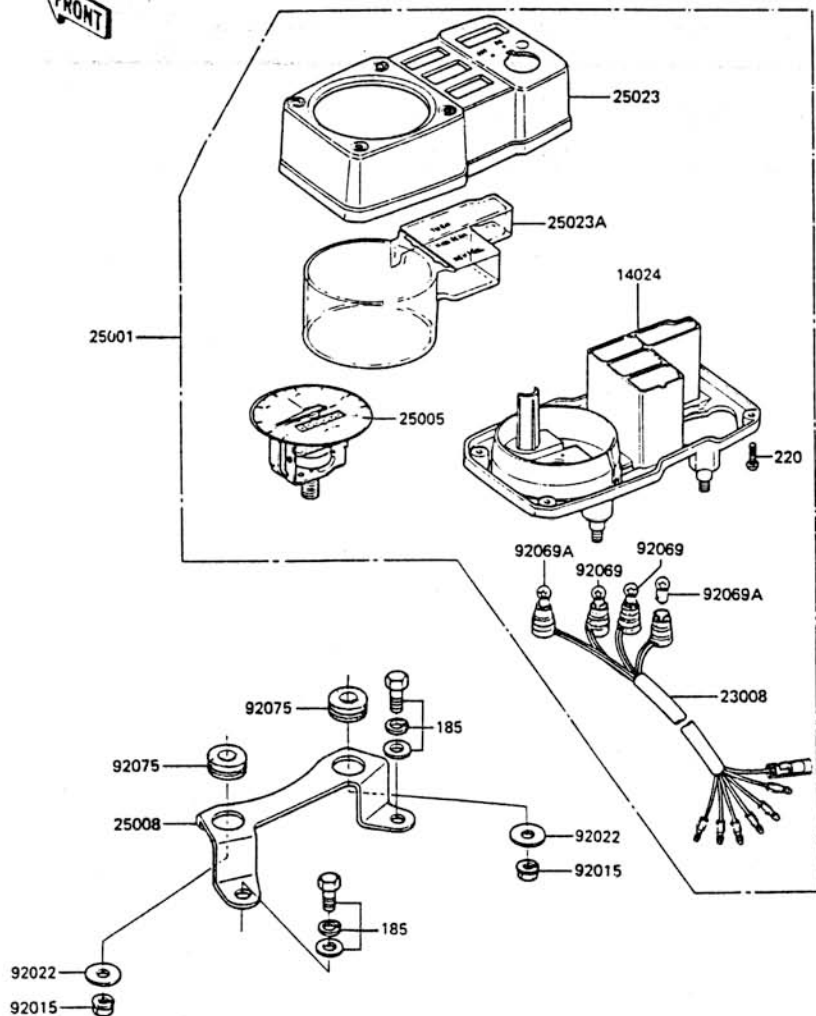
GRID NO.

E-6

This grid covers:
Meter

F2530-0074

FRONT



Ref. No.	Part No.	Description	Spec Code	Quantity - KH100	
				'87	A7
14024	14025-1870	COVER, METER, LWR		1	
23008	23008-1115	SOCKET-ASSY, METER		1	
25001	25001-1248	METER-ASSY, KPH		1	
25005	25005-1138	SPEEDOMETER, KPH		1	
25008	25008-1041	BRACKET-METER		1	
25023	25023-1035	COVER-METER CASE, UPP		1	
25023A	25023-1036	COVER-METER CASE, LWR		1	
92015	92017-014	NUT, LOCK, 6MM		2	
92022	92022-1557	WASHER, 6.5X20X1.6		2	
92069	92069-024	BULB, 6V 1.7W		2	
92069A	92069-053	BULB, 6V 3W, CLEAR		2	
92075	92075-1337	DAMPER		2	
185	18580816	BOLT-UPSET-WSP-SMALL		2	
220	22080410	SCREW-PAN-CROS		4	

This catalog covers:

'87 KH100-A7 Chassis

GRID NO.

E-5

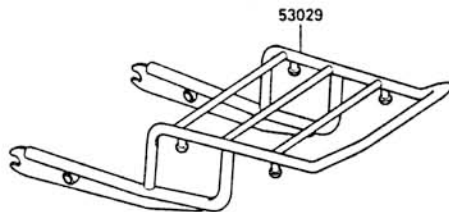
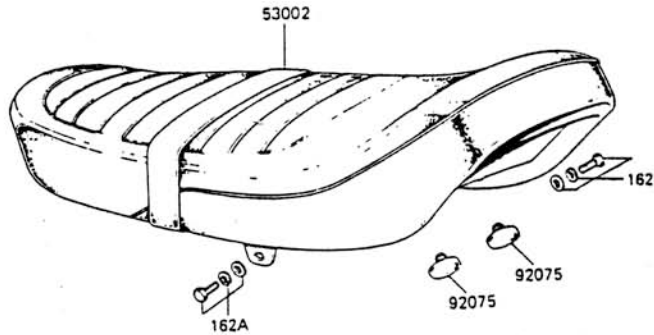
This grid covers:

Seat

F2510-0011



Ref. No.	Part No.	Description	Spec Code	Quantity - KH100	
				'87	A7
53002	53002-047	SEAT, DUAL			1
53029	53029-047	CARRIER, LUGGAGE			1
92075	92075-099	DAMPER			3
162	162B1028	BOLT-FINE-WSP			1
162A	162B1032	BOLT-FINE-WSP			1



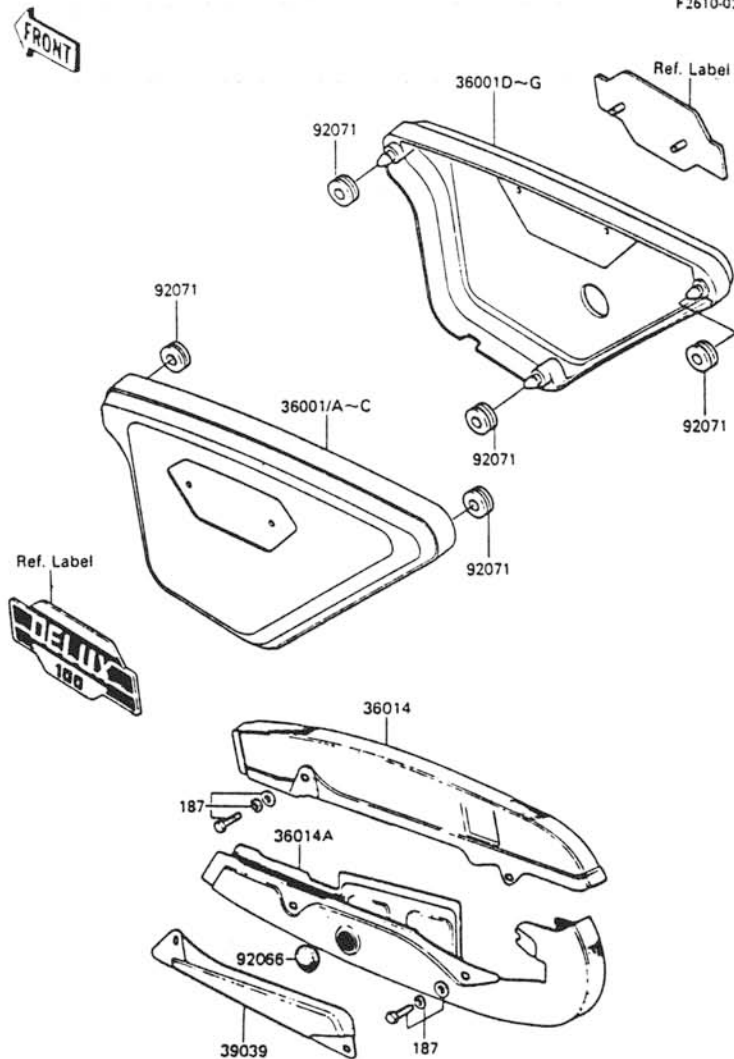
This catalog covers:
'87 KH100-A7 Chassis

GRID NO.

E-8

This grid covers:
Side Cover/Chain Case

F2610-0220



Ref. No.	Part No.	Description	Spec Code	Quantity- KH100	
				'87	A7
36001	36001-038-B1	COVER-SIDE,LH,F,RED		1	
36001A	36001-038-M4	COVER-SIDE,LH,L,P,BLUE		1	
36001B	36001-038-R1	COVER-SIDE,LH,P,A,WHITE		1	
36001C	36001-038-T8	COVER-SIDE,LH,P,G,GRAY		1	
36001D	36007-033-B1	COVER-SIDE,RH,F,RED		1	
36001E	36007-033-M4	COVER-SIDE,RH,L,P,BLUE		1	
36001F	36007-033-R1	COVER-SIDE,RH,P,A,WHITE		1	
36001G	36007-033-T8	COVER-SIDE,RH,P,G,GRAY		1	
36014	36013-014	CASE-CHAIN		1	
36014A	36015-011	CASE-CHAIN,LWR		1	
39039	36026-003	COVER-CHAIN CASE		1	
92066	92074-004	PLUG,CHAIN CASE,34X1		1	
92071	92071-056	GROMMET		6	
187	18780610	BOLT-UPSET-WSP		5	

This catalog covers:
 '87 KH100-A7 Chassis

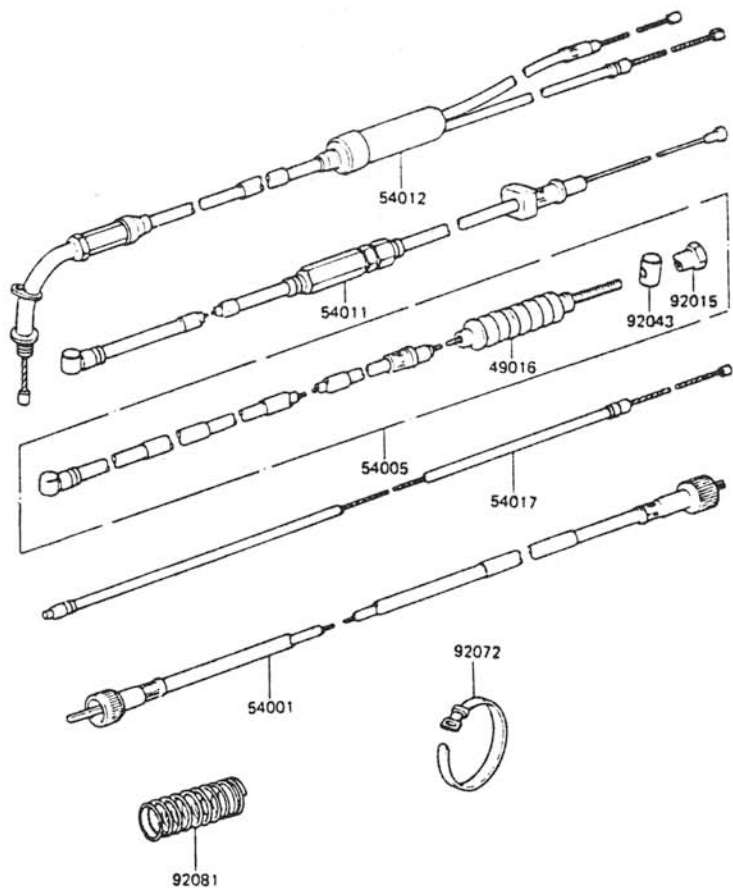
GRID NO.

E-7

This grid covers:

Cable

F2540-0059



Ref. No.	Part No.	Description	Spec Code	Quantity- KH100	
				'87	A7
49016	54009-008	COVER-SEAL		1	
54001	54001-1007	CABLE-SPEEDOMETER		1	
54005	54005-1001	CABLE-BRAKE,FR		1	
54011	54011-1127	CABLE-CLUTCH		1	
54012	54012-1148	CABLE-THROTTLE		1	
54017	54017-1009	CABLE-STARTER		1	
92015	92015-052	NUT,CABLE ADJUSTER LOCK		1	
92043	92043-082	PIN,BRAKE CABLE		1	
92072	92072-030	BAND,L=123		1	
92081	54025-004	SPRING,CABLE SUPPORTER		1	

This catalog covers:
 '87 KH100-A7 Chassis

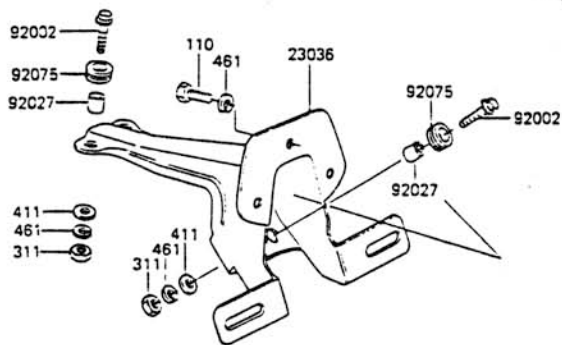
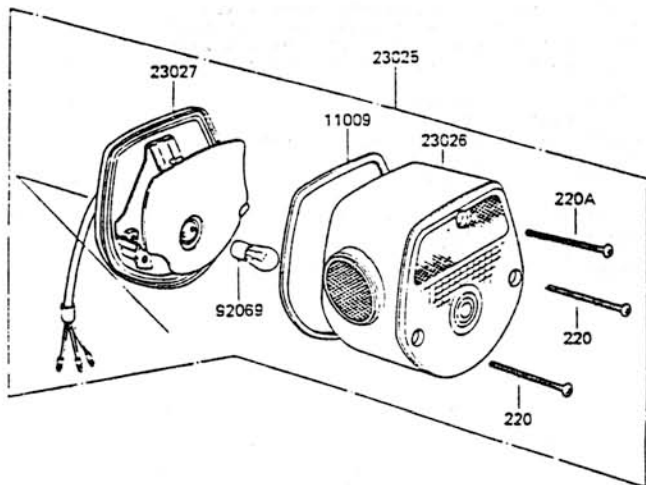
GRID NO.

E-10

This grid covers:
 Tail Lamp

F2720-0059

FRONT



Ref. No.	Part No.	Description	Spec Code	Quantity- KH100			
				'87			
				A7			
11009	23028-019	GASKET, TAIL LAMP LENS					1
23025	23025-055	LAMP-TAIL, "040-5220" MARK					1
23026	23026-028	LENS, TAIL LAMP, w/REFLECTOR					1
23027	23027-1018	BODY-COMP-TAIL LAMP					1
23036	23036-030	BRACKET-TAIL LAMP					1
92002	92002-1262	BOLT, 6X22					4
92027	92027-129	COLLAR, 6, 8X10X8, 5					4
92069	92069-028	BULB, 6V 17/5, 3W					1
92075	92075-076	DAMPER					4
110	11080614	BOLT, 6X14					3
220	22080450	SCREW-PAN-CROS					2
220A	22080455	SCREW-PAN-CROS					1
311	31180600	NUT-HEX, 6MM					4
411	41180600	WASHER-PLAIN, 6MM					4
461	461F0600	WASHER-SPRING, 6MM					7

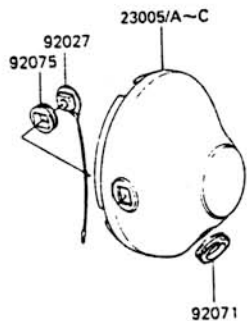
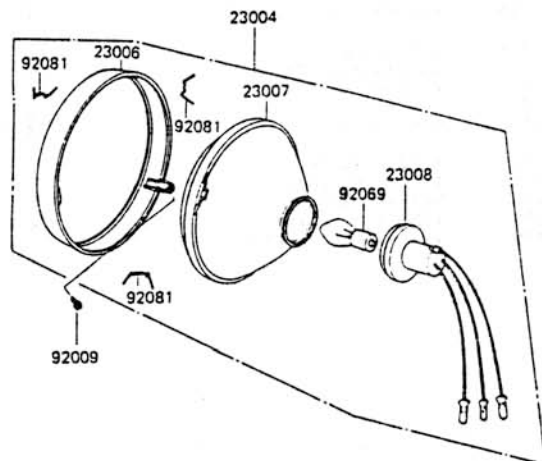
This catalog covers:
 '87 KH100-A7 Chassis

GRID NO.

E-9

This grid covers:
 Head Lamp

F2710-0200



Ref. No.	Part No.	Description	Spec Code	Quantity- KH100	
				'87	A7
23004	23004-045	LAMP-HEAD		1	
23005	23005-041-B1	BODY-COMP-HEAD LAMP,F,RED		1	
23005A	23005-041-M4	BODY-COMP-HEAD LAMP,L,P.BLUE		1	
23005B	23005-041-R1	BODY-COMP-HEAD LAMP,P,A.WHITE		1	
23005C	23005-041-T8	BODY-COMP-HEAD LAMP,P,G.GRAY		1	
23006	23006-037	RIM-LAMP		1	
23007	23007-048	LENS-COMP		1	
23008	23008-039	SOCKET-ASSY,HEAD LAMP		1	
92009	23019-025	SCREW,PAN HEAD,5X14		1	
92027	23076-002	COLLAR		2	
92069	92069-064	BULB,6V 25/25W		1	
92071	23023-011	GROMMET		1	
92075	23066-010	DAMPER		2	
92081	23009-014	SPRING,HEAD LAMP LENS		3	

This catalog covers:
 '87 KH100-A7 Chassis

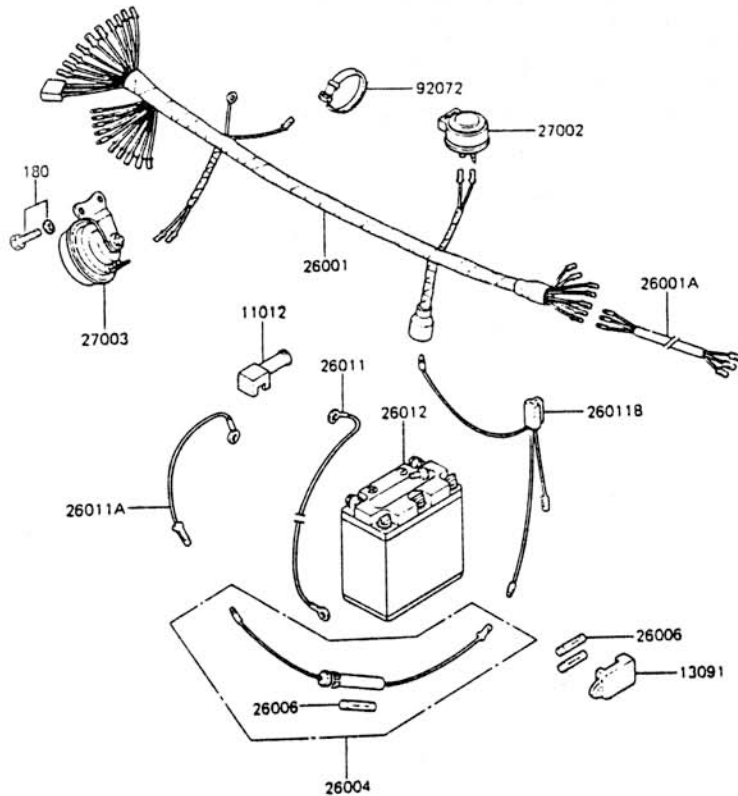
GRID NO.

E-12

This grid covers:
 Electrical Equipment

F2760-0264

FRONT



Ref. No.	Part No.	Description	Spec Code	Quantity- KH100		
				'87		
11012	92073-019	CAP,BATTERY			1	
13091	26016-004	HOLDER,SPARE FUSE			1	
26001	26001-1875	HARNESS,MAIN			1	
26001A	26002-041	HARNESS,RR			1	
26004	26004-017	FUSE-ASSY			1	
26006	26006-003	FUSE,10A,L=25			4	
26011	26010-023	WIRE-LEAD,GROUND			1	
26011A	26010-031	WIRE-LEAD,BATTERY			1	
26011B	26011-1025	WIRE-LEAD,RECTIFIER			1	
26012	26012-029	BATTERY,6V 6AH			1	
27002	27002-013	RELAY-ASSY,TURN SIGNAL			1	
27003	27003-1003	HORN			1	
92072	92072-030	BAND,L=123			3	
180	180B0612	BOLT-UPSET-WS,6X12			2	

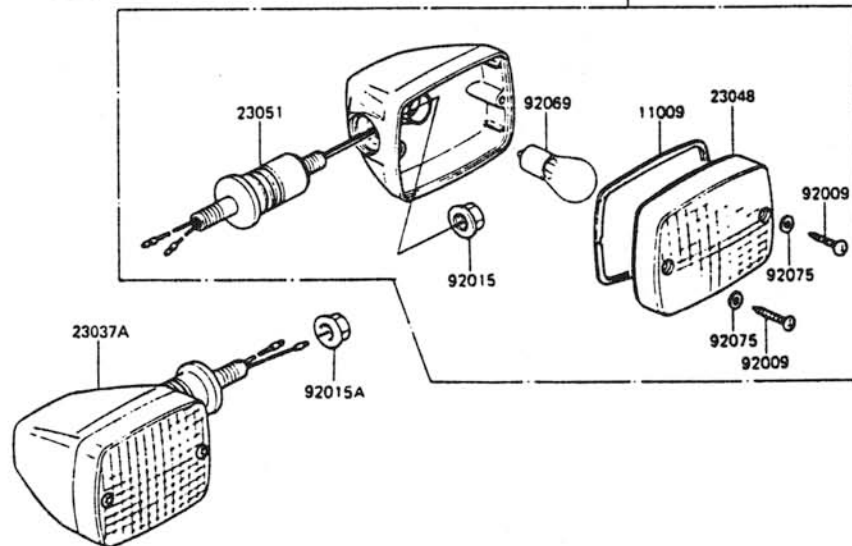
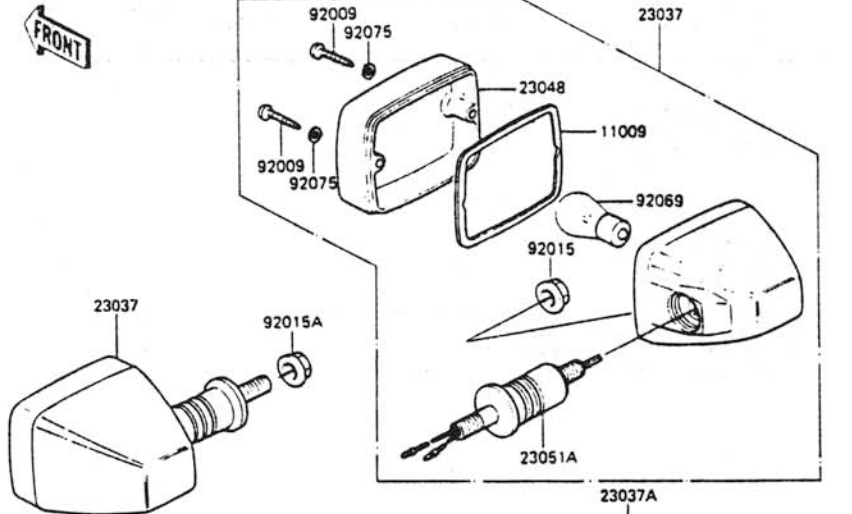
This catalog covers:
 '87 KH100-A7 Chassis

GRID NO.

E-11

This grid covers:
 Turn Signal

F2730-0040



Ref. No.	Part No.	Description	Spec Code	Quantity- KH100		
				'87		
11009	11009-1150	GASKET, SIGNAL LAMP		4		
23037	23037-1246	LAMP-ASSY-SIGNAL, FR		2		
23037A	23037-1247	LAMP-ASSY-SIGNAL, RR		2		
23048	23048-1019	LENS-SIGNAL LAMP, "7460"		4		
23051	23051-1026	BRACKET-SIGNAL LAMP		2		
23051A	23051-1030	BRACKET-SIGNAL LAMP		2		
92009	92009-1069	SCREW, TAPPING, 4X25		8		
92015	92015-1072	NUT, 10MM		4		
92015A	92015-1428	NUT, FLANGED, 10MM		4		
92069	92069-056	BULB, 6V 21CP		4		
92075	23058-002	WASHER, PLAIN, 4MM		8		

This catalog covers:
 '87 KH100-A7 Chassis

GRID NO.

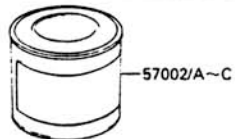
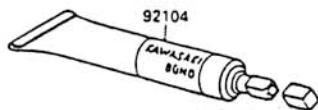
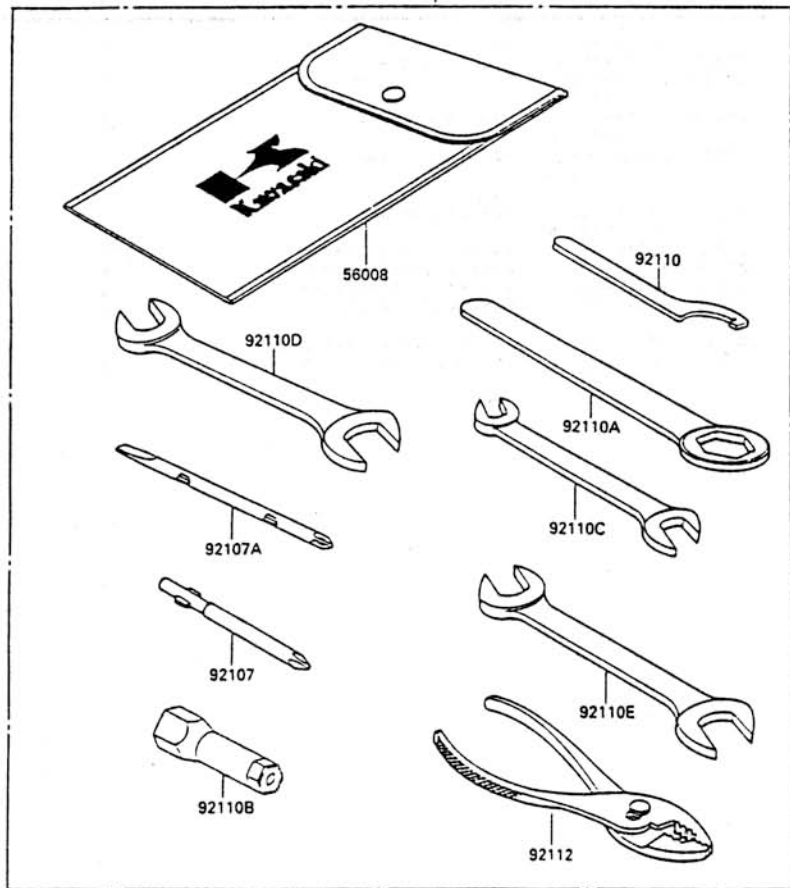
E-14

This grid covers:

Tool

56007

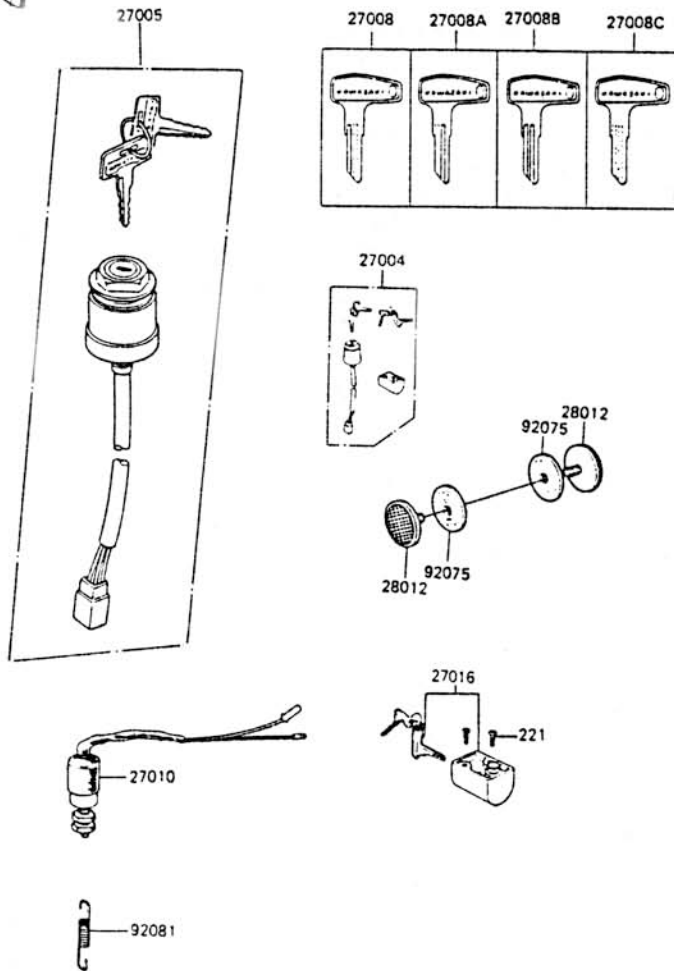
F2810-0123



Ref. No.	Part No.	Description	Spec Code	Quantity- KH100	
				'87	A7
56007	56007-1105	TOOLKIT		1	
56008	56008-1019	BAG, TOOL		1	
57002	56019-108-B1	PAINT, 1/12L, F. RED		1	
57002A	56019-108-M4	PAINT, 1/12L, L. P. BLUE		1	
57002B	56019-108-R1	PAINT, 1/12L, P. A. WHITE		1	
57002C	56019-108-T8	PAINT, 1/12L, P. G. GRAY		1	
92104	92104-002	GASKET-LIQUID, TUBE, 100G, SILVER		1	
92107	92107-005	TOOL-DRIVER, #3PHILLIPS		1	
92107A	92107-1051	TOOL-DRIVER, #2PHILLIPS&SLOT		1	
92110	92110-1009	TOOL-WRENCH, HOOK		1	
92110A	92110-1024	TOOL-WRENCH, BOX END, 22MM		1	
92110B	92110-1113	TOOL-WRENCH, BOX, 21MM		1	
92110C	92126-001	TOOL-WRENCH, OPEN END, 8X10		1	
92110D	92126-002	TOOL-WRENCH, OPEN END, 12X13		1	
92110E	92126-003	TOOL-WRENCH, OPEN END, 14X17		2	
92112	92112-003	TOOL-PLIERS		1	

FRONT

F2770-0065



Ref. No.	Part No.	Description	Spec Code	Quantity- KH100			
				'87			
				A7			
27004	27004-5272	SWITCH-ASSY					1
27005	27005-1044	SWITCH-ASSY-IGNITION					1
27008	27008-1030	KEY-LOCK,BLANK (OPTION)					1
27008A	27008-1031	KEY-LOCK,BLANK (OPTION)					1
27008B	27008-1032	KEY-LOCK,BLANK (OPTION)					1
27008C	27008-1033	KEY-LOCK,BLANK (OPTION)					1
27010	27010-015	SWITCH,BRAKE LAMP					1
27016	27016-5041	LOCK-ASSY,STEERING					1
28012	28012-009	REFLECTOR-REFLEX,RR					2
92075	92094-011	DAMPER,REFLECTOR					2
92081	27011-015	SPRING,BRAKE LAMP SWITCH					1
221	22180610	SCREW-CSK-CROS,6X10					2

This catalog covers:
 '87 KH100-A7

GRID NO. **L-14** This grid covers:
 Numerical Parts Index

Part No.	Grid No.	Part No.	Grid No.	Part No.	Grid No.	Part No.	Grid No.	Part No.	Grid No.	Part No.	Grid No.
11080614.....	E-10	13089-005.....	B-8	153N0835.....	D-13	18080612.....	E-4	22080635.....	B-13	26010-031.....	E-12
11080620.....	B-11	13091-003.....	B-8	16001-170.....	B-14	18080612.....	E-12	22080640.....	B-12	26011-1025.....	E-12
110C0625.....	D-13	13091-1025.....	B-4	16002-002.....	B-14	18070635.....	B-5	22080640.....	B-13	26012-029.....	E-12
110G0630.....	D-10	13091-1077.....	B-10	16002-007.....	B-14	18001-126.....	B-5	22080645.....	B-13	26016-004.....	E-12
110G0630.....	D-11	13091-1110.....	D-13	16002-012.....	C-4	18033-067.....	B-5	22080650.....	B-13	27002-013.....	E-12
11001-1101.....	B-3	13091-1350.....	B-11	16003-004.....	B-14	18043-012.....	B-5	22080660.....	B-12	27003-1003.....	E-12
11004-033.....	B-3	13095-022.....	B-8	16004-010.....	B-14	18044-014.....	B-5	22080665.....	B-12	27004-5272.....	E-13
11005-1027.....	B-3	13102-1016.....	B-8	16005-005.....	B-14	18049-083.....	B-5	22080675.....	B-13	27005-1044.....	E-13
11009-031.....	B-3	13113-003.....	B-8	16006-013.....	B-14	18061-040.....	B-5	22180610.....	E-13	27008-1030.....	E-13
11009-1013.....	E-3	13118-1001.....	B-8	16007-020.....	B-14	18069-004.....	B-5	22180614.....	C-5	27008-1031.....	E-13
11009-1136.....	B-13	13121-036.....	B-8	16008-010.....	B-14	18380612.....	D-7	22180616.....	B-12	27008-1032.....	E-13
11009-1150.....	E-11	13127-1017.....	B-9	16009-059.....	B-14	18380616.....	D-6	22180620.....	B-7	27008-1033.....	E-13
11009-1199.....	B-5	13128-021.....	B-9	16010-004.....	B-14	18580616.....	B-5	221C0306.....	F-3	27010-015.....	E-13
11009-1298.....	C-4	13129-010.....	B-9	16012-004.....	B-14	18580616.....	E-6	22380610.....	B-5	27010-1035.....	D-13
11009-1567.....	E-3	13129-1138.....	B-9	16013-003.....	B-14	18580825.....	D-7	22380612.....	B-13	27011-015.....	E-13
11010-062-10.....	B-4	13129-1139.....	B-9	16014-002.....	B-14	18680620.....	D-7	23004-045.....	E-9	27016-5041.....	E-13
11012-1045.....	B-4	13129-1146.....	B-9	16015-001.....	B-14	18780610.....	E-8	23005-041-B1.....	E-9	28012-009.....	E-13
11013-1012.....	B-4	13129-1148.....	B-9	16016-002.....	B-14	18780612.....	B-4	23005-041-M4.....	E-9	291H0616.....	B-8
112G0516.....	B-8	13129-1149.....	B-9	16017-068.....	B-14	18780612.....	D-4	23005-041-R1.....	E-9	31180600.....	C-3
11381028.....	D-6	13129-1642.....	B-9	16019-021.....	B-14	18780614.....	D-7	23005-041-T8.....	E-9	31180600.....	D-5
11580816.....	B-5	13129-1708.....	B-9	16021-003.....	B-14	18780616.....	D-4	23006-037.....	E-9	31180600.....	D-7
120Q0630.....	B-10	13140-1026.....	B-10	16022-005.....	C-3	21003-1050.....	C-5	23007-048.....	E-9	31180600.....	E-10
12002-030.....	B-6	13140-1027.....	B-10	16024-006.....	B-14	21007-1003.....	B-10	23008-039.....	E-9	31280600.....	B-8
13001-1065.....	B-6	13140-1028.....	B-10	16025-057.....	B-14	21008-006.....	C-5	23008-1115.....	E-6	31481000.....	B-6
13002-003.....	B-6	13142-014.....	B-10	16029-002.....	B-14	21013-006.....	C-5	23009-014.....	E-9	31481000.....	D-5
13008-5043.....	B-6	13144-066.....	B-9	16030-001.....	B-14	21017-002.....	C-4	23019-025.....	E-9	31481000.....	D-12
13024-5021.....	B-6	13146-002.....	B-10	16031-015.....	B-14	21017-002.....	C-5	23023-011.....	E-9	31581000.....	D-6
13025-5021.....	B-6	13151-1001.....	B-10	16032-003.....	B-14	21029-031.....	C-5	23025-055.....	E-10	31780800.....	B-5
13027-1035.....	B-6	13157-004.....	B-11	16033-012.....	B-14	21047-1018.....	C-5	23026-028.....	E-10	31780800.....	D-11
13029-1036.....	B-6	13161-1026.....	B-11	16034-001.....	B-14	21049-1012.....	C-5	23027-1018.....	E-10	32081200.....	D-10
13033-030.....	B-6	13168-1046.....	B-11	16077-008.....	B-14	21050-1025.....	C-5	23028-019.....	E-10	32002-1968.....	D-3
13034-034.....	B-6	13209-014.....	B-10	16082-067.....	C-4	21061-1003.....	C-5	23036-030.....	E-10	32099-012.....	D-4
13035-025.....	B-6	13231-1008.....	B-8	16085-004.....	C-4	21121-1105.....	C-6	23037-1246.....	E-11	32103-025.....	D-4
13036-043.....	B-6	13239-1034.....	B-10	16086-001.....	C-4	21130-009.....	C-6	23037-1247.....	E-11	32109-014.....	D-4
13037-1135.....	B-6	13242-1007.....	B-11	16088-002.....	C-4	22080410.....	E-6	23048-1019.....	E-11	32115-004.....	E-4
13037-1136.....	B-6	13246-001.....	B-8	16090-002.....	C-4	22080450.....	E-10	23051-1026.....	E-11	33001-051.....	D-5
13044-5015.....	B-6	14002-1072.....	B-12	16090-004.....	C-4	22080455.....	E-10	23051-1030.....	E-11	33032-039.....	D-5
13063-002.....	B-7	14002-1205.....	B-12	16091-001.....	C-4	22080514.....	C-4	23058-002.....	E-11	33040-1006.....	D-5
13064-1042.....	B-7	14014-008.....	B-12	16093-006.....	C-4	22080522.....	D-13	23066-010.....	E-9	33040-1011.....	D-5
13066-1024.....	B-7	14014-017.....	B-12	16094-002.....	C-4	22080528.....	C-4	23076-002.....	E-9	34002-033.....	D-6
13068-007.....	B-7	14019-056.....	B-13	16096-012.....	C-4	22080535.....	D-13	25001-1248.....	E-6	34011-1028.....	D-8
13069-005.....	B-7	14025-1510.....	B-13	16115-018.....	B-13	22080540.....	D-13	25005-1138.....	E-6	34019-1001.....	D-8
13070-1130.....	B-7	14025-1870.....	E-6	16116-006.....	B-13	22080612.....	B-12	25008-1041.....	E-6	34024-056.....	D-6
13072-003.....	B-7	14026-1023.....	B-13	16128-009.....	C-4	22080612.....	B-13	25023-1035.....	E-6	34025-008.....	D-6
13073-004.....	B-7	14030-1007.....	B-13	16134-021.....	C-4	22080616.....	B-8	25023-1036.....	E-6	34025-008.....	D-8
13075-004.....	B-7	14031-1069.....	B-13	16136-007.....	B-13	22080616.....	B-10	26001-1875.....	E-12	34028-009.....	D-5
13081-028.....	B-8	14032-1218.....	B-13	16147-001.....	B-14	22080620.....	B-12	26002-041.....	E-12	35001-1128-B1.....	D-7
13086-1002.....	B-8	14039-001.....	B-13	16281028.....	E-5	22080620.....	B-13	26004-017.....	E-12	35001-1128-M4.....	D-7
13087-1011.....	B-8	14046-006.....	B-13	16281032.....	E-5	22080625.....	B-12	26006-003.....	E-12	35001-1128-R1.....	D-7
13088-006.....	B-8	14076-005.....	B-13	172G08115.....	B-12	22080630.....	B-13	26010-023.....	E-12	35001-1128-T8.....	D-7

This catalog covers:
'87 KH100-A7 Chassis

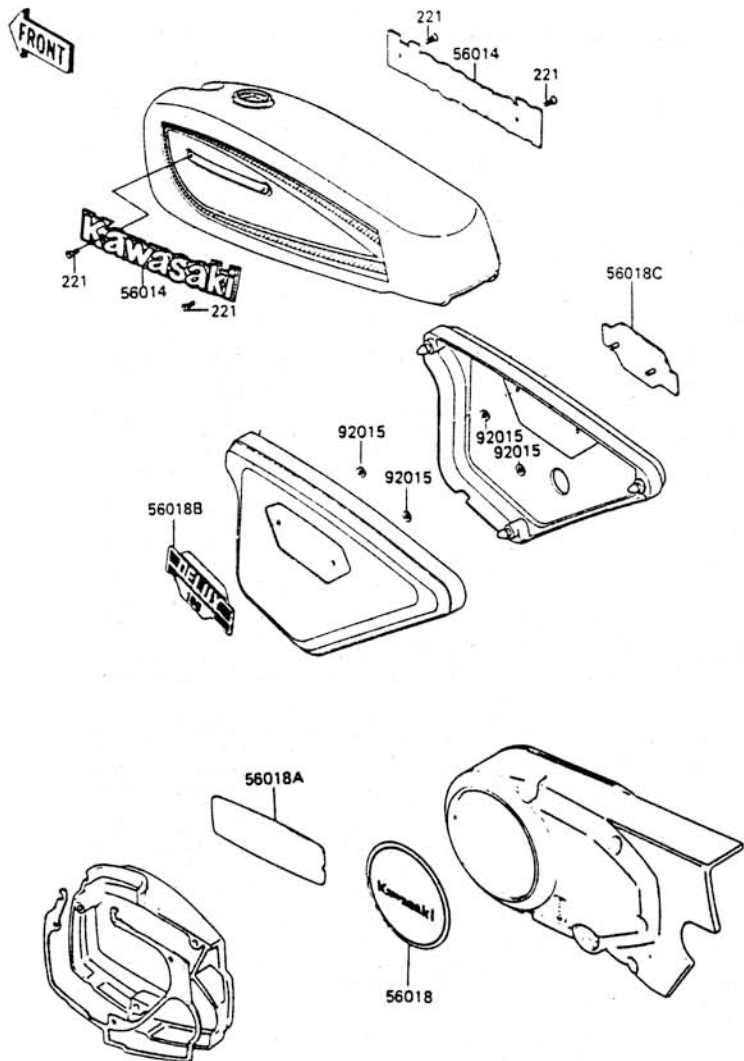
GRID NO

F-3

This grid covers:

Label

F2860-0219



Ref. No.	Part No.	Description	Spec Code	Quantity - KH100-		
				'87		
56014	56014-1062	EMBLEM, FUEL TANK, "KAWASAKI"		4		
56018	56018-1250	MARK, GENERATOR COVER		2		
56018A	56018-1251	MARK, CARBURETOR COVER		2		
56018B	56018-1737	MARK, SIDE COVER, LH		2		
56018C	56018-1738	MARK, SIDE COVER, RH		2		
92015	92018-005	NUT, PUSH, 3MM		8		
221	221C0306	SCREW-CSK-CROS		8		

This catalog covers:
'87 KH100-A7

GRID NO.

L-15

This grid covers:
Numerical Parts Index

Part No.	Grid No.	Part No.	Grid No.	Part No.	Grid No.	Part No.	Grid No.	Part No.	Grid No.	Part No.	Grid No.
35011-1016.....	B-4	41062-005.....	D-10	44033-1179-M4.....	D-14	52001-035.....	E-4	702A05300.....	E-3	92024-030.....	B-9
35022-084.....	D-7	41063-001.....	D-10	44033-1179-R1.....	D-14	52003-020.....	E-4	92001-012.....	B-11	92025-047.....	B-6
35022-1235-B1.....	D-7	41064-009.....	D-10	44033-1179-T8.....	D-14	52015-002.....	E-4	92001-021.....	D-11	92027-1017.....	D-5
35022-1235-M4.....	D-7	41068-026.....	D-10	44037-079.....	D-14	53002-047.....	E-5	92001-1111.....	B-4	92027-121.....	B-11
35022-1235-R1.....	D-7	41068-1109.....	D-11	44039-054.....	D-14	53029-047.....	E-5	92001-121.....	B-13	92027-122.....	D-7
35022-1235-T8.....	D-7	41069-005.....	D-10	44041-007.....	D-14	54001-1007.....	E-7	92001-1245.....	D-4	92027-1245.....	B-6
36001-038-B1.....	E-8	41072-007.....	D-10	44041-052.....	D-14	54005-1001.....	E-7	92001-1368.....	B-9	92027-129.....	E-10
36001-038-M4.....	E-8	41072-007.....	D-11	44041-088.....	D-14	54009-008.....	E-7	92001-1401.....	B-11	92027-1595.....	B-9
36001-038-R1.....	E-8	41082-001.....	D-10	44043-016.....	D-14	54011-1127.....	E-7	92001-1426.....	B-12	92027-285.....	B-6
36001-038-T8.....	E-8	41085-003.....	D-10	44043-017.....	D-14	54012-1148.....	E-7	92001-1432.....	D-14	92028-025.....	B-12
36007-033-B1.....	E-8	41085-003.....	D-11	44045-044.....	D-14	54017-1009.....	E-7	92001-1704.....	D-13	92028-069.....	B-12
36007-033-M4.....	E-8	41180600.....	D-7	44046-002.....	D-14	54025-004.....	E-7	92001-182.....	B-11	92030-012.....	B-9
36007-033-R1.....	E-8	41180600.....	E-10	44065-1015.....	D-14	55001210.....	C-3	92002-1262.....	E-10	92033-014.....	B-9
36007-033-T8.....	E-8	41181000.....	D-5	45014-127-B1.....	D-5	55002015.....	D-5	92002-1438.....	B-7	92033-1003.....	D-14
36013-014.....	E-8	41181200.....	D-5	45014-127-M4.....	D-5	55002015.....	D-12	92003-003.....	D-12	92036-003.....	B-6
36015-011.....	E-8	42006-067-80.....	D-11	45014-127-R1.....	D-5	55003025.....	D-8	92003-017.....	D-12	92036-018.....	B-14
36026-003.....	E-8	42010-005.....	D-11	45014-127-T8.....	D-5	55003025.....	D-10	92009-1069.....	E-11	92036-022.....	C-4
41080500.....	D-12	42014-016.....	D-11	45017-012.....	D-5	55003030.....	D-12	92009-1134.....	D-13	92037-010.....	E-3
41080600.....	B-4	42032-002.....	D-11	46003-1109.....	D-13	554A0800.....	D-12	92009-1150.....	D-13	92037-010.....	E-4
41080600.....	B-8	42033-1026.....	D-11	46012-004.....	D-13	56001-1229.....	D-13	92009-1266.....	B-11	92037-068.....	B-4
41080600.....	B-10	42036-002.....	D-11	46019-1011.....	D-13	56001-1230.....	D-13	92015-006.....	B-6	92037-146.....	E-4
41080800.....	B-5	42037-003.....	D-11	46075-1004.....	D-13	56007-1105.....	E-14	92015-042.....	D-12	92038-003.....	B-6
410F0600.....	D-13	42041-048.....	D-11	46076-1031.....	D-13	56008-1019.....	E-14	92015-052.....	E-7	92042-017.....	B-13
41002-1030.....	D-9	42045-004.....	D-11	46076-1032.....	D-13	56014-1062.....	F-3	92015-1022.....	B-3	92042-042.....	B-10
41019-040.....	D-9	42045-005.....	D-11	46091-1252.....	D-13	56018-1250.....	F-3	92015-1072.....	E-11	92042-043.....	B-8
41022-017.....	D-9	43001-048.....	D-12	46091-1308.....	D-13	56018-1251.....	F-3	92015-1193.....	C-6	92043-013.....	B-7
41022-032.....	D-9	43005-030.....	D-12	46092-1036.....	D-13	56018-1737.....	F-3	92015-1197.....	D-13	92043-039.....	D-12
41023-001.....	D-9	43007-035.....	D-12	46092-1037.....	D-13	56018-1738.....	F-3	92015-1221.....	D-13	92043-079.....	D-5
41025-1165.....	D-9	43010-5003.....	D-12	46094-011-21.....	D-13	56019-108-B1.....	E-14	92015-1428.....	D-4	92043-082.....	E-7
41025-1166.....	D-9	43012-001.....	D-12	46098-004.....	D-3	56019-108-M4.....	E-14	92015-1428.....	E-11	92043-1322.....	B-12
41027-056.....	D-9	44001-1678-B1.....	D-14	461E1000.....	B-6	56019-108-R1.....	E-14	92017-014.....	E-6	92045-1032.....	B-12
41028-056.....	D-9	44001-1678-M4.....	D-14	461F0600.....	D-7	56019-108-T8.....	E-14	92018-005.....	F-3	92047-013.....	D-14
41029-1173.....	D-9	44001-1678-R1.....	D-14	461F0600.....	E-10	59031-1005.....	C-5	92020-014.....	D-5	92047-014.....	D-3
41030-1113.....	D-9	44001-1678-T8.....	D-14	461F0800.....	B-5	600A0600.....	D-3	92022-037.....	C-4	92048-009.....	D-3
41032-024.....	D-9	44005-1077.....	D-14	461F1000.....	D-5	600A0700.....	B-9	92022-053.....	B-9	92049-004.....	B-12
41034-025-80.....	D-10	44006-1076.....	D-14	461F1000.....	D-12	600A1300.....	B-11	92022-054.....	B-8	92049-1076.....	D-14
41034-1039.....	D-11	44013-1071.....	D-14	461F1200.....	D-5	60186004.....	B-10	92022-057.....	B-8	92049-1240.....	B-12
41035-072.....	D-10	44026-1121.....	D-14	480J1600.....	B-9	60186004.....	B-12	92022-077.....	B-13	92049-1249.....	B-13
41039-005.....	D-10	44028-1006.....	D-14	482K9000.....	C-4	60186005.....	B-12	92022-077.....	C-4	92049-1250.....	B-13
41042-006.....	D-10	44028-1007.....	D-14	49006-1032.....	B-13	601862012.....	D-11	92022-085.....	D-12	92049-1294.....	C-4
41048-017.....	D-11	44033-1076-B1.....	D-14	510A3100.....	C-4	60186203.....	D-11	92022-115.....	B-9	92050-010.....	D-10
41048-1007.....	D-10	44033-1076-M4.....	D-14	510A3200.....	B-6	60186301.....	D-10	92022-116.....	D-5	92050-011.....	D-10
41049-002.....	D-10	44033-1076-R1.....	D-14	51002-5328-M4.....	E-3	601863012.....	D-10	92022-1265.....	D-14	92050-013.....	B-12
41049-002.....	D-11	44033-1076-T8.....	D-14	51002-5329-B1.....	E-3	601863012.....	D-11	92022-146.....	B-9	92050-071.....	B-6
41050-012.....	D-10	44033-1077.....	D-14	51002-5329-R1.....	E-3	610A0406.....	B-10	92022-1557.....	E-6	92051-003.....	B-13
41050-012.....	D-11	44033-1178-B1.....	D-14	51002-5329-T8.....	E-3	610A0410.....	B-6	92022-1568.....	D-5	92052-003.....	D-11
41053-002.....	D-11	44033-1178-M4.....	D-14	51023-1123.....	E-3	610A0512.....	B-12	92022-266.....	B-9	92055-004.....	D-10
41053-005.....	D-10	44033-1178-R1.....	D-14	51047-002.....	E-4	670B2010.....	E-3	92022-271.....	B-9	92055-004.....	D-11
41059-018.....	D-10	44033-1178-T8.....	D-14	51048-1004.....	E-3	670B2016.....	B-6	92022-324.....	B-11	92055-010.....	B-13
41060-014.....	D-10	44033-1179-B1.....	D-14	51059-006.....	E-3	670B3026.....	B-13	92024-003.....	B-6	92055-022.....	B-9

INDEX

MAIN TITLE	PAGE
CYLINDER HEAD/CYLINDER	1
AIR FILTER	2
MUFFLER	3
CRANKSHAFT/PISTON	4
KICKSTARTER MECHANISM	5
CLUTCH	6
TRANSMISSION	7
CHANGE DRUM/SHIFT FORK	8
GEAR CHANGE MECHANISM	9
CRANKCASE	10
ENGINE COVER	11
CARBURETOR	12
OIL PUMP	14
GENERATOR	15
IGNITION COIL	16
FRAME	17
FRAME FITTING	18
SWING ARM/SHOCK ABSORBER	19
STEP	20
FENDER	21
STAND	22
TIRE	23
FRONT HUB	24
REAR HUB	25
BRAKE PEDAL	26
HANDLEBAR	27
FRONT FORK	28
FUEL TANK	29
OIL TANK	30
SEAT	31
METER	32
CABLE	33
SIDE COVER/CHAIN CASE	34
HEAD LAMP	35
TAIL LAMP	36

MAIN TITLE	PAGE
TURN SIGNAL	37
ELECTRICAL EQUIPMENT	38
IGNITION SWITCH	39
TOOL	40
LABEL	41

This catalog covers:
 '87 KH100-A7 Chassis

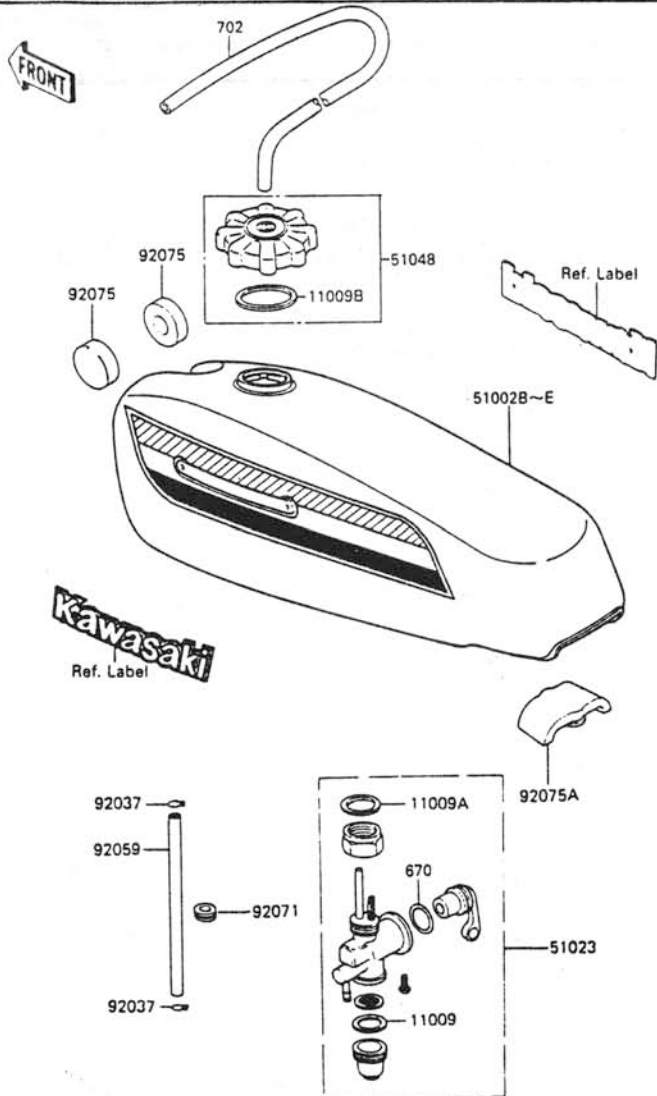
GRID NO.

E-3

This grid covers:

Fuel Tank

F2410-0191



Ref. No.	Part No.	Description	Spec Code	Quantity- KH100	
				'87	A7
11009	11009-1013	GASKET, FUEL TAP CUP		1	
11009A	11009-1567	GASKET, FUEL TAP JOINT		1	
11009B	51059-006	GASKET, FUEL TANK CAP		1	
51002B	51002-5328-M4	TANK-COMP-FUEL, L.P., BLUE		1	
51002C	51002-5329-B1	TANK-COMP-FUEL, F. RED		1	
51002D	51002-5329-R1	TANK-COMP-FUEL, P.A., WHITE		1	
51002E	51002-5329-T8	TANK-COMP-FUEL, P.G., GRAY		1	
51023	51023-1123	TAP-ASSY, FUEL		1	
51048	51048-1004	CAP-ASSY-TANK, FUEL		1	
92037	92037-010	CLAMP, TUBE		2	
92059	92059-088	TUBE, 4, 5X9X270		1	
92071	92071-038	GROMMET, PIPE		1	
92075	92075-101	DAMPER, FUEL TANK		2	
92075A	92075-173	DAMPER, TANK, RR		1	
670	670B2010	O RING, 10MM		1	
702	702A05300	TUBE-RUBBER, 5X300		1	